



LORD & BERRY

LORD & BERRY



Genny - Milan Fashion Week

PRODUCTS DATA SHEET

LORD & BERRY

Contents

1 BRAND PRESENTATION	p. 8
2 CONFIDENCE IN NO TIME	p. 10
3 FASHION & PR	p. 22
4 BLACK WARDROBE	p. 26
5 EYES	p. 31
6 LIPS	p. 63
7 COLORLESS	p. 75
8 FACE	p. 89
9 ACCESSORIES	p. 117
10 COLOR CHART	p. 123
11 LORD & BERRY ONLINE STORE AND MAKE TO ORDER	p. 134

LORD & BERRY



Eyes

EYE COLLECTION

mascara, brow, eye shadow, pencil/liner



Lips

LIP COLLECTION

lipstick, lip liner, lip gloss



Colorless

COLORLESS COLLECTION

treatment for lips, eyes and face.



Face

FACE COLLECTION

foundation, concealer, powder, blush, bronzer, luminizer



Accessories

ACCESSORIES COLLECTION

brush, sponge, sharpener, implement and bag



LORD & BERRY

Lord & Berry is a passionate, creative and inspiring brand with a contemporary approach to make up that goes beyond the boundaries of cosmetics.

Iconic Principles

There are six instantly recognized symbols of Lord & Berry's uncompromising quality, inventiveness and excellence:

MILAN

The world-nourished city by the beauty and fashion industry's finest artisans, designers and make up artists.

PRACTICAL PACKAGING

Contemporary yet practical packaging to create modern products as an extension of clothing.

BLACK AND WHITE

Our Communication is regularly distinguished by black and white: simply iconic and elegant.

FASHION

Legitimacy within the demanding fashion industry creates color collections and sponsored fashion shows.

EYES AND LIPS

Color is fashion. We began by creating distinguished products for eyes and lips of the highest quality raw materials.

CULTURE

In the noblest of terms we strives to carry the women through the daily and special events of their lives and status in society.



MILAN



PRACTICAL PACKAGING



BLACK & WHITE



Pucci - Milan Fashion Week

FASHION



Gemy - Milan Fashion Week

EYES AND LIPS



CULTURE

LORD & BERRY

Confidence In No Time

A LORD & BERRY
INTRODUCTION

This short preview is designed to provide you with some basic information on our hero products which will help you to have great conversations with your customers.

When you read this you will be able to:

- Provide customers with the 3 key facts about Lord & Berry
- Identify Lord & Berry's 10 top selling products
- Explain the key characteristics of each product

For further details please always refer to full PDS program, lordandberry.com or write to asklab@lordandberry.com

LORD & BERRY

What's special about Lord & Berry?

SOME CUSTOMERS MAY NOT HAVE HEARD OF LORD & BERRY SO HERE ARE SOME KEY FACTS ABOUT THE BRAND WHICH YOU CAN SHARE WITH THEM:

Lord & Berry is a boutique fashion house that has revolutionized make up into a fashion accessory. Lord & Berry is an international company that has been in business since 1992 and sells in 29 different countries. Lord & Berry are committed to constant research and innovation through the fashion industry and the company cradle is in Milan. Always active in fashion show backstages Lord & Berry products meet the criteria of the very demanding standards of the designers. Lord & Berry design products to inspire self-confidence in a woman's beauty. The brand provides new fashions for each season inspired by new fashion, design, art and culture.

THE 3 KEY THINGS YOU CAN TELL YOUR CUSTOMERS ABOUT THE LORD & BERRY BRAND IS THAT IT IS:

1. Seen as a fashion house rather than a cosmetics brand with strong links to the Milan fashion industry.
2. Recognized in the fashion industry as the lips and eyes make up specialists. Lips & Eyes are color, color is fashion.
3. The distinctive essential yet practical and contemporary packaging is a Lord & Berry icon - an extension of clothing style and the make up artist preference.

BLACK WARDROBE

is Lord & Berry's most sought after product line and is the widest range of beauty products in black in the industry. They describe as the 'little black dress' of cosmetics.

LORD & BERRY



Hero Products



1. TIMELESS Kissproof® Lipstick - **2. SMUDGEPROOF** Waterproof Eye Pencil - **3. PRODIGIOUS** False Lash & Super Volume Effect - **4. LUMINIZER** Highlighter Stick - **5. 20100 Maximatte** Crayon Lipstick - **6. MUST HAVE** Tinted Brow Mascara - **7. ABSOLUTE** Bright Satin Lipstick - **8. COLOR FIX** Eye Primer - **9. LIP OIL POTION** Advanced Fluid Lip Treatment - **10. ULTIMATE** Lip Liner

LORD & BERRY

Now that you have learned in detail about the key products, the tables below will help you to quickly compare and contrast the most important products in the range.

MASCARA

		Effect	Treats Lashes	Waterproof	Smudge Proof	Clump Free	Contact Lens Wearers	Ophthalmologist Tested	Long Lasting	False Lash Effect
MASCARE Treatment & Volume Mascara	A treatment mascara that provides volume, length and definition while helping to treat and strengthen the lashes.	Volume Length Define	✓				✓	✓		
BACK IN BLACK Deep Black Mascara	Deep, black color with a small, precision wand that helps to add volume, definition and length.	Volume Length Define			✓	✓		✓	✓	
ALCHIMIA High Definition Mascara	A 3-in-1 mascara that provides, spectacular volume, length and natural curl while treating the lashes.	Volume Length Curl	✓		✓	✓		✓	✓	
PRODIGIOUS False Lash & Super Volume Effect	A high-impact mascara that curls and adds volume to your eye lashes.	False lash effect super volume			✓	✓		✓	✓	✓
BOOST Treatment MasCare	A high-performance conditioning formula which improves extra length and thickness to your lashes keeping them stronger than ever.	Treatment Length Curl	✓		✓	✓		✓		

EYE LINER

		Formulated with Kajal Khol	Finish	Long Lasting	Waterline	Can be smudged	Waterproof	Blendable	Can be used as an eye shadow
COUTURE KOHL KAJAL Eye pencil	A smudgeable eye pencil that provides a matte finish and that can be used on the waterline.	✓	Matte	✓	✓	✓			
SILK KAJAL Kohl Eye Liner	A smudgeable eye liner that provides a semi-matte finish to use on the waterline. It is suitable for sensitive eyes.	✓	Semi-Matte	✓	✓	✓			

LORD & BERRY

		Formulated with Kajal Khol	Finish	Long Lasting	Waterline	Can be smudged	Waterproof	Blendable	Can be used as an eye shadow
POLISH Eye Pencil	A traditional eye pencil that combines the glossy finish of a liquid liner with the smudgeable benefits of an eye pencil		Glossy			✓		✓	✓
PAILLETTES Eye Pencil	A classic black eye pencil infused with glitter.		Glitter	✓				✓	
LUXURY LINER Eye Liner	A retractable pencil liner that can be blended on application and then dries quickly for a long lasting, water proof finish.			✓			✓	✓	
KAJAL STICK Intense Black Kajal	An intense-black Kajal eye liner in a cone stick shape that is long lasting and gentle enough to be used on the waterline.	✓			✓				
SMUDGE-PROOF Waterproof Eye Pencil	A long lasting, smudgeproof eye pencil that can also be used as an eye shadow.			✓			✓		✓
VELLUTO Eye Pencil and Shadow	An eye shadow in a pencil format that can be used either as a powdery liner, sheer wash of color or eye shadow base.		Powder					✓	✓
INKGLAM Eye Liner	A liquid liner with a firm tip applicator for precise application and a patent leather finish.		Shiny Patent	✓			✓		
PERFECTO Graphic Liner	A new quick and easy way to draw a super graphic line. It makes your make up last over 24 hours. New delivery sistem ferlter tip pen.		Matte	✓			✓		

LORD & BERRY

		Formulated with Kajal Khol	Finish	Long Lasting	Waterline	Waterproof	Blendable	Can be used as an eye shadow	Quick Dry
SHODŌ Stylographic Eye Liner	The perfect tool for creating precise thick and super-fine lines thanks to his unique brush tip.		Semi-matte	✓					✓
LINE/SHADE Eye Pencil	The enhanced formula combines innovative technology with rich color pigments and glides onto eye for an ultra-fluid application.	✓	Matte		✓		✓		
LINE/SHADE GLAM Eye Pencil	LINE/SHADE Glam is formulated with a rich blend of vibrant pigments for a stunning metallic color payoff and smooth texture upon application.	✓	Shimmer		✓		✓		
MAGNIFICO Cream Pot Liner	Magnifico creates an extremely adherent and long wearing film that won't smudge or fade.		Matte	✓			✓		✓

LIPSTICK

		Finish	Waterproof	Active Ingredients	Long Lasting	Fashion Colors	Ultralight weight "breathing effect"	High comfort wear (non-drying)	Don't smudge
ABSOLUTE Bright Satin Lipstick	A high pigmented lipstick that delivers a vibrant bright satin finish.	Bright Satin		✓					✓
VOGUE Matte Lipstick	An extraordinary matte lipstick that provides an extreme comfort in application.	Matte		✓	✓	✓		✓	✓
TIMELESS Kissproof® Lipstick	A kissproof liquid lipstick that provides an ultra lightweight on an extremely thin cover.	Vibrant Matte	✓	✓			✓	✓	✓
20100 Shining Crayon Lipstick	A lipstick pencil that provides an intense shining colour.	Shining				✓			
JAMAIS! Sheer Lipstick	A lipstick that delivers a comfortable, buildable and mirror like finish.	Sheer		✓		✓		✓	✓

LORD & BERRY

		Finish	Waterproof	Active Ingredients	Long Lasting	Fashion Colors	Ultralight weight "breathing effect"	High comfort wear (non-drying)	Don't smudge
20100 Matte Crayon Lipstick	A lipstick pencil that provides an intense matte finish.	Matte		✓		✓		✓	
20100 MAXIMATTE Crayon Lipstick	A crayon lipstick that glides on lips with a matte sensorial finish with a release of soft and smooth color. An innovative matte texture that doesn't dry on lips.	Matte		✓	✓			✓	✓

HIGHLIGHTER

		Effect	Finish	All skintones	Blendable	Can be used as an eye shadow	Face highlighter	Water resistant	Wet & Dry
LUMINIZER Highlighter Stick	A satiny-gold highlighter to add a subtle glow, use it as a spot highlighter over make up.	Highlighter	Satin	✓	✓	✓	✓	✓	
STROBING Highlighter Pencil	A pink highlighter to add a subtle glow. Create a radiant, dewy complexion for an ethereal glow that is perfectly alluring on all skintones.	Highlighter	Shimmer	✓	✓	✓	✓	✓	
GLOW ON THE GO Highlighter Palette	Four shimmer finish highlighting powders. Shades can be applied wet or dry for a luminous flush and a subtle, natural radiance.	Highlighter	Glow	✓	✓	✓	✓	✓	✓

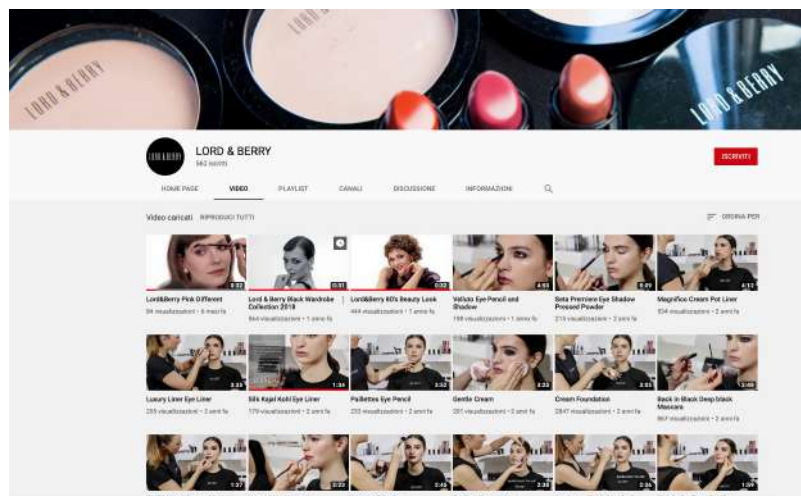
*all claims are supported by internal tests on products performance and by PRO make up artists.

Product Training

We support distributors, associates and partners with product training, brand acquaintance with our make up artist and product trainer networks.



LORD & BERRY YOUTUBE CHANNEL



Please contact asklab@lordandberry.com or your direct LAB representative for further information

DID YOU KNOW THAT...



All our products are cruelty free



All our products are Halal and Kosher



And, check the list of our vegan products...



Check the list of paraben free products!



All our wood pencils are sourced responsibly and are environmentally sustainable. We source our cedar from approved certified suppliers.

Paraben Free Products

- **SUPREME** EYE PENCIL
- **COUTURE KOHL KAJAL** EYE PENCIL
- **LINE/SHADE** EYE PENCIL
- **LINE/SHADE** Glam EYE PENCIL
- **STARDUST** EYE SHADOW LOOSE POWDER
- **GLITTER**
- **CREAM** GENTLE CREAM CLEANSER
- **2 PHASES** WATERPROOF MAKE UP REMOVER
- **1 FLUID DELICATE** MICELLAR WATER
- **PERFECTO** GRAPHIC LINER
- **MAGNIFICO** CREAM POT LINER
- **LUMINIZER** HIGHLIGHTER STICK
- **STROBING** HIGHLIGHTER PENCIL
- **GLOW ON THE GO** HIGHLIGHTER PALETTE
- **PRODIGIOUS** FALSE LASH & SUPER VOLUME EFFECT
- **BOOST** TREATMENT MasCare
- **ALCHIMIA** HIGH DEFINITION MASCARA
- **FLAWLESS** CREAMY CONCEALER
- **COLOR FIX EYE PRIMER** SMUDGEPROOF EYE SHADOW BASE
- **4 NIGHT & DAY** LASH & BROW GROWTH SERUM
- **3 SUBLIME** MOROCCAN ARGAN OIL
- **LIP OIL POTION** ADVANCED FLUID LIP TREATMENT
- **ONLY•ONE** MIXING BASE
- **MUST HAVE** BROW FIXER GEL / TINTED BROW MASCARA
- **20100 MAXIMATTE** CRAYON LIPSTICK
- **#REGLAM** CRAYON EYE SHADOW
- **TIMELESS** KISSPROOF® LIPSTICK
- **ABSOLUTE** BRIGHT SATIN LIPSTICK
- **SILHOUETTE** LIP LINER AND LIP TREATMENT
- **VOGUE** MATTE LIPSTICK
- **CREAM FOUNDATION** FLUID FOUNDATION
- **PERFECT SKIN** FOUNDATION STICK
- **SCULPT & CONTOUR** CREAM BRONZER
- **GRAN FINALE** SETTING LOOSE POWDER
- **ALL OVER** HIGHLIGHTING LOOSE POWDER

Vegan Products

- **COUTURE KOHL KAJAL** EYE PENCIL
- **LINE/SHADE Glam** EYE PENCIL
- **STARDUST** EYE SHADOW LOOSE POWDER
- **GLITTER**
- **SMUDGEPROOF** WATERPROOF EYE PENCIL #701 #703
- **2 PHASES** WATERPROOF MAKE UP REMOVER
- **1 FLUID DELICATE** MICELLAR WATER
- **LUXURY LINER** EYE LINER
- **MAGNIFICO** CREAM POT LINER
- **SHODŌ** STYLOGRAPHIC EYE LINER
- **INKGLAM** EYE LINER
- **KAJAL STICK** INTENSE BLACK KAJAL
- **SOFT TOUCH** FLUID CONCEALER
- **FLAWLESS** CREAMY CONCEALER
- **ULTIMATE TOUCH** ERASER PENCIL
- **COLOR FIX EYE PRIMER** SMUDGEPROOF EYE SHADOW BASE
- **4 NIGHT & DAY** LASH & BROW GROWTH SERUM
- **3 SUBLIME** MOROCCAN ARGAN OIL 100% PURE AND ORGAN
- **ACTIVE SPA** LIP BALM AND PRIMER
- **LIP OIL POTION** ADVANCED FLUID LIP TREATMENT
- **GLACÉE** EYE BROW GEL FIXER
- **MUST HAVE** TINTED BROW MASCARA
- **PERFECT BROW** PENCIL DEFINER
- **DIVA** EYE BROW WET & DRY POWDER
- **VELLUTO** EYE LINER AND SHADOW
- **#REGLAM** CRAYON EYE SHADOW
- **POLISH** EYE PENCIL
- **VOGUE** MATTE LIPSTICK
- **20100** MATTE CRAYON LIPSTICK
- **PRESSED POWDER**
- **BLUSH** POWDER BLUSHER
- **GRAN FINALE** SETTING LOOSE POWDER
- **LOOSE POWDER** FINISHING TOUCH
- **ALL OVER** HIGHLIGHTING LOOSE POWDER
- **CREAM FOUNDATION** FLUID FOUNDATION
- **CONCEAL-IT** STICK CONCEALER
- **BRONZER** POWDER BRONZER

GIVE IT A GO...

- **Look at the Lord & Berry range stocked in your store and get acquainted with all the products.**
- **Look at the full Lord & Berry range on lordandberry.com and compare it to the range you sell in your store.**
- Keep up to date with product launches, Brand news and customer reviews via:

www.lordandberry.com

Facebook: Lord & Berry

Twitter: lordandberrylab

Instagram: lordandberry_official

- For your online reference use:

#lordandberry
#lordberry
#blackwardrobe
#kissproof
#smudgeproof



Fashion &...



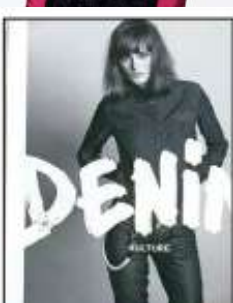
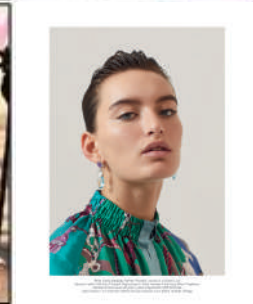
GENNY - MILAN FASHION WEEK AW19/20



REJINA PYO - LONDON FASHION WEEK AW19/20



...PR





lordandberry_official

LORD&BERRY OFFICIAL The Lips and Eyes Make-Up Specialist based in Milan
www.lordandberry.com



find us on     



BLACK WARDROBE COLLECTION

A timeless collection and make up wardrobe staple. It evolves and reinvents every year with a different mood covering a variety of expressions and impressions.

Lord & Berry's signature collection of make up classic black mascaras, black eyeliners, kajals and lipsticks is the piece to innovation. The set of diverse textures, formulations and shades of black works with every woman, on every mood, at every occasion, any time anywhere simply timeless.

BLACK WARDROBE **COLLECTION**

THE MAKE UP COLLECTION
FOR THE WOMAN OF TASTE

Lord & Berry presents the widest black beauty accessory collection in the industry. One product for every occasion and every situation from a business meeting to a glamour event. Lord & Berry most sought after product line, Black Wardrobe encompasses a top-of-the-line range of black make up products and accessories.



1. LUXURY LINER Eye Liner - 2. SILK KAJAL Kohl Eye Liner - 3. VELLUTO Eye Pencil And Shadow - 4. PERFECTO Graphic Liner - 5. #REGLAM Crayon Eye Shadow - 6. INKGLAM Eye Liner - 7. KAJAL STICK Intense Black Kajal - 8. PAILLETES Eye Pencil - 9. 20100 Maximatte Crayon Lipstick - 10. COUTURE KOHL KAJAL Eye Pencil - 11. SMUDGEPROOF Waterproof Eye Pencil - 12. POLISH Eye Pencil - 13. SHODŌ Stylographic Eye Liner - 14. LINE/SHADE Eye Pencil - 15. MAGNIFICO Cream Pot Liner - 16. SETA Eye Shadow Pressed Powder - 17. STARDUST Eye Shadow Loose Powder - 18. BACK IN BLACK Deep Black Mascara - 19. ALCHIMIA High Definition Mascara - 20. MASCARE Treatment & Volume Mascara - 21. PRODIGIOUS False Lash & Super Volume Effect - 22. BOOST Treatment MasCare



Pucci - Milan Fashion Week SS19

Eyes

CHARACTERISTICS:

Sensual and exotic, that's the effect that SILK KAJAL Kohl Eye Liner delivers. Just like the traditional Kohl, but with modern ease and control of a pencil. Giving a semi-matte finish that is also smudgeable, SILK KAJAL Kohl's soft tip is ophthalmologically-tested and gentle enough to be used on the inner eye. Also available in NUDO and WHITE.



UNIQUE QUALITIES:

- Kajal and kohl pigments, light vegetable oils
- Adapted to use on the inside of the eyelid
- Suitable for the most sensitive eyes, extremely comfortable

BENEFITS:

- Highlights the color of the iris and dramatises the eyes

HOW TO USE:

Apply along the inside of the eyelids. For an intense kohl look apply on inside lower lid and outside upper lid, with or without eye shadow. For a more discreet look apply using fine, precise lines. Blink eyes firmly after application to naturally smudge.

GOES WELL WITH:

Stardust Loose Eye Shadow in Black to create the original smokey eye look created by the fashion house Biba in the 70s, Velluto Eye Liner and Shadow Pencil, and Seta Shadow.

CUSTOMERS SHOULD KNOW:

Just like the traditional Kohl used by Ancient Egyptians with the modern ease and control of a matte black lacquered wooden pencil.

PRODUCT GROUP NUMBER: 1000

INGREDIENTS:

HYDROGENATED PALM OIL, HYDROGENATED COCO-GLYCERIDES, ETHYLHEXYL PALMITATE, MICA, CERA ALBA (BEESWAX), HYDROXYLATED LANOLIN, CERA MICROCRISTALLINA (MICROCRYSTALLINE WAX), PROPYLPARABEN, RETINYL PALMITATE, TOCOPHERYL ACETATE, MACADAMIA TERNIFOLIA (MACADAMIA) SEED OIL, PROPYLENE GLYCOL DICAPRYLATE/DICAPRATE, TOCOPHEROL, ASCORBYL PALMITATE, LECITHIN, GLYCERYL STEARATE, GLYCERYL OLEATE, CITRIC ACID, NYMPHAEA ALBA (WATER LILY) FLOWER EXTRACT, DEHYDROACETIC ACID, BHT, METHYLPARABEN, SORBICACID, SODIUM DEHYDROACETATE. [+/-MAY CONTAIN: IRON OXIDES (CI 77499), FERRIC FERROCYANIDE (CI 77510), IRON OXIDES (CI 77492), IRON OXIDES (CI 77491), TITANIUM DIOXIDE (CI 77891)].

LORD & BERRY

COUTURE KOHL KAJAL

EYE PENCIL

BLACK
WARDROBE
COLLECTION

CHARACTERISTICS:

Richly hued and deeply pigmented kajal liner smudges easily for an instant, powder soft finish. Skin friendly formula enhances and brightens the whites of the eyes with a smack down line of light reflecting pigment. The colour creates wildly vivid effects with this dramatically dark liner. Sketch liner inside and outside of your eyelids for a smouldering sexy look. Define and line your eyes with one stroke application ease. Color stays in place with this longwearing texture.



UNIQUE QUALITIES:

- Highly concentrated black pigments
- Perfectly adhering to eye area, long lasting

BENEFITS:

- Creates a warm defining glow to the eyes, matte finish
- Soft formula
- Provides ease in application
- Highly blendable

HOW TO USE:

Use small strokes to draw along the lash line and blend with Lord&Berry Precision Eye Shadow Brush #846 for a soft yet eye defining result.

GOES WELL WITH:

Warm tones of Stardust, Eye Brush #0846 Alchimia, Seta Eye Shadow.

CUSTOMERS SHOULD KNOW:

High and sophisticated definition to the eye. Not tested on animals.

PRODUCT GROUP NUMBER: 101

INGREDIENTS:

IRON OXIDES (CI 77499), SILICA, MICA, HYDROGENATED VEGETABLE OIL, OCTYLDODECANOL, HYDROGENATED PALM KERNEL GLYCERIDES, FERRIC AMMONIUM FERROCYANIDE (CI 77510), HYDROGENATED POLYISOBUTENE, RHUS SUCCEDANEA (JAPANESE) FRUIT WAX, ETHYLHEXYL PALMITATE, HYDROGENATED PALM GLYCERIDES, LECITHIN, GLYCERYL BEHENATE/EICOSADIOATE, TOCOPHEROL, ASCORBYL PALMITATE, CITRIC ACID.

LORD & BERRY

LUXURY LINER

EYE LINER

**BLACK
WARDROBE
COLLECTION**

CHARACTERISTICS:

A mechanical pencil-style liner with a built-in sharpener and a soft and creamy formula, with an intense, rich, color deposit. LUXURY LINER blends on application: dries quickly to a waterproof, non-smudge finish. Provides both thin precision and thick lines.



UNIQUE QUALITIES:

- Formula is ultra-resistant to water and humidity
- Seals 30 seconds after application
- Long lasting

BENEFITS:

- Practical and extremely easy to use
- Retractable tip and built in sharpener.
- Smoothly blends, let it settle before sealing

HOW TO USE:

Starting with a thin line in the inside corner, trace a line along the lash line of the upper eyelid, than thickens as it reaches the outside corner. Sharpen with built in sharpener.

GOES WELL WITH:

Mascare, Alchimia, Seta Eye Shadow. 2 Phases Waterproof Make Up Remover.

CUSTOMERS SHOULD KNOW:

Upon immediate application the formula is extremely smudgeable and soft. Excellent to create a smokey look that seals after 30 seconds.

PRODUCT GROUP NUMBER: 901

INGREDIENTS:

CYCLOPENTASILOXANE, TRIMETHYLSILOXYSILICATE, OZOKERITE, POLYETHYLENE, PHENYL TRIMETHICONE, EUPHORBIA CERIFERA (CANDELILLA) WAX, LECITHIN, RETINYL PALMITATE, TOCOPHERYL ACETATE, MACADAMIA TERNIFOLIA (MACADAMIA) SEED OIL, PROPYLENE GLYCOL DICAPRYLATE/DICAPRATE, TOCOPHEROL, ASCORBYL PALMITATE, NYMPHAEA ALBA (WATER LILY) FLOWER EXTRACT, CITRIC ACID, DEHYDROACETIC ACID, BHT, PROPYLPARABEN, METHYLPARABEN, SORBICACID, SODIUM DEHYDROACETATE.[+/-MAY CONTAIN:IRON OXIDES (CI 77499), FERRIC FERROCYANIDE (CI 77510)].

LORD & BERRY

POLISH

EYE PENCIL

BLACK
WARDROBE
COLLECTION

CHARACTERISTICS:

A high gloss eye pencil. As the most desirable of eye pencils, POLISH is a true indulgence: soft, smooth and sexy. Its glossy properties enable it to glide onto eyes, leaving a light-reflecting finish resembling a high-shine liquid eyeliner while maintaining the smudgeability and easy application of a pencil. Smudge it immediately for a soft focus look around the eye.



UNIQUE QUALITIES:

- The most wanted eye pencil
- High GLOSS formula provides astonishingly luminous finish
- Treats the eyes with LXB complex and Bee's Wax
- Extreme black color
- Delicate formula

BENEFITS:

- Glides on for a sensorial application
- Is both extremely light reflecting and eye defining
- Adapted for use on the inside of the eyelid

HOW TO USE:

This very soft eye pencil is recommended to be worn for an evening look. Apply this glossy finish pencil along the lash line. To obtain a more intense effect, it can also be applied on the inner eyelid like a kohl.

GOES WELL WITH:

Mascara and Alchimia, Seta Eye Shadow, Vogue Matte Lipstick, Absolute Bright Satin Lipstick.

CUSTOMERS SHOULD KNOW:

The only glossy eye pencil on the market.
Absolutely Fantastic.

PRODUCT GROUP NUMBER: 5071

INGREDIENTS:

DIISOSTEARYL MALATE, POLYBUTENE, POLYETHYLENE, POLYGLYCERYL-3 DIISOSTEARATE, TRIMETHYLOLPROPANE TRIISOSTEARATE, TRIETHYLHEXANOIN, PARAFFIN, OZOKERITE, VP/HEXADECENE COPOLYMER, LECITHIN, PROPYL PARABEN, RETINYL PALMITATE, TOCOPHERYL ACETATE, MACADAMIA TERNIFOLIA (MACADAMIA) SEED OIL, PROPYLENE GLYCOL DICAPRYLATE/DICAPRATE, TOCOPHEROL, ASCORBYL PALMITATE, CITRIC ACID, NYMPHAEA ALBA (WATER LILY) FLOWER EXTRACT, DEHYDROACETIC ACID, BHT, METHYL PARABEN, SORBIC ACID, SODIUM DEHYDROACETATE. [+/- MAY CONTAIN: IRON OXIDES (CI 77499), FERRIC FERROCYANIDE (CI 77510)].

LORD & BERRY

PAILLETTES

EYE PENCIL

BLACK
WARDROBE
COLLECTION

CHARACTERISTICS:

A creamy but weightless shimmery black eye pencil that features tiny flecks of glitter for a luminous and glamorous finish. Layer for extra sparkle or blend for a more subtle shine. Its surprisingly subtle finish brings an elegant twinkle to the eyes. PAILLETTES is NOT a kajal and should not be used inside the eye.



UNIQUE QUALITIES:

- Black pencil infused with Macro Paillettes
- Perfectly adhering to eye area, long lasting
- Blendable

BENEFITS:

- Creates a twinkling effect to the eyes
- Richly charged with pigments
- Soft Formula provides ease in application

HOW TO USE:

To bring an extra sparkle to your eye, apply along the lash line without smudging to maintain a strong contrast between the black base and the glitter.

GOES WELL WITH:

Stardust, Mascare, Alchimia.

CUSTOMERS SHOULD KNOW: Leaves a surprisingly elegant and sophisticated definition to the eye.

PRODUCT GROUP NUMBER: 5072

INGREDIENTS:

CAPRYLIC/CAPRIC/MYRISTIC/STEARIC TRIGLYCERIDE,
TRIETHYLHEXANOIN, POLYETHYLENE TEREPHTHALATE,
CERA ALBA (BEESWAX), RICINUS COMMUNIS (CASTOR)SEED
OIL, DIPENTAERYTHRITYL TETRAHYDROXYSTEARATE/
TETRAISOSTEARATE, OZOKERITE, COPERNICIA
CERIFERA(CARNAUBA) WAX, MICA, POLYMETHYL METHACRYLATE,
PROPYLPARABEN, LECITHIN, RETINYL PALMITATE, MACADAMIA
TERNIFOLIA (MACADAMIA) SEED OIL, TOCOPHERYL ACETATE,
PROPYLENE GLYCOL DICAPRYLATE/DICAPRATE, TOCOPHEROL,
ASCORBYL PALMITATE, CITRIC ACID, NYMPHAEA ALBA(WATER LILY)
FLOWER EXTRACT, BHT, DEHYDROACETIC ACID, METHYLPARABEN,
SORBIC ACID, SODIUM DEHYDROACETATE. [+/-MAY CONTAIN: IRON
OXIDES (CI 77499), ALUMINIUM POWDER (CI 77000), TITANIUM DIOXIDE
(CI 77891)].

LORD & BERRY

SUPREME EYE PENCIL

BLACK WARDROBE COLLECTION

CHARACTERISTICS:

A new smart generation of a high-performing pencil. SUPREME is a metallic shine eye liner providing high coverage. It can be easily and conveniently smudged and blended to achieve an even more expressive look. SUPREME Eye Pencil is a black pencil turning in 3 different colors: PURPLE, GREEN and BLUE.



UNIQUE QUALITIES:

- Extremely soft
- Excellent color pay off
- High coverage
- Formulated with Jojoba oil
- Metallic shine finish for a vibrant effect

BENEFITS:

- Waterproof and longwear tested for more than 6 hours
- Free of mineral oil, paraffin and animal-derived ingredients
- Jojoba oil gives nourishment, protection and improves skin suppleness
- Easily blendable

HOW TO USE:

Apply Supreme with little pencil strokes and draw along the lash line, then blend. The creamy texture is ideal for blending and smudging with powder eye shadows.

GOES WELL WITH:

2 Phases Make Up Remover, Stardust Loose Powder Eye Shadow.

CUSTOMERS SHOULD KNOW:

Not tested on animals, dermatologically approved.

PRODUCT GROUP NUMBER: 100

INGREDIENTS:

CAPRYLIC/CAPRIC TRIGLYCERIDE, MICA, HYDROGENATED OLIVE OIL, DECYL ESTERS, DI-C20-40 ALKYL DIMER DILINOLEATE, HYDROGENATED OLIVE OIL MYRISTYL ESTERS, CERA ALBA (BEESWAX), SIMMONDSIA CHINENSIS (JOJOBA) SEED OIL, SYNTHETIC WAX, DISTEARDIMONIUM HECTORITE, PENTAERYTHRITYL TETRA-DI-T-BUTYLHYDROXYHYDROCINNAMATE, PROPYLENE CARBONATE.[+/-MAY CONTAIN: IRON OXIDE (CI 77499), TITANIUM DIOXIDE (CI 77891), IRON OXIDES (CI 77491), FERRIC FERROCYANIDE (CI 77510), CARMINE (CI 75470)].

LORD & BERRY

LINE/SHADE
EYE PENCIL

BLACK
WARDROBE
COLLECTION

CHARACTERISTICS:

The enhanced formula combines innovative technology with rich color pigments and glides onto eye for an ultra-fluid application. Line/Shade is designed to be applied on the eyes contour and in the waterline giving a deep vibrant look. It can be smudged to create a soft smoky eye.



UNIQUE QUALITIES:

- Balanced blend of waxes (63% natural origin) to ensure a good structure in application
- Special mix of microspheres imparts silky texture and promotes a perfect blend
- High Chroma Pigments offers full and deep color release from the first stroke

BENEFITS:

- Intense, soft And gliding texture
- Contour the lash line and the waterline
- Ultra blendable formula
- Intense color release

HOW TO USE:

For a diffused eye liner look softly smudge LINE/SHADE with an eye brush or it can be used to define lash line or in the waterline to create intensity.

GOES WELL WITH:

Precision Eye Shadow Brush #846, Seta eye shadow, #Reglam, Stardust

CUSTOMERS SHOULD KNOW:

Fantastic nuance eye liner, the Lord&Berry original.

PRODUCT GROUP NUMBER: 200

Shades #219, #221 available in Black Wardrobe Collection

INGREDIENTS:

HYDROGENATED POLYISOBUTENE, SYNTHETIC WAX, DIPENTAERYTHRITYL HEXAHYDROXYSTEARATE/HEXASTEARATE/HEXAROSINATE, ETHYLHEXYL PALMITATE, HDI/TRIMETHYLOL HEXYLLACTONE CROSSPOLYMER, NYLON-12,MICA, CERA ALBA (BEESWAX),COPERNICIA CERIFERA (CARNAUBA)WAX, OZOKERITE, SILICA, LECITHIN, TOCOPHEROL, ASCORBYL PALMITATE,CITRIC ACID. [+/-MAYCONTAIN:IRON OXIDES (CI 77499), ULTRAMARINE (CI 77007), MANGANESE VIOLET (CI 77742), CARMINE (CI 75470),TITANIUM DIOXIDE (CI77891),IRON OXIDES (CI 77491), IRON OXIDES (CI 77492), YELLOW 5 (CI 19140), CARMINE (CI 75470), TIN OXIDE, FERRIC FERROCYANIDE (CI 77510)].

CHARACTERISTICS:

Perfect your glimmering eye look with LINE/SHADE Glam liners. LINE/SHADE Glam is formulated with a rich blend of vibrant pigments for a stunning metallic color payoff and smooth texture upon application.



UNIQUE QUALITIES:

- Balanced blend of waxes (63% natural origin) to ensure a good structure in application
- Special mix of microspheres imparts silky texture and promotes a perfect blend
- High Chroma Pigments offers full and vibrant color release from the first stroke

BENEFITS:

- Intense, smooth and gliding texture
- Contour the lash line and the waterline
- Ultra blendable formula
- Metallic color release
- Easy-to-carry on eye liner format

HOW TO USE:

For a diffused eye liner look softly smudge LINE/SHADE Glam with an eye brush or it can be used to define lash line or in the waterline to create intensity.

GOES WELL WITH:

Precision Eye Shadow Brush #846, Seta eye shadow, #Reglam, Stardust

CUSTOMERS SHOULD KNOW:

- Parabens Free
- Talc Free
- Fragrance Free
- D5 Free

PRODUCT GROUP NUMBER: 200

INGREDIENTS:

TRIETHYLHEXANOIN, MICA, RICINUS COMMUNIS (CASTOR) SEED OIL, OZOKERITE, COPERNICIA CERIFERA (CARNAUBA) WAX, CERA ALBA (BEESWAX), DIPENTAERYTHRITYL TETRAHYDROXYSTEARATE/TETRAISOSTEARATE, POLYMETHYL METHACRYLATE, DICALCIUM PHOSPHATE, LECITHIN, SILICA, TIN OXIDE, ASCORBYL PALMITATE, TOCOPHEROL, CITRIC ACID. [+/- MAY CONTAIN: CI 77499 (IRON OXIDES), CI 77891 (TITANIUM DIOXIDE), CI 77491 (IRON OXIDES), CI 77492 (IRON OXIDES), CI 77510 (FERRIC AMMONIUM FERROCYANIDE), CI 77400 (BRONZE POWDER), CI 77400 (COPPER POWDER), CI 77000 (ALUMINIUM POWDER), CI 77510 (FERRIC FERROCYANIDE)].

LORD & BERRY

SMUDGEPROOF

WATERPROOF EYE PENCIL

**BLACK
WARDROBE
COLLECTION**

CHARACTERISTICS:

In one stroke, SMUDGEPROOF Eye Liner outlines the eyes from morning until night. Its run-proof formula is also suitable to create graphic style eye shadow. Waterproof, smudgeproof, long lasting, run-proof eye definition. Preferred by make up artists



UNIQUE QUALITIES:

- Soft formula, glides on easily
- Long lasting, waterproof, smudge proof
- Dries and seals in 30 seconds

BENEFITS:

- Creates excellent graphic eye shadow effect
- Maintains color and form for up to 24 hours

HOW TO USE:

Apply along the entire upper lash lid and half of the lower lash lid, start from the outside corner, for a '60s' look. For a more graphic and extravagant look, apply as an eye shadow on the upper eyelid, first by outlining then filling in the shape.

GOES WELL WITH:

Seta Eye Shadow, Stardust, Alchimia Mascara.

CUSTOMERS SHOULD KNOW:

Keep cap well closed, as formula dries out otherwise.

PRODUCT GROUP NUMBER: 700

INGREDIENTS:

FOR SHADE 0701: ISODODECANE, POLYETHYLENE, POLYBUTENE, HYDROGENATED VEGETABLE OIL, CERA MICROCRISTALLINA (MICROCRISTALLINE WAX), POLYISOPRENE, MICA, CERESIN, OZOKERITE, SIMMONDISIA CHINENSIS (JOJOBA) SEED OIL, DICALCIUM PHOSPHATE, PROPYL PARABEN, LECITHIN, TALC, MACADAMIA TERNIFOLIA (MACADAMIA) SEED OIL, RETINYL PALMITATE, TOCOPHERYL ACETATE, PROPYLENE GLYCOL DICAPRYLATE/DICAPRATE, TOCOPHEROL, ASCORBYL PALMITATE, BHT, NYMPHAEA ALBA (WATER LILY) FLOWER EXTRACT, CITRIC ACID, [+/- MAY CONTAIN: IRON OXIDES (CI 77499), FERRIC FERROCYANIDE (CI 77510), TITANIUM DIOXIDE (CI 77891)].

FOR SHADE 0703: ISODODECANE, POLYETHYLENE, POLYBUTENE, CERESIN, CERA MICROCRISTALLINA (MICROCRISTALLINE WAX), POLYISOPRENE, POLYMETHYL METHACRYLATE, HYDROGENATED VEGETABLE OIL, SIMMONDISIA CHINENSIS (JOJOBA) SEED OIL, DISTEARDIMONIUM HECTORITE, PROPYLENE CARBONATE, MICA, DICALCIUM PHOSPHATE, MACADAMIA TERNIFOLIA (MACADAMIA) SEED OIL, PROPYL PARABEN, RETINYL PALMITATE, TOCOPHERYL ACETATE, PROPYLENE GLYCOL DICAPRYLATE/DICAPRATE, LECITHIN, TALC, TOCOPHEROL, NYMPHAEA ALBA (WATER LILY) FLOWER EXTRACT, ASCORBYL PALMITATE, BHT, CITRIC ACID, [+/- MAY CONTAIN: IRON OXIDES (CI 77499), IRON OXIDES (CI 77491), IRON OXIDES (CI 77492), TITANIUM DIOXIDE (CI 77891)].

LORD & BERRY

VELLUTO
EYE PENCIL AND SHADOW

BLACK
WARDROBE
COLLECTION

CHARACTERISTICS:

Chic, flattering and elegant: VELLUTO (meaning Velvet in Italian) is a fail-safe eye pencil. With its smooth and powdery formula, it is a shadow in a pencil. VELLUTO glides on like a powdery liner and can be used to create both net color and a sultry sheer effect. For best results apply VELLUTO to eyelids and blend to create an eye shadow base.



UNIQUE QUALITIES:

- Powder liner, extremely soft formula
- Highly blendable and delicate on eye area
- Strong pigment intensity
- Use smudger applicator for a soft focus look on the eye

BENEFITS:

- Pencil format easy to control in application of shadow
- Sponge applicator tip can be used to blend product

HOW TO USE:

Apply along lash line with small strokes, then use built in applicator or Lord&Berry Eye Brushes to blend and create eye shadow base.

GOES WELL WITH:

Precision Eye Shadow Brush #0846, Eye Shader Brush #0845, any Lord&Berry Eye Liner.

CUSTOMERS SHOULD KNOW:

Leaves a surprisingly elegant and sophisticated definition to the eye.

PRODUCT GROUP NUMBER: 1800

INGREDIENTS:

IRON OXIDES (CI 77499), CAPRYLIC/CAPRIC TRIGLYCERIDE, PARAFFINUM LIQUIDUM (MINERAL OIL), SYNTHETIC BEESWAX, HYDROGENATED COCO-GLYCERIDES, SILICA, OZOKERITE, COPERNICIA CERIFERA (CARNAUBA) WAX, PROPYL PARABEN, RETINYL PALMITATE, TOCOPHERYL ACETATE, MACADAMIA TERNIFOLIA (MACADAMIA) SEED OIL, PROPYLENE GLYCOL DICAPRYLATE/DICAPRATE, TOCOPHEROL, ASCORBYL PALMITATE, LECITHIN, GLYCERYL STEARATE, GLYCERYL OLEATE, CITRIC ACID, NYMPHAEA ALBA (WATER LILY) FLOWER EXTRACT, BHT, DEHYDROACETIC ACID, METHYL PARABEN, SORBIC ACID, SODIUM DEHYDROACETATE.

LORD & BERRY

INKGLAM

EYE LINER

BLACK
WARDROBE
COLLECTION

CHARACTERISTICS:

A liquid eye liner formula packaged for precision. INKGLAM is the perfect product for lining and defining the eyes with either fine or bold lines with a shiny, patent finish. The firm, tapered tip of the applicator is easy to control and allows for a quick and precise application. INKGLAM is quick-drying, long-wearing, smudge-resistant and waterproof. It can be easily removed with Lord&Berry 2 Phases Waterproof Make Up Remover.

UNIQUE QUALITIES:

- Deep black pigments and iridescent elements give an intense eye make up, patent finish
- Waterproof, long-lasting and rapid drying

BENEFITS:

- Tapered pen tip maximises result of fluid texture
- Outlines eye cleanly, intensely and precisely in a single gest
- Lasts 24 hours

HOW TO USE:

Shake before use. Draw a fine line along the base of the upper lashes. For a sophisticated make up, draw a bolder line from the inner corner of the eye outwards, tapering off at the outer corner. For inexperienced users, first trace small strokes along the upper lash line, unite the small strokes with a second coat to create a more net and continuous color.

GOES WELL WITH:

Vogue Matte Lipstick: paired with a matte finish lipstick, create an infinitely glamorous look.

CUSTOMERS SHOULD KNOW: INKGLAM achieves one of the all time glamorous make up looks: a curve of eye liner.



PRODUCT GROUP NUMBER: 1121

INGREDIENTS:

AQUA (WATER), STYRENE/ACRYLATES/AMMONIUM METHACRYLATE COPOLYMER, BUTYLENE GLYCOL, BLACK 2 (CI 77266) [NANO], BIS-PEG/PPG-16/16 PEG/PPG-16/16 DIMETHICONE, SORBITOL, BENZYL ALCOHOL, LAURETH-2 BENZOATE, SODIUM LAURETH-12 SULFATE, PEG-6 CAPRYLIC/CAPRIC GLYCERIDES, SODIUM METHYLPARABEN, AMMONIUM HYDROXYDE, SODIUM COCOYL APPLE AMINO ACIDS, CAPRYLIC/CAPRIC TRIGLYCERIDE, SODIUM POLYACRYLATE, POTASSIUM SORBATE, METHYLPARABEN, PROPYLPARABEN, TRISODIUM EDTA, COCONUT ACID, HEXYLENE GLYCOL, SODIUM CHLORIDE, DISODIUM EDTA.

LORD & BERRY

SHODŌ
STYLOGRAPHIC EYE LINER

BLACK
WARDROBE
COLLECTION

CHARACTERISTICS:

Japanese calligraphy (Shodō) is a form of calligraphy, or artistic writing, of the Japanese language. Lord and Berry Shodō eye liner pen features a Japanese calligraphy-inspired that draws precise thick and super-fine lines. Shodō tapered, precision brush design makes it easy to paint on pure, deep color that will not budge. Combined with a formula that dries super-quick for a smudge-proof application, Shodō liquid liner glides on smoothly. The film-type base line is resistant to sweat and water but it dissolves away in warm water.



UNIQUE QUALITIES:

- Japanese calligraphy-inspired
- Draw precise thick and super-fine lines - tapered precision brush design
- Quick-drying
- Sweat and water resistant
- Does not budge

BENEFITS:

- Long-lasting
- tapered precision brush maximizes the result - color rich
- Easy removable with WARM water
- Easy to use

HOW TO USE:

Gently pull the precision tip outward on the outer eye corner to create a smooth surface. Hold applicator at a slight angle and apply close to lash line. Use a light touch and the pointed tip of the brush for a fine line or a firmer touch and the flat side of the brush for a bolder, more dramatic look.

Attention: replace eye liner cap securely after each use.

GOES WELL WITH:

Mascara Back in Black, Seta eye shadow, #Reglam, Velluto.

CUSTOMERS SHOULD KNOW:

- Paraben free
- Not tested on animals

PRODUCT GROUP NUMBER: 1112

INGREDIENTS:

WATER(AQUA), STYRENE/ACRYLATES COPOLYMER, BLACK 2 (CI77266)[NANO], BUTYLENE GLYCOL, ALCOHOL, 1,2-HEXANEDIOL, ACRYLATES/OCTYLACRYLAMIDE COPOLYMER, BEHENETH-30, PENTYLENE GLYCOL, SODIUM BENZOATE, POTASSIUM SORBATE, PHENOXYETHANOL, SODIUM HYDROXIDE, CAPRYLYL GLYCOL, ETHYLHEXYLGLYCERIN.

LORD & BERRY

PERFECTO

GRAPHIC LINER

BLACK
WARDROBE
COLLECTION

CHARACTERISTICS:

A new quick and easy way to draw a super graphic line. The chubby felt-tip marker goes from a thin to a thick line quickly.

PERFECTO Graphic Liner makes your make up last over 24 hours. The extremely silky and smooth texture will live you with the feeling of wearing no make up at all!



UNIQUE QUALITIES:

- Waterproof
- High durability thanks to a newly developed FILM BUILDER
- Marker tip gives you total control
- Easy to apply
- Gluten free

BENEFITS:

- Will last over 24 hours
- No staining after removing
- Smudgeproof
- Quick-drying

HOW TO USE:

Apply eye liner at the base of lashes. Line from the inner corner of the eyes to the outer corner, graduating in thickness as you go.

GOES WELL WITH:

Back in Black Mascara, Velluto, Stardust, Seta.

CUSTOMERS SHOULD KNOW:

Paraben free, gluten free, close cap tightly after use.



DUO TIPS

Pull tip up and turn the tip upside-down if damaged

PRODUCT GROUP NUMBER: 1101

INGREDIENTS:

WATER (AQUA), ALOE BARBADENSIS (ALOE VERA) LEAF JUICE POWDER, POLYURETHANE-35, STYRENE/ACRYLATES COPOLYMER, LAURETH-21, POLYGLYCERYL-2 CAPRATE, METHYLPROPANEDIOL, PEG-40 HYDROGENATED CASTOR OIL, GLYCERIN, BUTYLENE GLYCOL, TRI-C12-13 ALKYL CITRATE, PHENOXYETHANOL, CAPRYLYL GLYCOL, PANTHENOL, STEARIC ACID, PALMITIC ACID, SODIUM DEHYDROACETATE, TOCOPHEROL, PHENYLPROPANOL, ETHYLHEXYLGLYCERIN, TETRASODIUM GLUTAMATE DIACETATE, HELIANTHUS ANNUUS(SUNFLOWER) SEED OIL, CITRIC ACID, SODIUM HYDROXIDE, BLACK 2 (CI 77266) [NANO].

LORD & BERRY

MAGNIFICO
CREAM POT LINER

BLACK
WARDROBE
COLLECTION

CHARACTERISTICS:

Highly pigmented, Magnifico texture delivers drama for your eyes in an exclusive performing cream pot liner. Magnifico stays in place throughout the day with transfer resistant and long wearing properties. Easy to apply thanks to its gel based creamy texture. The finish is rich, pure pigmented and completely weightless. Magnifico creates an extremely adherent and long wearing film that won't smudge or fade. Volatile Oil and Silicone enhance the wear and deliver perfect dry time.

It blends easily for a smoky-eye look and can even be used to shade the eyelids.

Apply Magnifico using Pointed Eye Liner Brush 847 (sold separately).



UNIQUE QUALITIES:

- Long wear properties
- No transfer effect
- Extreme adherence
- Smudgeproof film
- Rich color and full coverage

BENEFITS:

- Perfect dry time
- Long lasting
- Creamy texture
- Easy application and perfect control

HOW TO USE:

Dip the tip of Pointed Eye liner brush 847 (sold separately) into Magnifico Cream pot liner, being sure to coat both sides of the brush. Wipe off any excess on a tissue. Apply liner close to the lash line, from the inner to the outer eye corner.

GOES WELL WITH:

All mascaras, #Reglam, Seta Eye Shadow, Velluto, Silk Kajal.

CUSTOMERS SHOULD KNOW:

Paraben free
Fragrance free
Not tested on animals

PRODUCT GROUP NUMBER: 1102

INGREDIENTS:

ISODODECANE, IRON OXIDE (CI 77499), CYCLOPENTASILOXANE, DIMETHICONE, POLYETHYLENE, TRIHYDROXYSTEARIN, POLYBUTENE, QUATERNIUM-90BENTONITE, OCTYLDODECANOL, POLYISOPRENE, PROPYLENE CARBONATE, ISOPROPYLTITANIUM TRIISOSTEARATE, TALC, BHT, DICALCIUMPHOSPHATE, MICA.

LORD & BERRY

KAJAL STICK

INTENSE BLACK KAJAL

BLACK
WARDROBE
COLLECTION

CHARACTERISTICS:

The ancient Indian beauty secret! KAJAL STICK is an extreme and intense black kajal in cone stick shape. The creamy formula emphasizes your eyes. It is gentle enough to be used on the inner eye. Contains natural actives that have a protective action for the stratum cornea.



UNIQUE QUALITIES:

- Pure pigment
- Creamy texture
- Adapted for use on the inside of the eyelid
- Extremely comfort
- Non-irritate

BENEFITS:

- Dramatises the eyes
- Protective action for the stratum cornea
- Vitamin E antiage

HOW TO USE:

Apply along the inside of the eyelids. For an intense kohl look apply on inside lower lid and outside upper lid, with or without eye shadow.

GOES WELL WITH:

Stardust Eye Shadow Loose Powder in Black to create the original smokey eye look created by the fashion house Biba in the 70s, Velluto Eye Liner and Shadow, and Seta Eye Shadow Pressed Powder.

CUSTOMERS SHOULD KNOW:

Not tested on animals.

PRODUCT GROUP NUMBER: 1151

INGREDIENTS:

CAPRYLIC/CAPRIC/MYRISTIC/STEARIC TRIGLYCERIDE, IRON OXIDE (CI 77499), OZOKERITE, FERRIC FERROCYANIDE (CI77510), PROPYLPARABEN, DICALCIUM PHOSPHATE, GLYCERYL ETHYLHEXANOATE/STEARATE/ADIPATE, MICA, OLIVE GLYCERIDES, TOCOPHERYL ACETATE, PENTAERYTHRITYL TETRA-DI-T-BUTYL HYDROXYHYDROCINNAMATE.

LORD & BERRY

MASCARE

TREATMENT & VOLUME MASCARA

BLACK
WARDROBE
COLLECTION

CHARACTERISTICS:

An extraordinary 2-in-1 treatment mascara that loves as it lengthens. With added Vitamin E to strengthen, Panthenol to provide flexibility and Silk Protein to keep lashes strong. A mascara that works hard to keep lashes fit and full.



UNIQUE QUALITIES:

- Treating, volumising, lengthening formula infused with Silk Proteins, Panthenol and Vitamin E
- Black Metallic pigments give color both light reflecting and defining

BENEFITS:

- Volumising Brush
- Hollow Fibre technology sculpts every single lash
- Developed for sensitive eyes

HOW TO USE:

For the upper eyelids: tilt the head back and look down. Apply starting from the roots and sweeping towards the tips using small left-right movements. For the lower eyelashes tilt the head forward and look up.

GOES WELL WITH:

Silk Kajal Kohl Eye Liner, a perfect pair for minimalist definition with maximum effect.

CUSTOMERS SHOULD KNOW:

MASCARE is an 'Eyelash Spa': healing and beautifying lashes simultaneously. Never apply mascara in a moving vehicle.

PRODUCT GROUP NUMBER: 1351

INGREDIENTS:

AQUA (WATER), ACACIA SENEGAL GUM, PARAFFIN, COPERNICIA CERIFERA (CARNAUBA) WAX, MICA, STEARIC ACID, CERA ALBA (BEESWAX), GLYCERYL STEARATE, PROPYLENE GLYCOL, TRIETHANOLAMINE, PEG-75 STEARATE, PVP/HEXADECENE COPOLYMER, COLOPHONIUM/ROSIN, METHYLPARABEN, SODIUM DEHYDROACETATE, PROPYLPARABEN, IMIDAZOLIDINYL UREA, SERICA POWDER (SILK POWDER), PANTHENOL, TOCOPHERYL ACETATE, MACADAMIA TERNIFOLIA (MACADAMIA) SEED OIL, NYMPHAEA ALBA (WATER LILY) FLOWER EXTRACT, SILICA, IRON OXIDE (CI 77499), BLACK 2 (CI 77266) [NANO].

LORD & BERRY

BACK IN BLACK

DEEP BLACK MASCARA

BLACK
WARDROBE
COLLECTION

CHARACTERISTICS:

Deep black high definition and volume mascara. One stroke application of deep black color for high density glance.

Precision applicator brush for touch up of the smallest eye lashes.



UNIQUE QUALITIES:

- Formula based on natural waxes with hydrating and nourishing properties to create a protective, waterproof film
- Nourishing active ingredients and rice bran extracts with restructuring effect
- Easy to apply
- 'Fish' shaped application brush for high definition

BENEFITS:

- Creates both lengthening and volume effect
- Long Lasting
- Extreme lashes

HOW TO USE:

Apply starting from the roots and sweeping towards the tips using small left-right movements.

GOES WELL WITH:

Smudgeproof Waterproof Eye Pencil for a total look with Seta or any black wardrobe products and use 2 Phases Waterproof Make Up Remover, the gentlest and fastest way to remove long lasting eye make up.

CUSTOMERS SHOULD KNOW:

Defines and lengthens eyelashes and makes them thicker. Never apply mascara in a moving vehicle.

PRODUCT GROUP NUMBER: 1352

INGREDIENTS:

AQUA (WATER), SYNTHETIC BEESWAX, PARAFFIN, ACACIA SENEGAL GUM, ORYZA SATIVA (RICE) BRAN WAX, BUTYLENE GLYCOL, GLYCERYL STEARATE, STEARIC ACID, POLYBUTENE, TRIETHANOLAMINE, PALMITIC ACID, VP/EICOSENE COPOLYMER, COPERNICIA CERIFERA (CARNAUBA) WAX, GLYCERIN, PHENOXYETHANOL, PROPYLPARABEN, HYDROXYETHYLCELLULOSE, CELLULOSE, PVP. [+/- MAY CONTAIN: BALCK 2 (CI 77266) [NANO], IRON OXIDES (CI 77499)].

LORD & BERRY

PRODIGIOUS

FALSE LASH & SUPER VOLUME EFFECT

BLACK
WARDROBE
COLLECTION

CHARACTERISTICS:

Prodigious is a high-impact mascara that curls and adds volume to your eye lashes. This revolutionary formula glides on thanks to the curved brush which delivers an exceptional curling power and styles lashes from root to tip providing a bold false lash look. The Prodigious waxes and oils combination offers a hyper volume complex that boosts adherence, nourishes and strengthens lashes for a wide and gorgeous eye look without clumping or smudging.

The addition of Diamond Powder infuses vitality and power to your eye lashes.



UNIQUE QUALITIES:

- Hyper volume and exceptional curl effect
- Lashes thickness enhancer
- Lashes conditioner
- No clumping and smudging
- Bold false lash look
- Olive extract provides a wonderful polished effect

BENEFITS:

- Rice bran provides anti-oxidant and nourishing properties
- Vitaminated peptide promotes lash growth and strength
- Carob tree seeds extract, a conditioner natural active, protects and repairs lashes damages
- Carnauba and Candelilla waxes combination makes the texture easily buildable
- Diamond powder infuses vitality and power to lashes

HOW TO USE:

Apply from root sweeping towards the tip with small left-right movements.

GOES WELL WITH:

Any Black Wardrobe Eye products, Seta Eye Shadows, #Reglam, Stardust.

CUSTOMERS SHOULD KNOW:

Not tested on animals
Paraben free
Never apply mascara in a moving vehicle

PRODUCT GROUP NUMBER: 1353

INGREDIENTS:

AQUA (WATER), CI 77499 (IRON OXIDES), COPERNICIA CERIFERA (CARNAUBA) WAX, CYCLOPENTASILOXANE, ORYZA SATIVA (RICE) BRAN WAX, HYDROGENATED OLIVE OIL STEARYL ESTERS, ALCOHOL DENAT., PALMITIC ACID, STEARIC ACID, TRIETHANOLAMINE, ACACIA SENEGAL GUM EXTRAT, EUPHORBIA CERIFERA (CANDELILLA) WAX, PROPYLENE GLYCOL, PHENOXYETHANOL, GLYCERIN, VP/VA COPOLYMER, AMINOMETHYL PROPANEDIOL, PANTHENOL, POLYVINYL ALCOHOL, CHLORPHENESIN, ASCORBYL PALMITATE, ETHYLHEXYLGLYCERIN, HYDROLYZED CERATONIA SILIQUA SEED EXTRACT, POLYMETHYLSILSESQUIOXANE, ZEA MAYS (CORN) STARCH, POTASSIUM SORBATE, SODIUM BENZOATE, POLYQUATERNIUM-7, BIOTINOYL TRIPEPTIDE-1, GUAR HYDROXYPROPYLTRIMONIUM CHLORIDE, DIAMOND POWDER.

LORD & BERRY

BOOST
TREATMENT MasCare

BLACK
WARDROBE
COLLECTION

CHARACTERISTICS:

Give your lashes an XL boost! The innovative BOOST Treatment MasCare glides on with just one sweep to evenly coat and smooth your lashes. The magic behind this mascara is the high-performance conditioning formula which improves extra length and thickness to your lashes keeping them stronger than ever.



QUALITIES & BENEFITS:

- Blend of rice bran and synthetic waxes to optimize lash volume, while leaving the lash soft and flexible
- Powerful lash polymers work to coat and lift each lash. Lashes are lifted to create a volume effect with intense black pigment
- Unique complex of Panthenol and Biotinyl-Amino acid promotes lash growth and strength reducing risk of loss
- Thermal water is rich in oligo elements which stimulate the lashes' metabolism and make them stronger
- Vegetal Sphingolipid prevents lash loss by balancing the lash life cycle
- Plumperlash complex provides anti-oxidant and anti-aging properties
- Dual side brush makes building length and volume easier than ever, allowing to capture even the finest lashes for a separated, feathery finish

HOW TO USE:

Apply from root sweeping towards the tip with small left-right movements.

GOES WELL WITH:

Any Black Wardrobe Eye products, Seta Eye Shadows, #Reglam, Stardust, Glitter.

CUSTOMERS SHOULD KNOW:

Paraben free
TEA free
Sulfates free

Never apply mascara in a moving vehicle.

PRODUCT GROUP NUMBER: 1355

INGREDIENTS:

AQUA (WATER), SYNTHETIC BEESWAX, PARAFFIN, ACACIA SENEGAL GUM, BUTYLENE GLYCOL, STEARIC ACID, GLYCERYL STEARATE, PALMITIC ACID, VP/EICOSENE COPOLYMER, VP/HEXADECENE COPOLYMER, COPERNICIA CERIFERA CERA (COPERNICIA CERIFERA (CARNAUBA) WAX), AMINOMETHYL PROPANEDIOL, ORYZA SATIVA CERA (ORYZA SATIVA (RICE) BRAN WAX), GLYCERIN, DIMETHICONE, PHENETHYL ALCOHOL, OCTYLDODECANOL, ETHYLHEXYLGLYCERIN, PANTHENOL, HYDROXYETHYLCELLULOSE, ACACIA FARNESIANA FLOWER CERA (ACACIA FARNESIANA FLOWER WAX), CELLULOSE, PVP, SPHINGANINE, PHENOXYETHANOL, BIOTINOYL TRIPEPTIDE-1, +/- (MAY CONTAIN): CI 77499 (IRON OXIDES), CI 77007 (ULTRAMARINES), CI 77266 (BLACK 2)(NANO).

LORD & BERRY

ALCHIMIA

HIGH DEFINITION MASCARA

BLACK
WARDROBE
COLLECTION

CHARACTERISTICS:

Spectacular definition, infinite length and natural curling. 3 in 1 formula thanks to the special soft silicon wand matching a perfect treatment formula. The special conditioning ingredients regenerate lashes and prevent moisture loss. Easy to apply and easy to remove.



UNIQUE QUALITIES:

- Definition, length and curl. Regenerate lashes and prevent moisture loss
- Formula infused with D-Panthenol and Vitamin E, Bamboo extracts
- Special silicon applicator. Coats, separates and models every eyelash
- High color intensity

BENEFITS:

- Water resistant
- Long lasting but easy to remove. Tested for more than 4 hours. Fail safe
- Quick Dry Up
- Smudge proof, no clumping or globbing
- Paraben free

HOW TO USE:

Apply starting from the roots and sweeping towards the tips using small left-right movements.

GOES WELL WITH:

Silk Kajal Kohl Eye Liner, a perfect pair for minimalist definition with maximum effect.

CUSTOMERS SHOULD KNOW:

Not tested on animal
Suitable for contact lense wearers
Ophthalmologically tested
Dermatologically tested
Applicator – good for quick retouches
Never apply mascara in a moving vehicle

PRODUCT GROUP NUMBER: 1370

INGREDIENTS:

AQUA (WATER), IRON OXIDES(CI 77499), SORBITAN OLIVATE, COPER-NICIA CERIFERA (CARNAUBA) WAX, ORYZA SATIVA (RICE) BRAN WAX, STEARIC ACID, VP/VA COPOLYMER, GLYCERIN, HYDROXYETHYLCELLULOSE, VP/HEXADECENE COPOLYMER, PHENOXYETHANOL, SORBITOL, AMINOMETHYL PROPANOL, TOCOPHEROL, BIS-PEG/PPG-16/16 PEG/PPG-16/16 DIMETHICONE, DIMETHICONE, PPG-17/IPDI/DMPA COPOLYMER, PANTHENOL, ISOPROPYL MYRISTATE, CAPRYLIC/CAPRIC TRIGLYCERIDE, ASCORBYL PALMITATE, CARTHAMUS TINCTORIUS(SAFFLOWER) SEED OIL, MACADAMIA TERNIFOLIA SEED OIL, RETINYL PALMITATE, SILK POWDER (SERICA POWDER), IODOPROPYNYL BUTYLCARBAMATE, ALOE BARBADENSIS (ALOE VERA) LEAFEXTRACT, BAMBUSA VULGARIS LEAF/STEM EXTRACT.

LORD & BERRY

PERFECT BROW

PENCIL DEFINER

CHARACTERISTICS:

PERFECT BROW is a smart, highly pigmented, two-color brow pencil to enhance and define the natural shape of your brows. Draw with the marble tip then blend with the integrated applicator and shape for well-groomed, professional looking results.



UNIQUE QUALITIES:

- Vegetable oils for better creaminess and shine.
- Built in brush to blend and groom eyebrows
- two-colour (marbled) lead for multipurpose color effect

BENEFITS:

- Marbled colour prevents unnatural effect most eyebrow pencils create, and allows natural brow color hues
- Available in 2 references

HOW TO USE:

Brush eyebrows upward with integrated applicator, fill in with pencil then blend and shape with applicator.

GOES WELL WITH:

Alchimia and Perfect Brow make a great basic eye kit. Perfect Brow also goes well with Luminizer and Stardust in White Moon to go under the eye brow line.

CUSTOMERS SHOULD KNOW:

Perfect Brow is an eye brow kit in a pencil.

PRODUCT GROUP NUMBER: 1700

INGREDIENTS:

HYDROGENATED PALM KERNEL GLYCERIDES, HYDROGENATED PALM GLYCERIDES, SYNTHETIC BEESWAX, COPERNICIA CERIFERA (CARNAUBA)WAX, HYDROGENATED PALM OIL, GLYCERYL OLEATE, HYDROGENATED TALLOW, MICA, RICINUS COMMUNIS (CASTOR OIL), PROPYL PARABEN, SILICA, TOCOPHEROL, ASCORBYL PALMITATE, GLYCERYL STEARATE, LECITHIN, CITRIC ACID. [± MAY CONTAIN: TITANIUM DIOXIDE (CI 77891), IRON OXIDES (CI 77499), IRON OXIDES (CI 77492), IRON OXIDES (CI77491), ALLUMINIUM POWDER (CI 77000)].

CHARACTERISTICS:

Diva Eye Brow Wet & Dry Powder for well groomed brows, instantly provides a polished and elegant look. It shapes and defines brows with a rich powdery matte formula. Use Glacée Eye Brow Gel Fixer wet for a long lasting effect. It is soft as silk if used dry for a marvelous payoff. Best used with Perfect Brow, Glacée Eye Brow Gel Fixer and brush #0841.



UNIQUE QUALITIES:

- Resists heat, long lasting if used wet
- Design and fill brows, match and mix colors

BENEFITS:

- Practical packaging
- Excellent coverage, use as a base for eye make up
- Very rich formulation for small dose usage

HOW TO USE:

Clean your Eye Brows and brush them using an eye brow brush or Perfect Brow applicator wand.

Dip your angular brow brush in to your powder and begin applying it from inner eye brow working outwards using light strokes. You will simply brush the color over them. It is advisable to begin with less amount of brow powder and you can always increase the amount. When applying at the outer edges of your eyebrows follow the broes of shape and ensure you use very steady strokes. Using a Perfect Brow applicator or brush, go over the eye brows to help in blending them.

USE in the following trio combinations:

- Blondie 1753 - 1750 - 1752
- Red / brunette 1750 - 1752 - 1751
- Brunette 1750 - 1752 - 1754
- Black / brunette 1753 - 1754- 1755

GOES WELL WITH:

Perfect Brow and Glacée.

CUSTOMERS SHOULD KNOW:

Diva can be used wet or dry to fill in brow gaps. Use it to define your eye brow shape to better achieve a natural effect.

PRODUCT GROUP NUMBER: 1750

INGREDIENTS:

TALC, PHENYL TRIMETHICONE, ALUMINUM STARCH OCTENYLSUCCINATE, DIMETHICONE, MICA, OCTYLDODECYL STEAROYL STEARATE, ISOPROPYL MYRISTATE, BHA, BUTYLPARABEN. [+/- MAY CONTAIN: IRON OXIDES (CI 77499), IRON OXIDES (CI 77491), TITANIUM DIOXIDE (CI 77891), IRON OXIDES (CI 77492)].

LORD & BERRY

STRIP KIT
EYE BROW STYLING SET

CHARACTERISTICS:

A full set with everything you need to expertly shape, define and design perfect eye brows. Strip Kit comes with two matte wet&dry powders, a pigmented setting wax and a mirror. The powders, easily blended to match your natural brow color, fill and define while the pigmented wax tames and grooms the brows. Available in two shade combinations, this travel kit palette is a must-have tool for brows.



UNIQUE QUALITIES:

- An all-in-one kit for perfectly groomed brows
- Wet&Dry powders resistant to heat
- Design and fill brows, match and mix colors
- Pigmented wax tames and grooms brows

BENEFITS:

- Practical packaging
- Easy to blend
- Very rich formulation for small dose usage
- Perfect to define your eye brow shape to better achieve a natural effect

HOW TO USE:

Apply powder to fill and design brows using an angled brow brush. Mix both powder shades to create your perfect color. Then use the pigmented setting wax to create a precise shape and keep brows in place.

GOES WELL WITH:

Perfect brow, Must Have Tinted Brow Mascara, Must Have Brow Fixer Gel

CUSTOMERS SHOULD KNOW:

- Strip Kit powders can be used wet or dry .
- Not tested on animals.

PRODUCT GROUP NUMBER: 1700

INGREDIENTS:

FOR WET & DRY BROW POWDER:

INGREDIENTS:

TALC, PHENYL TRIMETHICONE, ALUMINUM STARCH OCTENYLSUCCINATE, DIMETHICONE, MICA, OCTYLDODECYL STEAROYL STEARATE, ISOPROPYL MYRISTATE, BHA, BUTYLPARABEN. [+/- MAY CONTAIN: IRON OXIDES (CI 77499), IRON OXIDES (CI 77491), TITANIUM DIOXIDE (CI 77891), IRON OXIDES (CI 77492)].

FOR BROW WAX:

INGREDIENTS:

ISOPROPYL MYRISTATE, TALC, HYDROGENATED CASTOR OIL DIMER DILINOLEATE, EUPHORBIA CERIFERA (CANDELILLA) WAX, CERA ALBA (BEESWAX), OZOKERITE, PHENYL TRIMETHICONE, ALUMINUM STARCH OCTENYLSUCCINATE, DIMETHICONE, BHA, OCTYLDODECYL STEAROYL STEARATE, BHT, MICA, METHYLPARABEN, ETHYLPARABEN, BUTYLPARABEN, PROPYLPARABEN [+/- MAY CONTAIN: IRON OXIDES (CI 77499), IRON OXIDES (CI 77491), IRON OXIDES (CI 77492), TITANIUM DIOXIDE (CI 77891)].

LORD & BERRY

GLACÉE
EYE BROW GEL FIXER

CHARACTERISTICS:

A gel that naturally strokes brows into shape for a perfect look which lasts all day. GLACÉE contains Vitamin E which is a natural antioxidant and it has a light texture easy to apply.



UNIQUE QUALITIES:

An eye brow gel is an excellent tool because it will allow you to keep your eye brows in place.

BENEFITS:

Adds shine and style with no flaking or stiffening.

HOW TO USE:

Apply on eye brows abundantly.

CUSTOMERS SHOULD KNOW:

One of the advantages of having more eye brow hair is the ability to shape the brows. For thicker eye brows try to brush them well first then apply fixer as needed. For this reason it is important for you to look for products that can help you shape your natural eye brow.

PRODUCT GROUP NUMBER: 1630

INGREDIENTS:

AQUA (WATER), GLYCERIN, PROPYLENE GLYCOL, POLYVINYL ALCOHOL, CARBOMER, IMIDAZOLIDINYL UREA, TRIETHANOLAMINE, METHYLPARABEN, TOCOPHERYL ACETATE. [+/- MAY CONTAIN: IRON OXIDES (CI77491), IRON OXIDES (CI 77492), IRON OXIDES (CI 77499)].

LORD & BERRY

MUST HAVE
TINTED BROW MASCARA

CHARACTERISTICS:

Perfect made up eyebrows! Designed for hydrating and enhancing eyebrows definition. Its texture naturally tints the brows and tames unruly brow hair. Thanks to the presence of nylon fibers in the formula it gives a thickening effect whilst delivering a noticeable improvement in eyebrow hair structure. Must Have is formulated with Hydroviton® PLUS that leaves the brows beautifully conditioned. This brush-on gel dries to a natural look finish for instantly perfect brows.



UNIQUE QUALITIES:

- Creamy and gel texture
- Perfect control on application thanks to the small brush applicator
- Nylon Fibers thickening
- Natural finish
- Paraben free
- No TEA

BENEFITS:

- Keep unruly brow hair in place
- Hydration thanks to the active ingredient Hydroviton® PLUS
- Enhance definition to eyebrow
- Filling in small gaps
- Improve brow hair structure

HOW TO USE:

For the most natural look start at the inner edge of your brow and move outward. Repeat to add more volume.

GOES WELL WITH:

Perfect Brow, Diva

CUSTOMERS SHOULD KNOW:

Not tested on animals

PRODUCT GROUP NUMBER: 1700

INGREDIENTS:

AQUA (WATER), GLYCERYL STEARATE, PVP, GLYCERIN, PEG-100 STEARATE, POLYACRYLAMIDE, PHENOXYETHANOL, C13-14 ISOPARAFFIN, SODIUM DEHYDROACETATE, LAURETH-7, DISODIUM EDTA, ETHYLHEXYLGLYCERIN, NYLON-6, PENTYLENE GLYCOL, CITRIC ACID, FRUCTOSE, SODIUM HYDROXIDE, UREA, ALLANTOIN, MALTOSE, SODIUM CHLORIDE, SODIUM LACTATE, SODIUM PCA, TREHALOSE, SILICA, GLUCOSE, SODIUM HYALURONATE.[+/- MAY CONTAIN: IRON OXIDE (CI 77499), IRON OXIDE (CI 77492), TITANIUM DIOXIDE (CI 77891), IRON OXIDES (CI 77491), MICA (CI 77019)].

LORD & BERRY

MUST HAVE
BROW FIXER GEL

CHARACTERISTICS:

A gel that naturally strokes brows into shape for a perfect look which last all day. MUST HAVE Brow Fixer Gel gives texture and provides structure thanks to the presence of film-forming agents. Designed for enhancing eye brows definition and taming unruly brow hair.



UNIQUE QUALITIES:

- Gel texture
- Very easy to apply
- Perfect control on application thanks to the small brush
- Natural fixer

BENEFITS:

- Keeps unruly brow hair in place
- Enhances definition and bright to eye brow
- Improves brow hair structure

HOW TO USE:

For the most natural look start at the inner edge of your brow and move outward.

GOES WELL WITH:

Perfect Brow, Diva, Must Have Tinted Brow Mascara

CUSTOMERS SHOULD KNOW:

Not tested on animals
Paraben free
NO TEA

PRODUCT GROUP NUMBER: 1710

INGREDIENTS:

AQUA (WATER), ALCOHOL DENAT., GLYCERIN, TRIETHANOLAMINE, PANTHENOL, PROPYLENE GLYCOL, PHENOXYETHANOL, CARBOMER, VP/VA COPOLYMER, ETHYLHEXYLGLYCERIN.

LORD & BERRY

STARDUST

EYE SHADOW LOOSE POWDER

**BLACK
WARDROBE
COLLECTION**

CHARACTERISTICS:

Brilliant and sensual, lighten up your eyes with an iridescence. STARDUST is a highly concentrated, luminous, loose pigmented powder that creates a seductive glitter when pressed around the eye area.



UNIQUE QUALITIES:

- Iridescent and metallic powders for a spectacular brightening effect
- Excellent pay off release
- Adheres well to the skin

BENEFITS:

- Blends easily
- Can be more or less intense depending on the amount of product used.

HOW TO USE:

Press onto eye area with a brush and blend on upper eyelid. Can also be used on top of cheek bones just under eye brows. Mix colors for special effects.

GOES WELL WITH:

Lord & Berry Brush #0845 for Eye Shadow, any Lord & Berry Liner.

CUSTOMERS SHOULD KNOW:

Offers the possibility to create a personal color and intensity by mixing 2 or three colors together and controlling quantity of application.

PRODUCT GROUP NUMBER: 470

Shade #471 available in Black Wardrobe Collection

INGREDIENTS:

MICA, ISOSTEARYL NEOPENTANOATE, DIMETHICONE, ISOPROPYL ISOSTEARATE, DEHYDROACETIC ACID, BHA, OCTYLDODECYL STEAROYLSTEARATE, SOPROPYL MYRISTATE. [+/-MAY CONTAIN:IRON OXIDES (CI77491, CI 77492, CI 77499), BLUE 1 (CI 42090:2), YELLOW 23 (CI 19140:1), FERRIC FERROCYANIDE (CI 77510)].

LORD & BERRY

#REGLAM
CRAYON EYE SHADOW

BLACK
WARDROBE
COLLECTION

CHARACTERISTICS:

#REGLAM Crayon Eye Shadow provides easy a long wearing, intense, blendable application. Its creamy texture delivers smooth and velvety finish. #REGLAM formula is easy to blend and, once set, the color is bright and doesn't crease or dry out. These crayon shadows have flexible functionality to complete the make up of the eyelid or of the eye line or even highlight the eye contour. It's an ideal base for layering with powder eye shadow to increase color intensity.



UNIQUE QUALITIES:

- Long wearing formula
- Smooth and creamy
- Easily blendable
- Easy to apply
- Intense with high payoff and bright colors
- Paraben free
- Fragrance free

BENEFITS:

- Versatile functionality to shade the eye lid, line or highlight the eyes
- Perfect base for powder eye shadow to increase color intensity
- Does not crease or dry out
- Long wearing

HOW TO USE:

Step 1 : Apply #Reglam Crayon Eye Shadow across eyelids and blend upward and outward into creases
Step 2 : For added definition, glide #Reglam along your upper lash lines and extend outward.

GOES WELL WITH:

Back in Black Mascara, Seta Eye Shadow, Stardust, Kajal Stick, Liquid Eye Liner.

CUSTOMERS SHOULD KNOW:

Not tested on animals.

PRODUCT GROUP NUMBER: 4200

Shade #4262 available in Black Wardrobe Collection

INGREDIENTS:

ISODODECANE, MICA, POLYETHYLENE, BEHENYL
DIMETHICONE/BIS VINYL DIMETHICONE CROSSPOLYMER,
HYDROGENATED POLYCYCLOPENTADIENE, ACRYLATES
COPOLYMER, ISODECYL NEOPENTANOATE, PENTAERYTHRITYL
TETRAISOSTEARATE, HYDROXYSTEARIC/LINOLENIC/OLEIC
POLYGLYCERIDES, ETHYLENE/PROPYLENE COPOLYMER, CAPRYLYL
GLYCOL, DISTEARDIMONIUM HECTORITE, COPERNICIA CERIFERA
(CARNAUBA) WAX, BHT, PROPYLENE CARBONATE, DEHYDROACETIC
ACID, TOCOPHEROL. [+/- MAY CONTAIN: TITANIUM DIOXIDE (CI 77891),
IRON OXIDES (CI 77491), IRON OXIDES (CI 77492), IRON OXIDES (CI 77499),
RED 6 (CI 15850), CARMINE (CI 75470)].

LORD & BERRY

SETA
EYE SHADOW PRESSED POWDER

BLACK
WARDROBE
COLLECTION

CHARACTERISTICS:

Adorable and soft for a silk effect on the eyelids. Used to highlight evidence to the eyelids and to create effects of "chiaroscuro". They can be mixed in order to realize an endless colors combination that gives prominence to the eyes. The corrected combination of the colors can enormously increase eye expression.

UNIQUE QUALITIES:

- Soft and silk effect
- Ingredients for impalpable sensorial effect
- Adheres well to the skin

BENEFITS:

Long lasting thanks to micronized raw materials

HOW TO USE:

The following steps should be followed in the application of eyeshadow shades.

1. Using the Brush#0846 gently apply the base color to the entire lid from the inside to the outside corner and from the base of the lashes to the eyelid crease.
2. If the eyes need extra definition, a deeper shade is blended into the crease line. This gives depth to the eyes.
3. The brow bone is highlighted with a light shade. This gives the eyes a wide, open look. The colour is applied to the most prominent area and blended up towards the brow and down to where the contour curves down, toward the eyelid creases.

Before using them on the lids, always test the colours on the back of the hand to test the intensity. You can use even 3-4 colours, provided they are blended well. Remember pale tones emphasize, while deep sooty shades define.

GOES WELL WITH:

Smudgeproof Waterproof Eye Pencil, Lord & Berry Black Liners, Lord & Berry Brush.

CUSTOMERS SHOULD KNOW:

Not tested on animals.

PRODUCT GROUP NUMBER: 4500

Shade #4521 available in Black Wardrobe Collection

INGREDIENTS:

FOR SHADE 4501-4569: TALC, MICA, ALUMINUM STARCH OCTENYLSUCCINATE, OCTYLDODECYL STEAROYL STEARATE, DIMETHICONE, ZINC STEARATE, CYCLOMETHICONE, DEHYDROACETIC ACID, BHT, BUTYLPARABEN, ETHYLPARABEN, METHYLPARABEN, PROPYLPARABEN.[+/-MAY CONTAIN: TITANIUM DIOXIDE (CI 77891), IRON OXIDES (CI 77491), IRON OXIDES (CI 77492), RED 6 (CI 15850), IRON OXIDES (CI 77499), ULTRAMARINES (CI 77007), FERRIC FERROCYANIDE (CI 77510), BLUE 1 (CI 42090), YELLOW 5 (CI 19140), YELLOW 6 (CI 15985), RED 28 (CI 45410), MANGANESE VIOLET (CI 77742), ALUMINUM POWDER (CI 77000), SYNTHETIC FLUORPHLOGOPITE].

FOR SHADE 4575-4594: TALC, MICA, PHENYLTRIMETHICONE, ALUMINUM STARCH OCTEYLSUCCINATE, DIMETHICONE, OCTYL DODECYL STEAROYL STEARATE, ISOPROPYL MYRISTATE, BHA, BUTYLPARABEN. [+/-MAY CONTAIN: IRON OXIDES (CI 77491), IRON OXIDES (CI 77492), IRON OXIDES (CI 77499), MANGANESE VIOLET (CI 77742), TITANIUM DIOXIDE (CI 77891), RED 6 (CI 15850), RED 28 (CI 45410), BLUE 1 (CI 42090), RED 34 (CI 15880), YELLOW 6 (CI 15985), ULTRAMARINES (CI 77007), YELLOW 5 (CI 19140), FERRIC FERROCYANIDE (CI 77510)].



CHARACTERISTICS:

A glitter that creates a high-level sparkle effect on face, skin and hair.
Available in four different colors: Holo Silver, Silver, Bright Pink, Bright Coffee.



HOW TO USE:

Glitter can be applied directly to the skin or combined with products to create high-level glitter on all areas of the face, skin and hair.

EYES: use on the eye area with Duo Adhesive. Do not use as eye liner.

LIPS: use on the lips with Timeless Kissprof, Absolute and Vogue Lipsticks, 20100 Crayon Lipstick and Lipgloss.

FACE AND BODY: use the Mixing Base Only • One.

GOES WELL WITH:

Mixing Base Only • One, Timeless, Absolute, Vogue, Skin Lip Gloss, 20100 Crayon Lipstick, Stardust, Seta, #Reglam.

CUSTOMERS SHOULD KNOW:

IT - ATTENZIONE: Non utilizzare nel contorno occhi o labbra.

EN - CAUTION: Do not for use in the lip or eye area.

FR - ATTENTION: Ne pas utiliser sur le contour des yeux ou des lèvres.

DE - ACHTUNG: Nicht zur anwendung in lippen- oder augenpartie geeignet.

ARABIC - نى عىلأ وأه افشلا ةقطنم يى مدختسى ال: هى بنى

ECO-FRIENDLY

CAUTION: Keep away from children. This is not a toy.
Do not inhale

PRODUCT GROUP NUMBER: 500

INGREDIENTS:

POLYETHYLENE TEREPHTHALATE, POLYURETHANE-11. [+/- MAY CONTAIN: CI 77000 (ALUMINIUM POWDER), CI 77499 (IRON OXIDES), CI 77891 (TITANIUM DIOXIDE), CI 42090 (BLUE 1), CI 77492 (IRON OXIDES), CI 77510 (FERRIC AMMONIUM FERROCYANIDE), CI 15850 (RED 7)].

LORD & BERRY

LE PETIT LINER

MICRO PRECISION EYE LINER

BLACK
WARDROBE
COLLECTION

CHARACTERISTICS:

The new micro eyeliner pencil for an exceptional precise definition. Get a much more controlled make-up on your eyes using this smaller dimension eye pencil. The payoff is creamy, intense and defining.

Easy to handle and to carry on. A perfectly designed lead diameter with a balance of ingredients to allow comfort during application. The formula technology guarantees an immediate intense application with a soft and creamy final effect. We love this eye liner for its precise and easy definition: the new must have eye liner to contour your eyes.

The eye pencil comes in the box with a dedicated mini-sharpener.



Le Petit Liner Noir

QUALITIES & BENEFITS:

- Comfortable application
- Extruded in a wood micro-pencil
- Full and intense pay off
- Good balance between pay-off and precision
- High coverage
- Precise and easy definition
- Vitamin E with antioxidant properties

HOW TO USE:

For a precise tight-line:

- Start from the inner corner of your upper eyelid and sweep the pencil as close to your lash line as you can.

- Draw a thin line across your eyelid outwards until you are two thirds towards the outer corner, then lift and extend the line outwards and upwards to create the illusion of an almond-shaped eye.

For a smoky look:

- Line along the lash-line, then smudge and blend up toward bridge using Precision Eyeshadow Brush #846 (sold separately).

- Layer with a deep eyeshadow, then blend and diffuse using Blending Shadow Brush #842 (sold separately).

GOES WELL WITH:

All Lord & Berry Mascaras, Seta Eye Shadow, Stardust, #Reglam

CUSTOMERS SHOULD KNOW:

Talc Free
Preservatives Free
Paraben Free

PRODUCT GROUP NUMBER: 401 NOIR

INGREDIENTS:

HYDROGENATED PALM OIL, ETHYLHEXYL STEARATE, HYDROGENATED COCO-GLYCERIDES, HYDROGENATED VEGETABLE OIL, OZOKERITE, MICA, SORBITAN TRISTEARATE, LECITHIN, TOCOPHEROL, ASCORBYL PALMITATE, CITRIC ACID. [+/- MAY CONTAIN: CI 77891 (TITANIUM DIOXIDE), CI 77499 (IRON OXIDES), CI 77510 (FERRIC AMMONIUM FERROCYANIDE)].



Lips

LORD & BERRY

ULTIMATE
LIP LINER
PRO

CHARACTERISTICS:

ULTIMATE Lip Liner is the original Lord&Berry lip pencil: comfortable and easy-to-use in the round shaped barrel lip pencil whose formula is enriched with LXB complex to soften and protect lips. Line and define the lips with ULTIMATE Lip Liner and finish with a gloss or lipstick.



UNIQUE QUALITIES:

- Formula includes Macadamia oil and waterlily extracts
- Water resistant
- Highly blendable for more natural lining

BENEFITS:

- Round barrel pencil allows ease in handling
- Wide selection of colors that is very natural and easy to wear for a wide range of skin tones

HOW TO USE:

Line and define lips: complete your look with any Lord&Berry Lipstick

GOES WELL WITH:

Absolute Lipstick, Vogue Lipstick, 20100 Crayon Lipstick, Timeless

CUSTOMERS SHOULD KNOW:

Fragrance free
15 cm length

PRODUCT GROUP NUMBER: 3000

INGREDIENTS:

HIDROGENATED PALM OIL, HIDROGENATED COCO-GLYCERIDES, CAPRYLIC/CAPRIC TRIGLYCERIDE, MICA, HYDROXYLATED LANOLIN, CERA MICROCRYSTALLINA (MICROCRISTALLINE WAX), VP/EICOSENE COPOLYMER, PROPYLPARABEN, GLYCINE SOJA (SOYBEAN) OIL, RETINYL PALMITATE, TOCOPHERYL ACETATE, MACADAMIA TERNIFOLIA (MACADAMIA) SEED OIL, PROPYLENE GLYCOL DICAPRYLATE/DICAPRATE, TOCOPHEROL, ASCORBYL PALMITATE, LECITHIN, GLYCERYL STEARATE, GLYCERYL OLEATE, ALOE BARBADENSIS(ALOE VERA) EXTRACT, CITRIC ACID, NYMPHAEA ALBA (WATER LILY) FLOWER EXTRACT, DEHYDROACETIC ACID, BHT, METHYLPARABEN, SORBIC ACID, SODIUM DEHYDROACETATE. [+/ -MAY CONTAIN:TITANIUM DIOXIDE(CI 77891), RED 7 (CI 15850), IRON OXIDES(CI 77491), IRON OXIDES (CI 77492), IRON OXIDES (CI 77499), BLUE 1 (CI 42090), YELLOW 5 (CI 19140), YELLOW 6 (CI 15985), CARMINE (CI 75470), RED 6 (CI 15850)].

CHARACTERISTICS:

A new and enhanced formulation that now improves the original iconic ULTIMATE Lip Liner wood pencil. It is designed to outline, fill and define the natural shape of lips, it provides the ultimate trendy matte finish with an excellent and improved color payoff thanks to its enriched pigments. ULTIMATE Lip Liner is now designed a new and easy-to-carry on liner format.



UNIQUE QUALITIES:

- Formula includes Macadamia oil and waterlily extracts
- Water resistant
- Designed to outline, fill and define the natural shape of lips
- Enriched pigments

BENEFITS:

- Round barrel pencil allows ease in handling
- Trendy matte finish
- Excellent and improved color payoff
- Easy-to-carry on liner format

HOW TO USE:

Outline and fill lips: complete your look with any Lord&Berry Lipstick

GOES WELL WITH:

Absolute Lipstick, Vogue Lipstick, 20100 Crayon Lipstick, Timeless

CUSTOMERS SHOULD KNOW:

Fragrance free
No TEA
No silicones
12 cm length

PRODUCT GROUP NUMBER: 3000

INGREDIENTS:

HIDROGENATED PALM OIL, HIDROGENATED COCO-GLYCERIDES, CAPRYLIC/CAPRIC TRIGLYCERIDE, MICA, HYDROXYLATED LANOLIN, CERA MICROCRYSTALLINA (MICROCRISTALLINE WAX), VP/EICOSENE COPOLYMER, PROPYLPARABEN, GLYCINE SOJA (SOYBEAN) OIL, RETINYL PALMITATE, TOCOPHERYL ACETATE, MACADAMIA TERNIFOLIA (MACADAMIA) SEED OIL, PROPYLENE GLYCOL DICAPRYLATE/DICAPRATE, TOCOPHEROL, ASCORBYL PALMITATE, LECITHIN, GLYCERYL STEARATE, GLYCERYL OLEATE, ALOE BARBADENSIS(ALOE VERA) EXTRACT, CITRIC ACID, NYMPHAEA ALBA (WATER LILY) FLOWER EXTRACT, DEHYDROACETIC ACID, BHT, METHYLPARABEN, SORBIC ACID, SODIUM DEHYDROACETATE. [+/-MAY CONTAIN:TITANIUM DIOXIDE(CI 77891), RED 7 (CI 15850), IRON OXIDES(CI 77491), IRON OXIDES (CI 77492), IRON OXIDES (CI 77499), BLUE 1 (CI 42090), YELLOW 5 (CI 19140), YELLOW 6 (CI 15985), CARMINE (CI 75470), RED 6 (CI 15850)].

CHARACTERISTICS:

TIMELESS Kissproof® Lipstick is the essence of matte vibrancy and futuristic wear. A sensorial lip fluid that shapes lips with one-stroke of pure color. An innovative texture with an ultralight weight and an extremely thin coverage. It has an exceptional drying time that won't crack up on application. Timeless leaves smooth and nourished lips, it is a high comfort lipstick with transfer resistant finish. The synergistic combination of neem (*) oil, sesame oil and Indian frankincense essential oil offers antioxidant and a moisturizing complex which restores the lips hydrolipidic natural coverage. The unique applicator tip paints on with precision in one swipe, so you can wear modern color with confidence.



UNIQUE QUALITIES:

- Extreme wear
- Transfer resistant performances
- Vibrant matte finish
- Intense color
- Sensorial fluid touch
- Weightless and ultra thin film - "breathing" effect.

BENEFITS:

- Neem oil
- Sesame oil
- Indian frankincense essential oil
- Active ingredients for moisturizing, antioxidant properties

HOW TO USE:

Draw lip outline with the unique applicator tip then fill in color in one easy swipe of vivid color.

GOES WELL WITH:

Ultimate Lip Liner

CUSTOMERS SHOULD KNOW:

Formulated WITHOUT parabens, fragrance, D5 or talc. For best TIMELESS Kissproof (R) lipstick performance please keep lips nice and smooth before any application. Exfoliate if needed and wipe off any excess moisture on lips, apply a thin clean coat and let it completely dry for 3 - 5 minutes before rubbing lips together. If you rub your lips together during the drying process, it could cause the lipstick to dry incorrectly, therefore causing cracking and crumbles. Also, any extra coats during the day may cause cracking. If you wish to refresh, remove and reapply.

Care Recommendation: Our formula contains a softener drying agent to deliver the matte effect we all love. To extend the life of your Timeless Kissproof (R) Lipstick, it is recommended to close tightly the container after every use. Please keep away from direct sunlight and store it in a cool and dry place.

Kissproof™® is a Lord&Berry registered trademark

(*) a tropical Old World tree that yields mahogany like timber, oil, or medicinal product oils.

PRODUCT GROUP NUMBER: 6400

INGREDIENTS:

ISODECANE, MICA, OCTYLDODECANOL, HYDROGENATED STYRENE/ISOPRENE COPOLYMER, STEARALKONIUM Hectorite, DICALCIUM PHOSPHATE, ALCOHOL, SESAMUM INDICUM (SESAME) SEED OIL, WATER (AQUA), MELIA AZADIRACHTA (NEEM) SEED OIL, PENTAERYTHRITYL TETRA-DI-T-BUTYL HYDROXYHYDROCINNAMATE, BOSWELLIASERRATA OIL, BHT. [+/ -MAY CONTAIN: TITANIUM DIOXIDE (CI 77891), IRON OXIDE (CI 77491), YELLOW 6 (CI 15985), RED 7 (CI 15850), IRON OXIDE (CI 77492), IRON OXIDES (CI 77499), RED 6 (CI 15850), BLUE 1 (CI 42090), CARMINE (CI 75470)].

LORD & BERRY

ABSOLUTE
BRIGHT SATIN LIPSTICK

CHARACTERISTICS:

Absolute is a high pigmented lipstick that delivers a vibrant bright satin finish in combination with a pure color release. It glides on lips with a rich and weightless film.

Absolute is enriched with Avocado oil, Jojoba seed oil and Rose Fruit to offer hydration, anti-oxidant, anti-aging and nourishment properties to your lips.



UNIQUE QUALITIES:

- Vibrant bright satin finish
- Thin and weightless texture
- High comfort in time
- Full coverage
- High pigmented colors

BENEFITS:

- Jojoba oil acts as an excellent emollient, toner and revitalizing for dry and damaged lips
- Avocado oil provides elasticity and nourishment
- Rose Flower complex extract to support the lips natural cell turnover

HOW TO USE:

Start by lining the lips with Ultimate Lip Liner. Then apply Absolute with the #848 Perfect Lip Brush working from the center of the lips outwards. For a bolder finish, apply the lipstick directly on the lips.

GOES WELL WITH:

Ultimate Lip Liners, Silhouette, Active Spa, Lip Oil Potion.

CUSTOMERS SHOULD KNOW:

Not tested on animals
Paraben Free
Talc Free

PRODUCT GROUP NUMBER: 7430

INGREDIENTS:

POLYBUTENE, HYDROGENATED POLYISOBUTENE, OCTYLDODECANOL, POLYETHYLENE, CAPRYLIC/CAPRIC TRIGLYCERIDE, HYDROGENATED POLY(C6-14 OLEFIN), CERA MICROCRISTALLINA (MICROCRYSTALLINE WAX), SYNTHETIC WAX, STEARALKONIUM BENTONITE, MICA, DICALCIUM PHOSPHATE, PROPYLENE CARBONATE, SIMMONDSIA CHINENSIS (JOJOBA) SEED OIL, PERSEA GRATISSIMA (AVOCADO) OIL, ROSA MULTIFLORA (ROSE) FLOWER WAX, ETHYL VANILLIN, SYNTHETIC FLUOROPHLOGOPITE, SILICA, PENTAERYTHRITYL TETRA-DI-T-BUTYL HYDROXYHYDROCINNAMATE, TIN OXIDE, [+/- MAY CONTAIN: IRON OXIDES (CI 77499), IRON OXIDES (CI 77491), TITANIUM DIOXIDE (CI 77891), IRON OXIDES (CI 77492), RED 28 (CI 45410:2), RED 6 (CI 15850), YELLOW 5 (CI 19140), BLUE 1 (CI 42090), RED 6 (CI 15850), YELLOW 6 (CI 15985), CARMINE (CI 75470)].

LORD & BERRY

VOGUE MATTE LIPSTICK

CHARACTERISTICS:

Extraordinary balanced elegant matte formulation, with incredible sensorial satin feeling that envelops the lips with a luxurious comfort and glam. VOGUE glides on with a melting touch, releasing a thin, matte film that is both soft and light. Its pure pigments structure perfectly shapes the lips with an extraordinary payoff. VOGUE contains papaya and orchid extracts which deliver lip softening, hydrating and protective properties.



UNIQUE QUALITIES:

- Matte balmy finish with high comfort
- Paraben Free
- Fragrance free
- Extremely smooth and soft sensation
- Perfect adherence and pure color release
- Not sticky and doesn't dry on lips
- Fashion colors
- Papaya and orchid extracts: anti-oxidant, anti-inflammatory and anti-aging properties

BENEFITS:

- Weightless creamy film
- Triglycerides guarantee high comfort level
- Papaya extracts gives lips softener and elasticity
- Orchid extracts gives lips hydration and regeneration

HOW TO USE:

Apply in full on your lips.

GOES WELL WITH:

Ultimate Lip Liner, Silhouette, Lip oil Potion.

CUSTOMERS SHOULD KNOW:

Not tested on animals.

PRODUCT GROUP NUMBER: 7600

INGREDIENTS:

FOR SHADE 7601-08: CAPRYLIC/CAPRIC TRIGLYCERIDE, PENTAERYTHRITYL TETRAISOSTEARATE, CAPRYLIC/CAPRIC TRIGLYCERIDE, PENTAERYTHRITYL TETRAISOSTEARATE, ISONONYL ISONONANOATE, POLYETHYLENE, EUPHORBIA CERIFERA (CANDELLILLA) WAX, CERA MICROCRISTALLINA (MICROCRYSTALLINE WAX), NYLON-12, SILICA DIMETHYL SILYLATE, SYNTHETIC BEESWAX, DISTEARDIMONIUM HECTORITE, 12-HEXANEDIOL, CAPRYLYL GLYCOL, AROMA (FLAVOR), TOCOPHERYL ACETATE, DICALCIUM PHOSPHATE, PENTAERYTHRITYL TETRA-DI-T-BUTYL HYDROXYHYDROCINNAMATE, MICA, SODIUM SACCHARIN, OLEA EUROPAEA (OLIVE) FRUIT OIL, TROPOLONE, SIMMONDSIA CHINENSIS (JOJOBA) SEED OIL. [+/- MAY CONTAIN: RED 7 (CI 15850), RED 6 (CI 15850), TITANIUM DIOXIDE (CI 77891), IRON OXIDE (CI 77492), YELLOW 6 (CI 15985), IRON OXIDE (CI 77491), RED 28 (CI 45410), BLUE 1 (CI 42090), IRON OXIDE (CI 77499)]. **FOR SHADE 7611-12:** NEOPENTYL GLYCOL DICAPRYLATE/DICAPRATE, TRIMETHYLOLPROPANE TRIISOSTEARATE, DIMETHICONE, MICROCRYSTALLINE WAX (CERA MICROCRISTALLINA), POLYETHYLENE, POLYBUTENE, DIMETHICONE CROSSPOLYMER, SILICA, MICA, DICALCIUM PHOSPHATE, CARTHAMUS TINCTORIUS (SAFFLOWER) SEED OIL, ZEA MAYS (CORN) OIL, CARICA PAPAYA (PAPAYA) FRUIT EXTRACT, ORCHIS MASCULA (SALEP) FLOWER EXTRACT, PENTAERYTHRITYL TETRA-DI-T-BUTYL HYDROXYHYDROCINNAMATE, BHT, TOCOPHERYLACETATE. [+/- MAY CONTAIN: IRON OXIDES (CI 77491), IRON OXIDES (CI 77492), RED 7 (CI 15850), BLUE 1 (CI 42090), YELLOW 6 (CI 15985), RED 6 (CI 15850), TITANIUM DIOXIDE (CI 77891)].

LORD & BERRY

JAMAIS!
SHEER LIPSTICK

CHARACTERISTICS:

Jamais! Sheer Lipstick has a lightweight formula that delivers a comfortable, buildable and mirror like finish. As a triple action lipstick, it works to shine your lips to a brilliant finish while plumping and smoothing all in one. Jamais! is enriched with Sunflower Oil to offer hydration, anti-oxidant and nourishment properties to your lips. The shade range is designed to complement all skin tones.



QUALITIES & BENEFITS:

- Creamy and emollient texture
- Wet shiny finish effect
- Sheer to medium coverage formula
- Tocopheryl nicotinate ensures a plumping effect
- Sunflower Oil helps to achieve the smoothest finish possible
- Lightweight Triglyceride delivers true comfort and emolliency

HOW TO USE:

Apply Jamais! with the #848 Perfect Lip Brush working from the center of the lips outwards. For a bolder finish, apply the lipstick directly on the lips.

GOES WELL WITH:

Ultimate Lip Liners, Silhouette, Active Spa, Lip Oil Potion.

CUSTOMERS SHOULD KNOW:

Paraben free, silicones D4/D5 free, not tested on animals.

PRODUCT GROUP NUMBER: 7510

INGREDIENTS:

OCTYLDODECANOL, TRIMETHYLOLPROPANE TRIISOSTEARATE, POLYBUTENE, CERA MICROCRISTALLINA (MICROCRYSTALLINE WAX), CAPRYLIC/CAPRIC TRIGLYCERIDE, VP/HEXADECENE COPOLYMER, POLYETHYLENE, VP/EICOSENE COPOLYMER, TRIISODECYL TRIMELLITATE, STEARALKONIUM BENTONITE, MICA, PHYTOSTERYL ISOSTEARATE, PROPYLENE CARBONATE, HELIANTHUS ANNUUS (SUNFLOWER) SEED OIL UNSAPONIFIABLES, TOCOPHERYL NICOTINATE, PARFUM (FRAGRANCE), ASCORBYL PALMITATE, TOCOPHEROL, DICALCIUM PHOSPHATE, BHT, LINALOOL, LIMONENE, TIN OXIDE. [+/- MAY CONTAIN: CI 77891 (TITANIUM DIOXIDE), CI 77491 (IRON OXIDES), CI 77492 (IRON OXIDES), CI 42090 (BLUE 1), CI 19140 (YELLOW 5), CI 15985 (YELLOW 6), CI 15850 (RED 6), CI 15850 (RED 7), CI 45410 (RED 28)].

CHARACTERISTICS:

20100 Shiny Crayon Lipstick is a creamy lip color that provides a super soft texture. It glides on the lips with an intense color pay off and a smooth application. 20100 is enriched with oils and waxes complex that provides softening, soothing, hydration and nourishment to your lips. It is available in many different fashion colors and its shape is the favorite by make up Artists.



UNIQUE QUALITIES:

- Intense color pay off
- Texture enriched with oils and waxes complex
- Shiny and brilliant finish
- Soft and creamy touch
- Fashion colors range

BENEFITS:

- Easily glides onto lips
- Softening, soothing, hydration and nourishment
- Easy to carry along and quick to apply

HOW TO USE:

Apply all-over the lips.

Works best with Lord&Berry Jumbo sharpener (sold separately).

GOES WELL WITH:

Ultimate Lip Liner, Silhouette, Active Spa, Lip Oil Potion

CUSTOMERS SHOULD KNOW:

Not tested on animals

PRODUCT GROUP NUMBER: 7200

INGREDIENTS:

FOR SHADE 7263-77 (7278): ISOSTEARYL ISOSTEARATE, RICINUS COMMUNIS (CASTOR) SEED OIL, OZOKERITE, MYRISTYL LACTATE, DIPENTAERYTHRITYL HEXAHYDROXYSTEARATE/HEXASTEARATE/HEXAROSINATE, SUCROSE TETRASTEARATE TRIACETATE, CETYL ACETATE, PARAFFINUM LIQUIDUM (MINERAL OIL), COPERNICIA CERIFERA (CARNAUBA) WAX, BUTYL STEARATE, EUPHORBIA CERIFERA (CANDELILLA) WAX, ACETYLATED LANOLIN ALCOHOL, SYNTHETIC BEESWAX, AROMA (FLAVOR), ETHYL VANILLIN, BHT, DEHYDROACETIC ACID, MICA, PROPYLPARABEN, METHYLPARABEN. [+/- MAY CONTAIN: TITANIUM DIOXIDE (CI 77891), RED 6, RED 7, RED 6 (CI 15850), IRON OXIDES (CI 77491, CI 77492, CI 77499), YELLOW 6 (CI 15985), YELLOW 5 (CI 19140), BLUE 1 (CI 42090)].

FOR SHADE 7279-97: RICINUS COMMUNIS (CASTOR) SEED OIL, ISOSTEARYL ISOSTEARATE, OZOKERITE, MYRISTYL LACTATE, DIPENTAERYTHRITYL HEXAHYDROXYSTEARATE / HEXASTEARATE / HEXAROSINATE, SUCROSE TETRASTEARATE TRIACETATE, COPERNICIA CERIFERA (CARNAUBA) WAX, EUPHORBIA CERIFERA (CANDELILLA) WAX, PARAFFINUM LIQUIDUM (MINERAL OIL), BUTYL STEARATE, CAPRYLYL GLYCOL, SYNTHETIC BEESWAX, PARFUM (FRAGRANCE), ETHYL VANILLIN, BHT, TIN OXIDE, DEHYDROACETIC ACID, MICA, PROPYLPARABEN, METHYLPARABEN. [+/- MAY CONTAIN: TITANIUM DIOXIDE (CI 77891), RED 6, RED 7, RED 6 (CI 15850), IRON OXIDES (CI 77491, CI 77492, CI 77499), RED 27 (CI 45410), YELLOW 5 (CI 19140), BLUE 1 (CI 42090)].

LORD & BERRY

20100
MATTE CRAYON LIPSTICK

CHARACTERISTICS:

20100 Matte Crayon Lipstick glides on lips with a matte sensorial finish with a release of soft and smooth color. It's enriched with Vitamin E which delivers anti-oxidant, anti-inflammatory, hydration and suppleness properties. 20100 is a lipstick combined with the convenience of a pencil in a jumbo crayon. It is available in many different fashion colors and its shape is the favorite by make up Artists.



UNIQUE QUALITIES:

- Vitamin E
- Intense color pay off
- Sensorial matte finish
- Fashion colors range
- Orange Blossom fragrance

BENEFITS:

- Anti-oxidant, anti-inflammatory, hydration and suppleness properties
- Easily glides onto lips
- Soft and smooth touch
- Easy to carry along and quick to apply

HOW TO USE:

Apply all-over the lips. Works best with Lord&Berry Jumbo sharpener (sold separately).

GOES WELL WITH:

Ultimate Lip Liner, Silhouette, Active Spa, Lip Oil Potion

CUSTOMERS SHOULD KNOW:

Not tested on animals

PRODUCT GROUP NUMBER: 7800

Shade #7897 available in Black Wardrobe Collection

INGREDIENTS:

OCTYLDODECANOL, ISODECYL NEOPENTANOATE, EUPHORBIA CERIFERA (CANDELILLA) WAX, MICA, OCTYLDODECYL STEAROYL STEARATE, KAOLIN, CERA ALBA (BEESWAX), TALC, HYDROGENATED PALM KERNEL GLYCERIDES, POLYETHYLENE, ALUMINUM STARCH OCTENYLSUCCINATE, PENTAERYTHRITYL STEARATE/CAPRATE/CAPRYLATE/ADIPATE, PARFUM (FRAGRANCE), CAPRYLYL GLYCOL, HYDROGENATED PALM GLYCERIDES, DISODIUM STEAROYL GLUTAMATE, BHT, DEHYDROACETIC ACID, TOCOPHERYL ACETATE, ALUMINUM HYDROXIDE. [+/- MAY CONTAIN: TITANIUM DIOXIDE (CI 77891), IRON OXIDES (CI 77492), IRON OXIDES (CI 77491), RED 7 (CI 15850), IRON OXIDES (CI 77499), YELLOW 5 (CI 19140), YELLOW 6 (CI 15985), RED 28 (CI 45410), BLUE 1 (CI 42090)].

LORD & BERRY

20100

MAXIMATTE CRAYON LIPSTICK

CHARACTERISTICS:

20100 Maximatte Crayon Lipstick glides on lips with a matte sensorial finish with a release of soft and smooth color. It's enriched with Vitamin E which delivers anti-oxidant, anti-inflammatory, hydration and suppleness properties. 20100 Maximatte is a lipstick combined with the convenience of a wood pencil in a jumbo crayon.

It is available in different colors and its shape is the favorite by make up Artists.



UNIQUE QUALITIES:

- Vitamin E
- Intense color pay off
- Sensorial matte finish

BENEFITS:

- Anti-oxidant, anti-inflammatory, hydration and suppleness properties
- Easily glides onto lips
- Soft and smooth touch
- Easy to carry along and quick to apply

HOW TO USE:

Apply all-over the lips.

Works best with Lord&Berry Jumbo sharpener (sold separately).

GOES WELL WITH:

Ultimate Lip Liner, Silhouette, Active Spa, Lip Oil Potion.

CUSTOMERS SHOULD KNOW:

Not tested on animals
Paraben free
Fragrance free

PRODUCT GROUP NUMBER: 3400

INGREDIENTS:

HYDROGENATED POLYISOBUTENE, C12-13 ALKYL ETHYLHEXANOATE, POLYETHYLENE, HYDROGENATED COCO-GLYCERIDES, DICALCIUM PHOSPHATE, OZOKERITE, MICA, CERA ALBA (BEESWAX), TOCOPHERYL ACETATE, TOCOPHEROL, LECITHIN, ASCORBYL PALMITATE, GLYCERYL STEARATE, GLYCERYL OLEATE, CITRIC ACID, BHT.
[+/- MAY CONTAIN: TITANIUM DIOXIDE (CI 77891), IRON OXIDES (CI 77491), IRON OXIDES (CI 77492), IRON OXIDES (CI 77499), CARMINE (CI 75470), BISMUTH OXYCHLORIDE (CI 77163), RED 6 (CI 15850), RED 21 (CI 45380), RED 27 (CI 45410), RED 30 (CI 73360), BLUE 1 (CI 42090), YELLOW 5 (CI 19140), YELLOW 6 (CI 15985)]

CHARACTERISTICS:

A SKIN LIP GLOSS that glides on for a beautifully sheer color and luminous shine, delivering lip-queenching protection (from Vitamin E). Use the wand applicator to layer SKIN LIP GLOSS onto lips and build the level of shine you want from sheer to lacquered finish.



UNIQUE QUALITIES:

- Treatment Gloss. Lightweight formula and coat (shiny overcoat lipstick) to create more natural gloss effect.
- A lightweight gloss formula featuring sheer color with added glimmer, sparkle and pop.
- A unique lip gloss available in a wide variety of colors that can create a high gloss, finish or a subtle sheen.
- Designed to be worn on its own, over lip pencils or lipsticks, SKIN LIP GLOSS is packaged in a convenient bottle with a curved sponge tip applicator that provides a quick, smooth and even application.

BENEFITS:

- Rich selection of fashion colors
- Excellent luminosity sheer coverage

HOW TO USE:

Use the wand applicator to layer SKIN onto lips and build the level of shine you want from sheer shimmer to lacquered finish.

GOES WELL WITH:

Any lipsticks

CUSTOMERS SHOULD KNOW:

SKIN LIP GLOSS gives a natural looking gloss to the lips without being excessive.

PRODUCT GROUP NUMBER: 4800

INGREDIENTS:

RICINUS COMMUNIS (CASTOR) SEED OIL, POLYBUTENE, POLYGLYCERYL-2 ISOSTERATE DIMER DILINOLEATE COPOLYMER, ISOPROPYL LANOLATE, LANOLIN, OCTYL DODECANOL, FLAVOR (AROMA), GLYCERYL HYDROGENATED ROSINATE, METHYL HYDROGENATED ROSINATE, SILICA, PARAFFIN, MICA, BHT, METHYL PARABEN, ETHYL PARABEN, PROPYL PARABEN, BUTYL PARABEN, POLYETHYLENE TEREPHTHALATE, SYNTHETIC FLUORPHLOGOPITE, TALC, ALUMINA. [+/- MAY CONTAIN: RED 31 (CI 15800), RED 6 (CI 15850:1), RED 6 (CI 15850:2), YELLOW 6 (CI 15985:1), YELLOW 5 (CI 19140:1), BLUE 1 (CI 42090:2), RED 27 (CI 45410:1), RED 28 (CI 45410:2), CARMINE (CI 75470), IRON OXIDES (CI 77491), IRON OXIDES (CI 77492), IRON OXIDES (CI 77499), MANGANESE VIOLET (CI 77742), TITANIUM DIOXIDE (CI 77891)].



Colorless

CHARACTERISTICS:

Adorable and smooth for professionally defined lips, SILHOUETTE defines and shapes your lips. It is an universal lip liner that can easily be applied on its own with excellent neutral pay off and long lasting effect. Very comfortable to wear with additional benefits. Fine lines around the lips will be smoothed thanks to hydrolyzed wheat proteins that increase their volume after contact with moisture. Contains active ingredients that stimulate regeneration and firming of the skin.



UNIQUE QUALITIES:

- Soft and creamy
- Neutral payoff
- Anti feathering
- No fading
- Long lasting (more than 4 hours)
- Waterproof
- Smudgeproof
- No transfer
- Contains ceramide

BENEFITS:

- Unique combination of make up and treatment
- Universal lip liner
- Filler for micro lip lines thanks to vegetal filling spheres that contains dehydrated wheat proteins that swell in contact with lip and skin moisture to achieve moisturizing and smoothing effect
- Paraben free
- Mineral oil free
- Preservative free
- Not tested on animal
- Contains ceramide 3 and hyaluronic acid for nourishing and skin pampering.
- Dermatologically tested

HOW TO USE:

Use it on your lips as any other lip liner, apply around your lips before using a lipstick or a gloss.

GOES WELL WITH:

Any product of the Lord & Berry lip range.

CUSTOMERS SHOULD KNOW:

It is a treatment and make up product, not tested on animals and customer should use the Lord & Berry Mono Sharpener to sharpen this pencil. Do not use regular stationary sharpeners.

PRODUCT GROUP NUMBER: 6501

INGREDIENTS:

ISODODECANE, CYCLOPENTASILOXANE, SYNTHETIC WAX, POLYBUTENE, CERA ALBA (BEESWAX), CETERARYL BEHENATE, PENTAERYTHRITYL TETRAISOSTEARATE, DIMETHICONE/VINYL DIMETHICONE CROSSPOLYMER, PENTAERYTHRITYL TETRA-DI-T-BUTYL HYDROXYHYDROCINNAMATE, MICA, CERAMIDE-3, SODIUMHYALURONATE, SILICA, ISOCETETH-10, AQUA (WATER).

LORD & BERRY

ACTIVE SPA
LIP BALM AND PRIMER

CHARACTERISTICS:

Shield your lips against the drying effects of sun, wind, cold and pollution with a blissful transparent balm that delivers instant comfort, moisture and suppleness. Use ACTIVE SPA daily on bare lips to leave them comfortable and moisturized, or apply over lipstick for a moisturizing sheen.



UNIQUE QUALITIES:

- Protection, treatment and comfort
- Natural and slightly glossed finish
- Vitamin E anti-ageing action
- Formula infused with Shea Butter, Jojoba Oil, Palm Kernel Extracts, Cottonseed Oil Extracts and Rice Bran Extracts

BENEFITS:

- Provides highly treating and protective properties
- Versatile product that moisturises lips when worn alone or under lipstick as a primer

HOW TO USE:

Use as a nutrient base under color lip products. Can also be used alone day and night.

GOES WELL WITH:

Excellent base for all lip products.

CUSTOMERS SHOULD KNOW:

ACTIVE SPA is an essential lip treatment to keep lips soft and supple.

PRODUCT GROUP NUMBER: 1610

INGREDIENTS:

CERA MICROCRISTALLINA (MICROCRYSTALLINE WAX), CAPRYLIC/CAPRIC TRIGLYCERIDE, NEOPENTYL GLYCOL DICAPRILATE/DICAPRATE, POLYETHYLENE, HYDROGENATED POLYISOBUTENE, HYDROGENATED POLYDECENE, POLYBUTENE, BIS-DIGLYCERYL POLYACIDIPATATE-2, DIISOSTEARYL MALATE, SIMMONDSIA CHINENSIS (JOJOBA) SEED OIL, FLAVOR (AROMA), PROPYLPARABEN, TRIISOSTEARIN, HYDROGENATED COTTONSEED OIL, HYDROGENATED PALM KERNEL GLYCERIDES, ASCORBYL PALMITATE, TOCOPHEROL, SQUALANE, PROPYLENE GLYCOL DICAPRILATE/DICAPRATE, ORYZA SATIVA (RICE) BRAN WAX, LINALOOL, HYDROGENATED PALM GLYCERIDES, BUTYSPERMUM PARKII BUTTER (SHEA BUTTER) EXTRACT, HYDROGENATED CASTOR OIL, PHYTOSTEARYL ISOSTEARATE, MACADAMIA TERNIFOLIA (MACADAMIA) SEED OIL, NYMPHAEA ALBA (WATER LILY) FLOWER EXTRACT, RETINYL PALMITATE, TOCOPHERYL ACETATE, MICA.

CHARACTERISTICS:

Lip Oil Potion (LOP) is a highly advanced lip treatment oil that combines the actions of essential vegetable oils with those of the active ingredients for an advanced lip treatment base formula. The combinations of powerful actives and plants oil extracts work to condition lips, relieve dryness and chapping. LOP shields and protects against environmental elements, while increasing skin smoothness and elevating the appearance of the lip textures, shapes and volume.



UNIQUE QUALITIES:

- ARGAN OIL is considered an effective anti-aging oil due to properties such as the high levels of Vitamin E. Argan oil offers skin protection benefits such as tissue healing (scars), anti-inflammatory and disinfectant properties. It's an effective treatment for dry and chapped lips
- BORAGE SEED OIL is an effective emollient and decongestant for the treatment of irritated and scaly skin
- JOJOBA OIL with emollient properties
- SHEA BUTTER for nourishing and softness action
- VEGETABLE ORIGIN SQUALANE with anti-oxidant and rejuvenating properties
- PORTULACA PILOSA for increasing lips volume, hydration and softness

BENEFITS:

- Perfect night time treatment
- Hydration and softness
- Antioxidant to prevent collagen loss
- Protective formula soothes dry, chapped and scaly lips
- Nourishing oil
- Cushiony effect
- Short and long term benefits for the lips

HOW TO USE:

Wear Lip Oil Potion day or night for an intense lip treatment program.

CUSTOMERS SHOULD KNOW:

Paraben free
Not tested on animals
Vegan formula

PRODUCT GROUP NUMBER: 1612

INGREDIENTS:

PENTAERYTHRITYL TETRAISOSTEARATE, POLYBUTENE, OCTYLDODECANOL, BIS-DIGLYCERYL POLYACYLADIPATE-2, ARGANIA SPINOSA (ARGAN) KERNEL OIL, SQUALANE, BUTYROSPERMUM PARKII (SHEA BUTTER), SIMMONDSIA CHINENSIS (JOJOBA) SEED OIL, CETEARYL ETHYLHEXANOATE, AROMA (FLAVOR), CAPRYLYL GLYCOL, BORAGO OFFICINALIS SEED OIL, BHT, DEHYDROACETIC ACID, SORBITAN ISOSTEARATE, PORTULACA PILOSA EXTRACT, SUCROSE COCOATE, PALMITOYL TRIPEPTIDE-38.

LORD & BERRY

COLOR FIX EYE PRIMER

SMUDGEPROOF EYE SHADOW BASE

CHARACTERISTICS:

Color Fix Eye Primer has an innovative texture for a flawless eye shadow application. It keeps eye shadow color bright, fresh and long wearing. This primer glides onto the lids leaving a fresh and invisible film. The combination of Cotton Extract and Lotus Flower Extract offers moisturizing, softening, anti-inflammatory and anti-free radicals properties. The lightweight film ensures a perfect drytime and comfort in application. No smudge, no crease.



UNIQUE QUALITIES:

- Fresh and smooth texture
- Smudgeproof eye shadow base
- Keeps eye shadow color bright
- Long lasting properties
- Soft cushiony touch
- Lightweight film
- No smudge, no crease
- Perfect drytime and comfort in application

BENEFITS:

- Cotton Extract with moisturizing, softening and anti-inflammatory properties
- Lotus Flower Extract, a capillary protector to improve microcirculation, that offers also anti-free radicals properties
- Lightweight Oil with hydrating and emollient properties
- Lauroyl Lysine helps to give a smooth and long wearing eye shadow base

HOW TO USE:

Gently sweep a thin layer onto eyelids and blend it with fingertips. Color Fix Eye Primer dries in seconds. Follow with your favorite Lord&Berry eye shadow.

GOES WELL WITH:

Seta eye shadow, any Lord&Berry eye pencils and eye liners, Stardust, Velluto, #Reglam

CUSTOMERS SHOULD KNOW:

Paraben free
Fragrance free
Talc and D5 free
Not tested on animals

PRODUCT GROUP NUMBER: 1602

INGREDIENTS:

WATER (AQUA), MICA, SORBITAN ISOSTEARATE, CAPRYLIC/CAPRIC TRIGLYCERIDE, TITANIUM DIOXIDE (CI 77891), GLYCERIN, SILICA, LAUROYL LYSINE, HDI/TRIMETHYLOL HEXYLLACTONE CROSSPOLYMER, GLYCERYL STEARATE, PEG-100 STEARATE, POLYACRYLATE CROSSPOLYMER-II, ACRYLATES COPOLYMER, PHENOXYETHANOL, ETHYLHEXYLGLYCERIN, POTASSIUM SORBATE, SODIUM DEHYDROACETATE, IRON OXIDES (CI 77491), IRON OXIDES (CI 77492), CITRIC ACID, TIN OXIDE, IRON OXIDES (CI 77499), GOSSYPIUM HERBACEUM (COTTON) SEED OIL, NELUMBO NUCIFERA (LOTO) FLOWER EXTRACT.

CHARACTERISTICS:

Only-One is a colorless mixing base that gives you a versatility in the use. It creates a customized shiny look or, thanks to its wax formula, it can be used with Lord & Berry Stardust Eye Shadow Loose Powder and Glitter. For professional use.

**UNIQUE QUALITIES:**

- Customizable
- Provides a shiny finish
- Non-acnegenic
- For all skin types

HOW TO USE WITH:**STARDUST:**

- For best results, use Fluid Delicate to remove any excess oils from the skin.
- Scoop out the desired amount of Mixing Base Shine using a spatula and transfer it to a palette.
- Add desired pigments and mix together thoroughly until the desired color is achieved.
- The more pigment that is added, the more coverage you can achieve.
- Apply to the eyes, lips, face and/or body using fingertips, a sponge or brush.

GLITTER:

- For best results on eyes application first add Color Fix Eye Primer onto your lid.
 - Apply a thin film of Only-One Mixing Base onto your lid using fingertips or brush.
 - Tilt your head back to allow a more favorable angle for application; this also reduces the chances of glitter falling onto your face or into your eyes. If desired, place a tissue under your lower lashes to catch any stray glitter.
 - Close your eyes and apply Glitter using fingertips or brush
 - To brush off glitter that has fallen onto your face, close your eyes and use a large fan brush with a flicking motion to sweep any glitter away.
- Following the same instruction described above you can apply Glitter in other parts of the face and body.

ALONE FOR A SHINE EFFECT:

Dot Only-One where light would naturally hit your face (eyes, cheekbones, browbones) for a beautiful shiny complexion.

GOES WELL WITH: Stardust, Glitter

CUSTOMERS SHOULD KNOW:

Paraben free - silicones free - TEA free - fragrance free
- content vitamin E

PRODUCT GROUP NUMBER: 1613**INGREDIENTS:**

OCTYLDODECANOL, MICROCRYSTALLINE WAX,
POLYETHYLENE, TALC, CERA ALBA (BEESWAX), TOCOPHERYL
ACETATE.

LORD & BERRY

CREAM
GENTLE CREAM CLEANSER

CHARACTERISTICS:

Cream is formulated for all skin types with gentle vegetable ingredients. Suitable for sensitive skin.



UNIQUE QUALITIES:

- Organic chamomile extract
- Bio olive oil
- Rice bran oil

BENEFITS:

- Decongestant and anti-inflammatory properties
- Moisturizing properties, protective and emollient

HOW TO USE:

Apply and massage a small amount of product on the previously wet skin. Rinse thoroughly. It can be used daily

CUSTOMERS SHOULD KNOW:

Not tested on animals
Paraben free
Silicone free
Isotiazolidinone free

PRODUCT GROUP NUMBER: 807

INGREDIENTS:

AQUA (WATER), COCO-GLUCOSIDE, GLYCINE SOJA (SOYBEAN) OIL, CETEARYL ALCOHOL, COCAMIDOPROPYL BETAINE, ACRYLATES COPOLYMER, GLYCERIN, ORYZA SATIVA (RICE) BRAN OIL, GLYCERYL OLEATE, OLEA EUROPAEA (OLIVE) FRUIT OIL, PHENOXYETHANOL, COCONUTALCOHOL, POTASSIUM CETYL PHOSPHATE, HYDROXYACETOPHENONE, ORYZA SATIVA (RICE) STARCH, PARFUM (FRAGRANCE), CETEARETH-60 MYRISTYL GLYCOL, XANTHAN GUM, CHAMOMILLA RECUTITA (MATRICARIA) FLOWER EXTRACT, SODIUM HYDROXIDE, HYDROLYZED RICE PROTEIN, ACRYLATES/C10-30 ALKYL ACRYLATE CROSSPOLYMER.

LORD & BERRY

1 FLUID DELICATE

MICELLAR WATER

CHARACTERISTICS:

Fluid Delicate Micellar Water gently cleans and removes make up from face and eyes. This innovative formula, suitable for normal to dry and sensitive skin, removes impurities while respecting the skin balance. Soothing and decongestant active ingredients (chamomile extract, mallow extract and hamamelis virginiana) prevent the skin feeling of irritations.



UNIQUE QUALITIES:

- Gently soothes the skin as it gently removes make up and impurities from face and eyes
- Suitable for normal to dry and sensitive skin
- Chamomille extract with anti-inflammatory and decongestant properties
- Mallow extract with soothing, protective, refreshing and anti-redness properties.
- Hamamelis virginiana extract with decongestant, astringent, antioxidant and emollient properties.
- No rinse

BENEFITS:

- Acts in depth
- Revitalizes skin
- Soothing and decongestant effects
- Astringent, antioxidant and emollient properties
- Prevent the skin feeling of irritations.

HOW TO USE:

Soak a cotton pad and gently cleanse and remove make up.

CUSTOMERS SHOULD KNOW:

Not tested on animals
Paraben free
No isothiazolinone
Silicone free
Fragrance free
Alcohol free

PRODUCT GROUP NUMBER: 814

INGREDIENTS:

AQUA (WATER), BUTYLENE GLYCOL, PEG-6 CAPRYLIC/CAPRIC GLYCERIDES, PEG-7 GLYCERYL COCOATE, POLYSORBATE 20, GLYCERIN, MALVA SYLVESTRIS (MALLOW) LEAF WATER, HAMAMELIS VIRGINIANA (WITCH HAZEL) LEAF WATER, CHAMOMILLA RECUTITA (MATRICARIA) FLOWER EXTRACT, PHENOXYETHANOL, HYDROXYACETOPHENONE, DIPOTASSIUM PHOSPHATE, POTASSIUM PHOSPHATE, SODIUM HYDROXIDE.

LORD & BERRY

2 PHASES

WATERPROOF MAKE UP REMOVER

CHARACTERISTICS:

2 Phases is a treatment and effective make up remover for all types of make up, including waterproof and long lasting products. Especially designed for the Lord&Berry Kissproof, Smudgeproof and Waterproof products, 2 Phases is formulated with argan oil, rice brain oil, Black Currant oil and chamomile extract. This extra-gentle formula soothes and calms the skin leaving it feeling clean, moisturized and refreshed. Shake well to mix phases before usage and application.



UNIQUE QUALITIES:

- Gently soothes the skin as it quickly removes make up and impurities
- Non-greasy
- No rinse
- Argan oil provides nourishment to dry skin and prevents sagging skin
- Rice brain oil counteracts free radical formation and prevents skin aging
- Black Currant oil provides astringent properties, anti-inflammatory activity and prevents skin aging
- Chamomile extract with anti-inflammatory and decongestant properties

BENEFITS:

- Revitalizes skin
- Not irritating
- Soothing, nourishing, moisturizing and anti-aging effects
- Decongestant and anti-inflammatory properties

HOW TO USE:

Shake well before use to active the 2 Phases remover. Apply with a cotton pad on eyes and lips to remove make up.

CUSTOMERS SHOULD KNOW:

Not tested on animals
Fragrance Free
PEG Free
Isothiazolinone Free
Biguadine Free

PRODUCT GROUP NUMBER: 811

INGREDIENTS:

AQUA (WATER), CYCLOPENTASILOXANE, ISODODECANE, ISOPROPYL PALMITATE, BUTYLENE GLYCOL, PENTYLENE GLYCOL, ARGANIA SPINOSA (ARGAN) KERNEL OIL, ORYZA SATIVA (RICE) BRAN OIL, RIBES NIGRUM (BLACK CURRANT) SEED OIL, SARCOSINE, DIPOTASSIUM PHOSPHATE, SODIUM CHLORIDE, POTASSIUM PHOSPHATE, DISODIUM EDTA AZULENE.

CHARACTERISTICS:

SUBLIME is a 100% pure & organic Moroccan Argan Oil enriched with Vitamin E. Argan Oil is commonly used as a skin moisturiser to hydrate and soften the skin. It smooths fine lines and wrinkles, creating a youthful radiance. Containing a nourishing blend of fatty acids, Vitamin E and anti-oxidants, this natural moisture boosting remedy is perfect for all skin types and can be used on the complexion, hair, body and nails to keep you looking and feeling beautiful!



QUALITIES & BENEFITS:

- **Anti-Aging effects:** The Argan Oil not only acts as an effective moisturiser, but it can also give skin a youthful glow and reduce the visibility of wrinkles. Its anti-oxidant properties makes Sublime the ideal anti-aging product. It restores elasticity and leaves skin feeling plumper and softer.
- **Anti-oxidant effects:** The anti-oxidants in Argan Oil are known for their skin soothing properties. The gentle oil can be used to nourish and calm skin that is irritated and cracked, and is recommended to use on dry skin to help prevent tightness, flakiness or further discomfort.
- **Skin oiliness:** Some of us have a naturally oiler skin than others. Those who do often go out of their way to get rid of the oily sheen that can occur. Thanks to the Argan Oil's sebum reducing capabilities, Sublime can help decrease total sebum and regulate the skin's natural oils.
- **Acne:** Argan Oil can provide gentle nourishment for acne-prone skin types. Acne can be related to the skin's natural oil levels, and the non-greasy hydration Argan Oil provides can help to balance the complexion. Apply a few drops of Argan Oil after cleansing to lock nutrients into clean, dry skin.
- **Lips Moisturiser:** In cold or dry weather, lips can easily become dry and begin to crack. Argan Oil is the perfect nourishing remedy to soften and create lasting hydration for a plump pout.

HOW TO USE:

Simply smooth a few drops into your skin using gentle rubbing motions, as you would any face or body lotion. Perfect for all skin types, this oil can be used on the complexion, hair, body and nails.

GOES WELL WITH:

All Lord & Berry face products

CUSTOMERS SHOULD KNOW:

The black glass bottle filters out blue and ultra-violet light that can damage the formula and reduce effectiveness. This product is vegan, cruelty-free, dermatologist tested and formulated without fragrance and formaldehyde.

PRODUCT GROUP NUMBER: 1605

INGREDIENTS:

ARGANIA SPINOSA (ARGAN) KERNEL OIL, TOCOPHERYL ACETATE.

LORD & BERRY

4 NIGHT & DAY LASH & BROW GROWTH SERUM

CHARACTERISTICS:

4 NIGHT & DAY is a lash and brow growth serum for your night and day beauty routine. It's a plant-based emulsion with special active ingredients which guarantee nourishment and improvement to the eye lashes and brows growth. Apply it every night after your skin care rituals and use it in the mornings before your daily make up. Clinical tests confirm the efficacy of the active treatment on the length and density of hair follicles. Visible results in just four to six weeks.



QUALITIES & BENEFITS:

- It stimulates several molecules necessary to promote a healthy cycle of each hair follicle thanks to the presence of the vigna radiata sprout extract and the trifolium pratense sprout extract.
- It has a mix of algae which provides ascophyllum nodosum & asparagopsis armata extracts to strengthen and protect the integrity of capillaries.
- It has antioxidant and hydrating properties thanks to the presence of the black currant oil which provides also soothing and regenerating qualities.
- It has jojoba oil which is enriched with natural antioxidants that are effective as emollient.
- It releases panthenol to hydrate skin and stimulate epithelization.
- It increase the elasticity of the skin thanks to the jaluronic acid and its absorbent effect which captures the water inside the epidermis.
- It reinforces collagen by using the anti-inflammatory, antimutagen and antiedematous properties of the pine tree bark extracts.

HOW TO USE:

After removing your make up and cleansing your face, all that's required is taking a few extra minutes to apply the serum along the base of your eyelashes and brows. In the mornings, apply it before your daily make up. The small brush allows you to apply the product with precision on the lash line and brows.

GOES WELL WITH:

All Lord & Berry products.

CUSTOMERS SHOULD KNOW:

Peg free, fragrance free, preservative free, silicone free. Not tested on animals.

PRODUCT GROUP NUMBER: 1603

INGREDIENTS:

AQUA (WATER), DICAPRYLYL ETHER, GLYCERIN, CETEARYL GLUCOSIDE, SORBITAN OLIVATE, SORBITOL, ALOE BARBADENSIS LEAF JUICE, OLUS OIL (VEGETABLE OIL), PANTHENOL, ROSA CENTIFOLIA FLOWER WATER, SUCROSE STEARATE, RIBES NIGRUM (BLACK CURRANT) SEED OIL, SIMMONDSIA CHINENSIS (JOJOBA) SEED OIL, (TRIFOLIUM PRATENSE (CLOVER)/VIGNA RADIATA) SPROUT EXTRACT, ASPARAGOPSIS ARMATA EXTRACT, ASCOPHYLLUM NODOSUM EXTRACT, CAFFEINE, PINUS SYLVESTRIS BARK EXTRACT, SODIUM HYALURONATE, MEL (HONEY), INULIN LAURYL CARBAMATE, XANTHAN GUM, HYDROXYACETOPHENONE, CAPRYLYL GLYCOL



SCAN HERE FOR ACTIVE INGREDIENTS TEST

LORD & BERRY

SKIN CONTROL
MATTIFYING/BLURRING PRIMER

CHARACTERISTICS:

Prep and perfect your skin while extending the wear of your make up with Skin Control, the universal weightless real-life mattifying and blurring primer. It minimizes excess shine with a soft focus finish, blurs the appearance of pores and fine lines for a velvet finish on the skin.



QUALITIES & BENEFITS:

- Instant matt and blurring effect
- Minimization of small wrinkles and signs of aging
- Good adhesion and uniformity properties
- Minimization of pores
- For all skin types

HOW TO USE:

- Apply the product directly onto the skin and gently massage until skin feels smooth to the touch. A little goes a long way.
- Use a rice-sized amount for the whole face.
- Use alone to control shine and to blur imperfections or before your foundation as a primer.
- Apply over makeup for on-the-go touch-ups and to lock-in makeup throughout the day.

GOES WELL WITH:

All Lord & Berry products

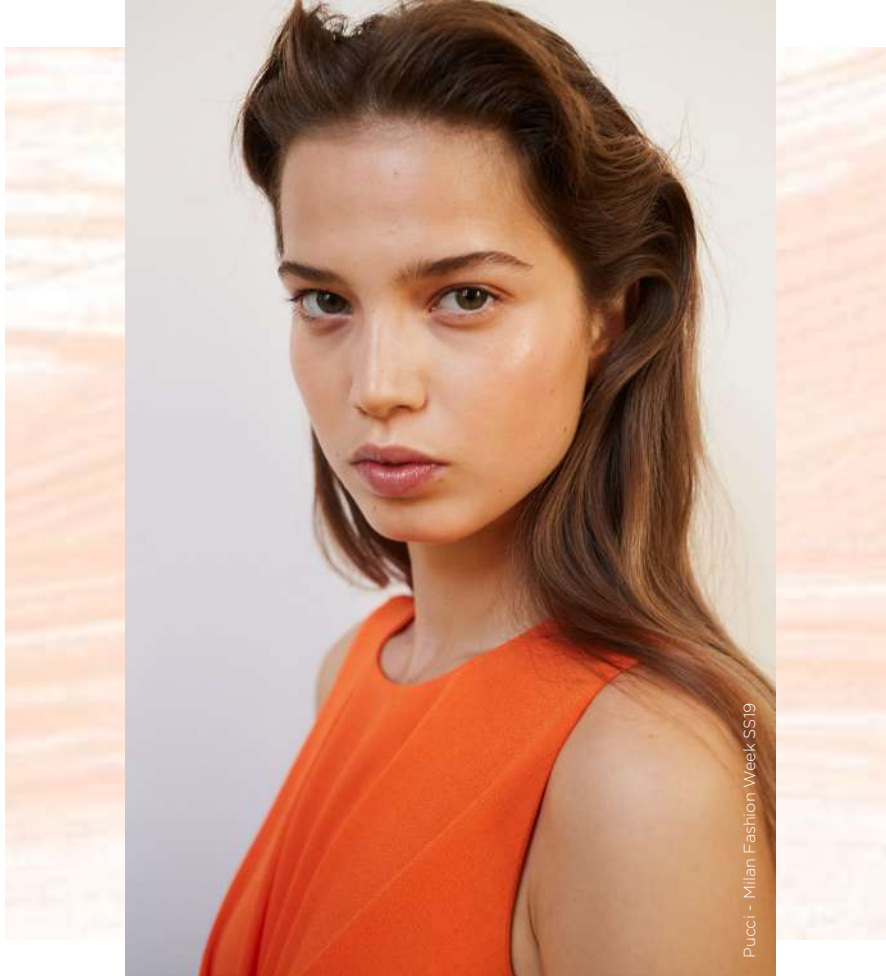
CUSTOMERS SHOULD KNOW:

Paraben free
Synthetic fragrances free
Mineral oil free
Sulfate detergents free
Urea, tea or dea free
Cruelty free

PRODUCT GROUP NUMBER: 1604 UNIVERSELLE

INGREDIENTS:

POLYMETHYLSILSESQUIOXANE, DIMETHICONE, ISONONYL ISONONANOATE, HYDROGENATED POLYISOBUTENE, VINYL DIMETHICONE/METHICONE SILSESQUIOXANE CROSSPOLYMER, C30-45 ALKYLDIMETHYLSILYL POLYPROPYLSILSESQUIOXANE, CAPRYLYL GLYCOL, PHENOXYETHANOL, SYNTHETIC WAX, HEXYLENE GLYCOL, OCTYLDODECYL STEAROYL STEARATE, OCTYLDODECANOL, TALC, BHT, TITANIUM DIOXIDE (CI 77891), CARMINE (CI 75470), IRON OXIDES (CI 77491).



Face

LORD & BERRY

LUMINIZER
HIGHLIGHTER STICK

CHARACTERISTICS:

A satiny-gold highlighter to add a subtle glow. Create a radiant, dewy complexion for an ethereal glow that is perfectly alluring on all skintones with this iconic Luminizer highlighter. Use it as a spot highlighter over make up. Dot and blend Luminizer where light would naturally hit your face (the cheekbones, browbones, down your nose, and on your cupid's bow) for a beautiful, glowing complexion.



UNIQUE QUALITIES:

- High blendability
- Paraben free
- Soft and silky formula

BENEFITS:

- Add subtle glow
- Illuminates and evens the skin tone

HOW TO USE:

Dot Luminizer where light would naturally hit your face (the cheekbones, browbones, down your nose, and on your cupid's bow) for a beautiful, glowing complexion. Then blend with fingertips to lift and contour the face.

GOES WELL WITH:

Active SPA, Flawless and Mascare.

CUSTOMERS SHOULD KNOW:

Not tested on animals.

PRODUCT GROUP NUMBER: 1152

INGREDIENTS:

OCTYL DODECANOL, ISONONYL ISONONANOATE, ALUMINUM STARCH OCTENYL SUCCINATE, MICA, BIS-DIGLYCERYL POLYACYLADIPATE-2, CERESIN, MICROCRYSTALLINE WAX (CERA MICROCRISTALLINE), COPERNICIA CERIFERA (CARNAUBA) WAX, CERA ALBA (BEESWAX), PHENOXYETHANOL, TROPOLONE, PARFUM (FRAGRANCE). [+/- MAY CONTAIN: TITANIUM DIOXIDE (CI 77891), IRON OXIDE (CI 77491, CI 77492, CI 77499), ULTRAMARINE (CI 77007)].

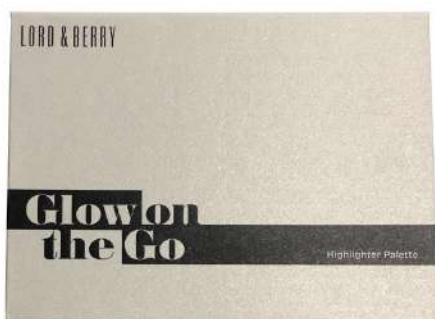
LORD & BERRY

GLOW ON THE GO

HIGHLIGHTER PALETTE

CHARACTERISTICS:

Featuring four shimmer finish highlighting powders, Glow On the Go is the ideal way to customize your glow. The unique, light-reflecting formula can be applied wet or dry for a luminous flush and is easy to blend for a subtle, natural radiance. Use shades on the face, eyes and body individually or layer them together to create a custom glow and intense luminosity. Glow on the go palette contains 4 shimmer highlighting shades in Midnight moon (white gold), Ethereal (gold), Cashmere (icy pink), Desire (bronze).



UNIQUE QUALITIES:

- Creamy effect
- Wet & dry texture
- Natural oils
- Vitamin E

BENEFITS:

- Blendable texture
- Antioxidant properties
- Moisturizing features

HOW TO USE:

Customize your glow by layering shades of highlighters to illuminate the cheekbones, Cupid's bow, bridge of the nose, brow bones, and décolleté.

Wear each shade alone or layer them together for a multi-dimensional look.

Use the soft, stippling brush #837 (sold separately) to build your desired radiance.

GOES WELL WITH:

All face products: foundation, blush, and bronzer. Seta and #Reglam to increase the highlighter intensity.

CUSTOMERS SHOULD KNOW:

- Paraben Free
- Gluten Free
- Fragrance Free
- Sulfates Free
- Phthalates Free
- Not Tested On Animals

PRODUCT GROUP NUMBER: 1154

INGREDIENTS:

TALC, MICA, CALCIUM SODIUM BOROSILICATE, DIMETHICONE, MAGNESIUM STEARATE, OCTYLDODECYL STEAROYL STEARATE, CAPRYLIC/CAPRIC TRIGLYCERIDE, TOCOPHERYL ACETATE, CERA ALBA (BEESWAX), DIMETHICONOL, SODIUM DEHYDROACETATE, PHENOXYETHANOL, TROPOLONE, TIN OXIDE. [+/- MAY CONTAIN: CI 77891 (TITANIUM DIOXIDE), CI 77491 (IRON OXIDES), CI 77492 (IRON OXIDES), CI 77499 (IRON OXIDES), CI 77742 (MANGANESE VIOLET), CI 77007 (ULTRAMARINES), CI 77510 (FERRIC AMMONIUM FERROCYANIDE), CI 42090 (BLUE 1), CI 19140 (YELLOW 5), CI 75470 (CARMINE), CI 15850 (RED 7), CI 15850 (RED 6)].

LORD & BERRY

STROBING
HIGHLIGHTER PENCIL

CHARACTERISTICS:

A pink highlighter to add a subtle glow. Create a radiant, dewy complexion for an ethereal glow that is perfectly alluring on all skintones with this iconic Strobing Pencil. Use it for highlighting cheekbones, the inner corners of the eyes, the cupid's bow or brow bones—any feature you want to play up.



UNIQUE QUALITIES:

- High blendability
- Vitamin C
- Vitamin E
- Soft and smooth formula
- Intense color release
- Highlighter in a wood pencil

BENEFITS:

- Antioxidant properties
- Add subtle glow
- Long wearing

HOW TO USE:

Dot Strobing Pencil where light would naturally hit your face (the cheek bones, brow bones, down your nose, and on your cupid's bow) for a beautiful, glowing complexion. Then blend it with fingertips to lift.

GOES WELL WITH:

Active SPA, Flawless, Cream Foundation, Blusher, Sculpt&Contour, Brow products and MasCare.

CUSTOMERS SHOULD KNOW:

Not tested on animals.
Paraben free.

PRODUCT GROUP NUMBER: 1153

INGREDIENTS:

MICA, HYDROGENATED COCO-GLYCERIDES, TRIETHYLHEXANOIN, TITANIUM DIOXIDE (CI 77891), CERA ALBA (BEESWAX), RICINUS COMMUNIS (CASTOR) SEED OIL, DIPENTAERYTHRITYL HEXAHYDROXYSTEARATE / HEXASTEARATE / HEXAROSINATE, COPERNICIA CERIFERA (CARNAUBA) WAX, POLYMETHYLMETHACRYLATE, OZOKERITE, IRON OXIDES (CI 77491), TIN OXIDE, LECITHIN, TOCOPHEROL, ASCORBYL PALMITATE, CITRIC ACID.

LORD & BERRY

ALL OVER
HIGHLIGHTING LOOSE POWDER

CHARACTERISTICS:

ALL OVER face & body powder highlights your complexion with a touch of radiance. It allows for versatile application with customizable levels of intensity. Just dust it where the light naturally hits your face, including the forehead, cheeks, browbones, and the bridge of your nose.



QUALITIES & BENEFITS:

- Highlight your complexion
- Safe for use on the eyes, lips, skin and body
- For all skin tones and types
- Customizable levels of intensity

HOW TO USE:

- Lightly pick up ALL OVER with your favorite Brush and tap away any excess.
- For the Face: Apply ALL OVER with the Brush #836 (sold separately) onto the high points of the face, such as the upper cheek plane, Cupid's bow, forehead, center of the brows, ball of the nose, and above the brow arch.
- For the Eyes: Apply ALL OVER with the Brush #842 (sold separately) onto the browbone, the inner corner of the eye, and the center of the lid.
- For the Body: Apply ALL OVER with the Brush #835 (sold separately) onto the collarbone, décolletage, and the tops of the shoulders for a luminous glow.
- Can be used dry or mixed with Only•One or 3 Sublime Pure Argan Oil.

GOES WELL WITH:

Only•One and 3 Sublime Moroccan Argan Oil for an extra bright effect.

All Lord & Berry products

CUSTOMERS SHOULD KNOW:

Silicone free

Vegan

Cruelty Free

PRODUCT GROUP NUMBER: 8310

INGREDIENTS:

TALC, ALUMINUM STARCH OCTENYLSUCCINATE, DIMETHICONE, MICA, ZINC STEARATE, PARFUM (FRAGRANCE), BHA, DEHYDROACETIC ACID, BUTYLPARABEN, [+/- MAY CONTAIN: IRON OXIDES (CI 77491), IRON OXIDES (CI 77492), IRON OXIDES (CI 77499), RED 6 (CI 15850), MANGANESE VIOLET (CI 77742), TITANIUM DIOXIDE (CI 77891)]

LORD & BERRY

SOFT TOUCH FLUID CONCEALER

CHARACTERISTICS:

A lightweight fluid concealer that provides light to medium coverage with a comfortable, bright natural finish. Its formula is enriched with Soft Focus pearls, Vitamin E and Argan Oil. Soft focus pearls reflect light to minimize the appearance of fine lines and blemishes. Its high-performing, water-resistant technology covers every skin imperfections as dark circles, broken capillaries and redness.



UNIQUE QUALITIES:

- Brightens dark areas, broken capillaries and redness
- Water-resistant
- Soft focus pearls
- Vitamin E
- Argan Oil

BENEFITS:

- Comfortable and bright natural finish
- Hydration and softness
- Anti-oxidant effect
- Minimize the appearance of fine lines and blemishes

HOW TO USE:

Use pre-foundation or on its own.

CUSTOMERS SHOULD KNOW:

Not tested on animals

PRODUCT GROUP NUMBER: 1200

INGREDIENTS:

AQUA (WATER), CYCLOPENTASILOXANE, ETHYLHEXYL METHOXYCINNAMATE, PROPYLENE GLYCOL, POTASSIUM CETYL PHOSPHATE, SQUALANE, BEHENETH-30, ZINC STEARATE, MYRISTYL ALCOHOL, PHENOXYETHANOL, GLYCERIN, GLYCERYL ISOSTEARATE, BIS-PEG-18 METHYL ETHER DIMETHYL SILANE, SILICA, POLYACRYLAMIDE, GLYCERYL STEARATE, METHYLPARABEN, PROPYLPARABEN, HYDROGENATED PALM KERNEL GLYCERIDES, C13-14 ISOPARAFFIN, PARFUM (FRAGRANCE), HYDROGENATED PALM GLYCERIDES, CARBOMER, CELLULOSE GUM, CETEARYL ALCOHOL, CETEARYL GLUCOSIDE, MICA, PENTAERYTHRITYL TETRA-DI-T-BUTYL HYDROXYHYDROCINNAMATE, RUBUS IDAEUS (RASPBERRY) SEED OIL, TOCOPHERYL ACETATE, XANTHAN GUM, HEXYLDECANOL, SODIUM HYDROXIDE, LAURETH-7, BENZYL SALICYLATE, ALPHA ISOMETHYL IONONE, LINALOOL, EUGENOL, PHOENIX DACTYLIFERA (DATE PALM) SEED EXTRACT, BUTYLPHENYL METHYLPROPIONAL, ISOEUGENOL, HYDROXYCITRONELLAL, AMYL CINNAMAL, LIMONENE, GERANIOL, CITRONELLOL, BENZYL ALCOHOL. [+/- MAY CONTAIN: IRON OXIDE (CI 77491), IRON OXIDE (CI 77492), IRON OXIDE (CI 77499), TITANIUM DIOXIDE (CI 77891)].

LORD & BERRY

FLAWLESS
CREAMY CONCEALER

CHARACTERISTICS:

Moisture-rich concealer is formulated in a light texture that provides medium coverage with a comfortable, yet not oily finish. Highly pigmented Flawless totally hides under-eye circles, discolorations, blemishes and imperfections.



UNIQUE QUALITIES:

- Vegetable Squalene with emollient and nourishing properties that normalizes skin desquamation and protects the capillaries
- Jojoba oil, Vitamin E, B2 and B3
- Rice bran oil

BENEFITS:

- Hide dark circles, discolorations, blemishes and imperfections
- Light texture highly pigmented
- Anti-aging due to Vitamin E
- Moisturizing, revitalizing and soothing for irritated skin

HOW TO USE:

Apply under eye and on skin imperfections.
You may use a brush to blend.

CUSTOMERS SHOULD KNOW:

Paraben free
Fragrance free
Not tested on animals

PRODUCT GROUP NUMBER: 1500

INGREDIENTS:

CAPRYLIC/CAPRIC TRIGLYCERIDE, OCTYLDODECANOL, MICA, EUPHORBIA CERIFERA (CANDELILLA) WAX, COPERNICIA CERIFERA (CARNAUBA) WAX, SQUALANE, POLYETHYLENE, DISTEARDIMONIUM HECTORITE, ORYZA SATIVA (RICE) BRAN OIL, SIMMONDSIA CHINENSIS (JOJOBA) SEED OIL, CAPRYLYL GLYCOL, PROPYLENE CARBONATE, SILICA, TOCOPHERYL ACETATE, BHT, DEHYDROACETIC ACID. [+/- MAY CONTAIN: IRON OXIDES (CI 77492), IRON OXIDES (CI 77491), TITANIUM DIOXIDE (CI 77891), IRON OXIDES (CI 77499)].

LORD & BERRY

CONCEAL-IT
STICK CONCEALER

CHARACTERISTICS:

CONCEAL-IT is a glides on effortlessly offering an even application for a luxurious, flawless finish and moisture to the skin. CONCEAL-IT provides medium, buildable coverage to hide minor flaws, dark circles, blemishes and fine lines. It is available in different shades with a package designed for easy and quick use.



UNIQUE QUALITIES:

- Macadamia nut oil and waterlily extracts
- Formula stays in place
- Resists heat, long lasting
- Concealer and foundation stick

BENEFITS:

- Practical packaging
- Excellent coverage, use it as a base for eye make up
- Very rich formulation for small dose usage

HOW TO USE:

Apply under eye up to lower lashes and most importantly on innermost corner of the eye. You may use the ring finger or a synthetic fibre brush to blend.

GOES WELL WITH:

Active Spa and Conceal-It are the perfect pair to create a make up base.

CUSTOMERS SHOULD KNOW:

A stick concealer is one of the most preferred.

PRODUCT GROUP NUMBER: 8800

INGREDIENTS:

PENTAERYTHRITYL TETRAISOSTEARATE, DICAPRYLYL ETHER, OZOKERITE, OCTYLDODECYL STEAROYL STEARATE, ETHYLHEXYL PALMITATE, ISODECYL NEOPENTANOATE, EUPHORBIA CERIFERA (CANDELILLA) WAX, SUCROSE TETRASTEARATE TRIACETATE, TALC, BHT, TOCOPHERYL ACETATE, METHYLPARABEN, PROPYLPARABEN, RETINYL ACETATE, MACADAMIA TERNIFOLIA (MACADAMIA) SEED OIL. [+/- MAY CONTAIN: TITANIUM DIOXIDE (CI 77891), IRON OXIDES (CI 77492), IRON OXIDES (CI 77491), IRON OXIDES (CI 77499), YELLOW 5 (CI 19140)].

LORD & BERRY

CREAM FOUNDATION

FLUID FOUNDATION

CHARACTERISTICS:

CREAM FOUNDATION is a long lasting emulsion with high coverage. It has a silky finish and it is formulated to allow an high blendability product. CREAM FOUNDATION is suitable for all skin types and contains antioxidants, moisturizers, UVA-UVB filters and anti-pollution extracts. This long lasting formula is available in a wide range of colors and contains emollients to help moisturize and condition the skin. Available in 50 ml bottle.



UNIQUE QUALITIES:

- Easy to apply, smooth uniform coverage
- Water-resistant
- Complete coverage
- High-tech coated pigments
- With active moisturizers and skin protection
- Flawless
- With Hyaluronic acid

BENEFITS:

- A shine controlling
- Hides imperfections and evens out skin tone
- The result is flawless and lasts for hours
- Antioxidant Vitamin E
- With Argan oil and Phytosqualano nutrient oil

HOW TO USE:

Apply a maximum of one or two layers to the whole face with the sponge. Apply a single, lighter layer around the eyes (too much will accentuate fine lines). For even application, avoid applying the foundation over rich, oil-based face creams.

CUSTOMERS SHOULD KNOW:

Nozzle may be sealed: punch nozzle with a pin to allow flow.

PRODUCT GROUP NUMBER: 8600

INGREDIENTS:

SHADES: 8619-24: AQUA (WATER), CYCLOPENTASILOXANE, TALC, SQUALANE, CETYL PEG/PPG-10/1 DIMETHICONE, GLYCERIN, PARAFINUM LIQUIDUM (MINERAL OIL), ETHYLHEXYL METHOXYCINNAMATE, POLYGLYCERYL-4 ISOSTEARATE, DISTEARDIMONIUM HECTORITE, PHENOXYETHANOL, PANTENOL, SODIUM DEHYDROACETATE, TOCOPHERYL ACETATE, METHICONE/DIMETHICONE COPOLYMER, DISODIUM EDTA, TROPOLONE, DIPEPTIDE DIAMINO BUTYROYL BENZYLAMIDE DIACETATE, SODIUM HYALURONATE, PARFUM (FRAGRANCE). [+/- MAY CONTAIN: TITANIUM DIOXIDE (CI 77491), IRON OXIDE (CI 77491), IRON OXIDE (CI 77492), IRON OXIDE (CI 77499)]. **SHADES: 8610, 8629-31:** AQUA (WATER), CYCLOPENTASILOXANE, TALC, SQUALANE, CETYL PEG/PPG-10/1 DIMETHICONE, PARAFINUM LIQUIDUM (MINERAL OIL), ETHYLHEXYL METHOXYCINNAMATE, POLYGLYCERYL-4 ISOSTEARATE, GLYCERIN, DISTEARDIMONIUM HECTORITE, PHENOXYETHANOL, HYDROGEN DIMETHICONE, TOCOPHERYL ACETATE, SODIUM DEHYDROACETATE, ARGANIA SPINOSA (ARGAN) KERNEL OIL, SODIUM HYALURONATE, ACRYLATES COPOLYMER, DISODIUM EDTA, ALUMINIUM HYDROXIDE, TROPOLONE, PARFUM (FRAGRANCE). [+/- MAY CONTAIN: TITANIUM DIOXIDE (CI 77491), IRON OXIDE (CI 77491), IRON OXIDE (CI 77492), IRON OXIDE (CI 77499)].

LORD & BERRY

PERFECT SKIN
FOUNDATION STICK

CHARACTERISTICS:

Perfect Skin foundation is designed to look and feel like skin for the most natural- looking finish. The soft-matte finish and creamy texture layer easily for medium to buildable coverage. The unique complex of Oak stem cells, Olive oil, Argan oil, Hyaluronic acid and Vitamin E deeply moisturize, soothe and protect the skin. Ideal for all skin types.



UNIQUE QUALITIES:

- **OAK STEM CELLS:** to implement the regenerative and stimulating process of cells with anti-aging properties
- **OLIVE OIL:** to provide anti-oxidant and anti-inflammatory properties
- **ARGAN OIL:** to give anti-aging, anti-inflammatory and disinfectant properties
- **HYALURONIC ACID:** to sustain the natural process of collagen cross-linking. To provide anti-aging properties.
- **VITAMIN E:** to support the natural antioxidant protection and the skin from environmental damages while helping to improve the appearance of smoothness and evenness.

BENEFITS:

- Antioxidant to prevent collagen loss
- Moisturizing and soothing benefits
- Protection and nourishment to the skin
- Regenerative and anti-aging properties

HOW TO USE:

Apply Perfect Skin starting from the center of the face : nose, chin and forehead.

Blend outward using fingers or the foundation brush #838 (sold separately).

To set foundation, control shine and lengthen wear, apply a sheer powder using a powder brush (#836 sold separately) or a velvet powder puff (#9102 sold separately).

CUSTOMERS SHOULD KNOW

Paraben Free - Gluten Free - Sulfates free - Phthalates free - Not tested on animals

PRODUCT GROUP NUMBER: 8720

INGREDIENTS:

OCTYLDODECANOL , ETHYLHEXYL PALMITATE, ALUMINUM STARCH OCTENYLSUCCINATE, TALC, OZOKERITE, CERA ALBA (BEESWAX), EUPHORBIA CERIFERA (CANDELILLA) WAX, CERA MICROCRISTALLINA (MICROCRYSTALLINE WAX), POLYETHYLENE, TOCOPHERYL ACETATE, ARGANIA SPINOSA (ARGAN) KERNEL OIL, OLEA EUROPAEA (OLIVE) FRUIT OIL, AQUA (WATER), OAK ROOT (QUERCUS ROBUR) EXTRACT , LECITHIN, TOCOPHEROL, ASCORBYL PALMITATE, CITRIC ACID, OCTOCRYLENE, PHENOXYETHANOL, TROPOLONE, PARFUM (FRAGRANCE).
[+/- MAY CONTAIN: CI 77891 (TITANIUM DIOXIDE), CI 77491 (IRON OXIDES), CI 77492 (IRON OXIDES), CI 77499 (IRON OXIDES), CI 77742 (MANGANESE VIOLET), CI 77007 (ULTRAMARINES), CI 77510 (FERRIC AMMONIUM FERROCYANIDE), CI 42090 (BLUE 1), CI 19140 (YELLOW 5), CI 75470 (CARMINE), CI 15850 (RED 7), CI 15850 (RED 6)].

LORD & BERRY

LOOSE POWDER

FINISHING TOUCH

CHARACTERISTICS:

LOOSE POWDER evens out your skin and sets your make up for a perfect matte finish available in stardust formula frost as well.



UNIQUE QUALITIES:

This formula is ideal to set the foundation with a transparent finish that lasts all day long.

BENEFITS:

Micronized pigments and talc render colour purity and an ultra silky, soft feeling application.

HOW TO USE:

Apply the powder on its own for a very natural look or over foundation for a more sophisticated result.

CUSTOMERS SHOULD KNOW:

The finish is velvety matte and the coverage is sheer-light. The range is unique, encompassing colorless to complexion-enhancing, colour-balancing shades.

PRODUCT GROUP NUMBER: 8300

INGREDIENTS:

TALC, ALUMINUM STARCH OCTENYLSUCCINATE, DIMETHICONE, MICA, ZINC STEARATE, PARFUM (FRAGRANCE), BHA, DEHYDROACETIC ACID, BUTYLPARABEN. [+/- MAY CONTAIN: IRON OXIDES (CI 77491), IRON OXIDES (CI 77492), IRON OXIDES (CI 77499), RED 6 (CI 15850), MANGANESE VIOLET (CI 77742), TITANIUM DIOXIDE (CI 77891)].

LORD & BERRY

PRESSED POWDER

CHARACTERISTICS:

A silky soft and light powder texture covers imperfections with a luminous and even veil of colour. This formula gives it its softness and natural matte. The fine texture is very pleasant to the touch, soft on the face, for a maximum comfort.



UNIQUE QUALITIES:

- A powder for amazing natural coverage
- Formulated to minimize the appearance of pores and fine lines while creating a natural matte finish for the face
- You can customize the look you desire with just a swipe of your brush

BENEFITS:

The unique formulation includes finely milled talc and corn starch, for superb shine reduction, and for excellent adherence and long wear.

HOW TO USE:

Apply the powder on its own for a very natural look or over foundation for a more sophisticated result.

CUSTOMERS SHOULD KNOW:

Smooth and feather light, this pressed powder glides easily over bare skin or foundation, leaving a natural yet flawless appearance.

PRODUCT GROUP NUMBER: 8100

INGREDIENTS:

TALC, ALUMINUM STARCH OCTENYLSUCCINATE, ISOSTEARYL NEOPENTANOATE, MICA, DIMETHICONE, ISOPROPYL ISOSTEARATE, ZINC STEARATE, BHA, DEHYDROACETIC ACID, PARFUM (FRAGRANCE), BUTYLPARABEN. [+/- MAY CONTAIN : IRON OXIDE (CI 77491), IRON OXIDE (CI 77492), IRON OXIDE (CI 77499), RED 7 (CI 15850), MANGANESE VIOLET (CI 77742), TITANIUM DIOXIDE (CI 77891), BLUE 1 (CI 42090:2), YELLOW 5 (CI 19140), YELLOW 6 (CI 15985:1)].

LORD & BERRY

BLUSH
POWDER BLUSHER

CHARACTERISTICS:

A pressed powder BLUSH for a sheer make up. Powder BLUSH provides a healthy glow to flatter any skin tone. A silky-sheer powder blush that instantly gives cheeks a fresh, natural-looking pop of color.



UNIQUE QUALITIES:

- Brilliant touch of color
- Simply radiant looking results
- Fresh natural look

BENEFITS:

- Silky texture
- Glides on smoothly
- Matte and shimmer finish

HOW TO USE:

Apply on cheeks using the #836 Brush, blend it up into the hairline, then downwards to soften.

CUSTOMERS SHOULD KNOW:

BLUSH adds warmth and color to the face.

Best colors for blush are the one that are close to skin tone.

PRODUCT GROUP NUMBER: 8200

INGREDIENTS:

SHADES 8205-8208, 8215-8216: TALC, ALUMINUM STARCH OCTENYLSUCCINATE, ISOSTEARYL NEOPENTANOATE, DIMETHICONE, ISOPROPYL ISOSTEARATE, ZINC STEARATE, BHA, DEHYDROACETIC ACID, BUTYLPARABEN. [+/- MAY CONTAIN: TITANIUM DIOXIDE (CI 77891), IRON OXIDES (CI 77491), IRON OXIDES (CI 77499), IRON OXIDES (CI 77492), RED 22 (CI 45410), RED 6 (CI 15850), ULTRAMARINES (CI 77007), YELLOW 6 (CI 15985)].

SHADES 8209-8214: TALC, MICA, ALUMINUM STARCH OCTENYLSUCCINATE, OCTYLDODECYL STEAROYL STEARATE, DIMETHICONE, ZINC STEARATE, CYCLOMETICONE, DEHYDROACETIC ACID, BHT, BUTYLPARABEN, ETHYLPARABEN, METHYLPARABEN, PROPYLPARABEN. [+/- MAY CONTAIN: IRON OXIDES (CI 77491), IRON OXIDES (CI 77499), RED 6 (CI 15850), TITANIUM DIOXIDE (CI 77891), IRON OXIDES (CI 77492), ULTRAMARINES (CI 77007), YELLOW 6 (CI 15985)].

CHARACTERISTICS:

Blusher is a cream blush that sculpts and emphasizes cheekbones. It gives a lightweight creamy flush of color for a soft natural finish. It's easy to blend and the pigmented colors are buildable for an instant healthy glow effect. No greasy.



UNIQUE QUALITIES:

- Emollient effect
- No greasy
- Easy to blend
- Lightweight creamy texture
- Soft natural finish
- Instant healthy glow effect

BENEFITS:

- Colors' brightness
- High pigmented texture
- Skin don't feel caked
- Colors don't crack or move

HOW TO USE:

Apply with fingertips or use Lord&Berry Stippling Brush #837 and build the color to your desired intensity.

CUSTOMERS SHOULD KNOW:

Not tested on animals

PRODUCT GROUP NUMBER: 8230

INGREDIENTS:

ISOPROPYL MYRISTATE, ALUMINUM STARCH OCTENYLSUCCINATE, HYDROGENATED CASTOR OIL DIMER DILINOLEATE, EUPHORBIA CERIFERA (CANDELILLA) WAX, CERA ALBA (BEESWAX), DIMETHICONE (and) DIMETHICONE CROSSPOLYMER, TALC, MICA, METHYLPARABEN/ETHYLPARABEN/PROPYLPARABEN/BUTYLPARABEN, PARFUM, BHA, BHT. [+/- MAY CONTAIN: TITANIUM DIOXIDE (CI 77891), YELLOW 6 (CI 15985), RED 6 (CI 15850), IRON OXIDES (CI 77492), IRON OXIDES (CI 77499), IRON OXIDES (CI 77491)].

LORD & BERRY

SCULPT & CONTOUR

CREAM BRONZER

CHARACTERISTICS:

The innovative Sculpt & Contour Cream Bronzer melts into skin and delivers a natural translucent color, while minimizing imperfections using soft focus technology. The weightless texture glides easily over the skin and delivers a thin film with velvety finish. The color release creates subtle definition enhancing the natural contours of the face.



UNIQUE QUALITIES:

- High tech texture
- Ultra thin film
- Silky effect finish
- Perfect color release thanks to the coated high tech pigments
- Natural effect
- Easy to blend

BENEFITS:

- Sunflower seed and carnauba wax deliver emollients properties
- Antioxidant properties
- Soft focus effect
- Natural wax

HOW TO USE:

Apply Sculpt & Contour to create a customized color using Lord & Berry Stippling Brush (# 837). For a deep bronzed glow, apply to the areas that sun would naturally hit and blend well.

Playing with light and shadow can really reshape, resize, enhance and define your facial framework.

GOES WELL WITH:

Cream Foundation, Cream to Powder, Flawless, Blusher, Luminizer.

CUSTOMERS SHOULD KNOW:

Easy to blend with fingers or a blending brush, like Brush#837

Not tested on animals

Paraben free

Allergen free

PRODUCT GROUP NUMBER: 8930

INGREDIENTS:

OCTYLDODECANOL, ETHYLHEXYL PALMITATE, TALC, POLYMETHYL METHACRYLATE, ALUMINUM STARCH OCTENYLSUCCINATE, BIS-DIGLYCERYL POLYACYLADIPATE-2, STEARYL BEESWAX, POLYETHYLENE, BEHENYL BEESWAX, COPERNICIA CERIFERA (CARNAUBA) WAX, OZOKERITE, HELIANTHUS ANNUUS (SUNFLOWER) SEED WAX, TOCOPHERYL ACETATE, ASCORBYL PALMITATE, TOCOPHEROL, HYDROGEN DIMETHICONE, ALUMINUM HYDROXIDE, PHENOXYETHANOL, TROPOLONE, PARFUM (FRAGRANCE). [+/- MAY CONTAIN: TITANIUM DIOXIDE (CI 77891), IRON OXIDES (CI 77491), IRON OXIDES (CI 77492), IRON OXIDES (CI 77499), MANGANESE VIOLET (CI 77742), ULTRAMARINES (CI 77007), FERRIC AMMONIUM FERROCYANIDE (CI 77510), BLUE 1 (CI 42090)].

LORD & BERRY

BRONZER
POWDER BRONZER

CHARACTERISTICS:

Silky formula glides on smoothly and offers a matte finish with long-lasting wear. Also available in frosted shade.



UNIQUE QUALITIES:

- High pigmented texture
- Silky matte finish

BENEFITS:

- Natural sun tanned look
- Glides on smoothly

HOW TO USE:

First create an even base with foundation and concealer. Then apply, blend and set the bronzer to make your face glow with a warm radiance.

CUSTOMERS SHOULD KNOW:

Designed for a natural-looking glow or for a sun kissed tan effect.

PRODUCT GROUP NUMBER: 8900

INGREDIENTS:

TALC, MICA, ALUMINUM STARCH OCTENYLSUCCINATE, OCTYL DODECYL STEAROYL STEARATE, DIMETHICONE, NYLON-12, ISOPROPYL MYRISTATE, METHYLPARABEN, ETHYLPARABEN, PROPYLPARABEN, DEHYDROACETIC ACID, BUTYLPARBEN, BHA. [+/- MAY CONTAIN: IRON OXIDES (CI 77491), IRON OXIDES (CI 77492), IRON OXIDES (CI 77499)].

LORD & BERRY

ON STAGE
FLUID FOUNDATION

CHARACTERISTICS:

On Stage is a silky touch foundation with high blendability for a comfortable and uniform film on the skin. As a daily liquid foundation, it provides protection to the skin from the everyday stress agents thanks to its antioxidant active ingredients and plant origin oils. Ideal for all skin types, it grants a healthy glow.



QUALITIES & BENEFITS:

- Squalane restores the lipid structure of the skin by hydrating it at the same time.
- Vitamin E thanks to its antioxidant properties supports the natural process of cell renewal.
- Argan Oil softens and strengthens the skin. It is enriched with Vitamin E, linoleic acid and natural tocopherols with provide anti-aging properties.
- Alaria Esculenta Extract is a powerful antioxidant that also plays an important role in collagen synthesis. It enhances the synthesis of hyaluronic acid too and it has a revitalizing, firming, filler and replumping effect.
- Punica Granatum Fruit Extract has an astringent and toning effect. It fights free radicals responsible for skin aging.

HOW TO USE:

- Light coverage: Use your fingers to gently apply one layer of foundation and massage onto face.
- Medium coverage: Use the Foundation Brush #838 (sold separately) to elevate coverage and ensure an evenly-blended effect. Seamlessly diffuse the foundation by using sweeping motions as you blend outwards.

GOES WELL WITH:

All Lord & Berry face products

CUSTOMERS SHOULD KNOW:

Paraben Free
Not tested on animals
Allergen free

PRODUCT GROUP NUMBER: 8640

INGREDIENTS:

AQUA (WATER), CYCLOPENTASILOXANE, TALC, SQUALANE, CETYL PEG/PPG-10/1 DIMETHICONE, POLYGLYCERYL-4 ISOSTEARATE, PARAFFINUM LIQUIDUM (MINERAL OIL), ETHYLHEXYL METHOXYCINNAMATE, GLYCERIN, DISTEARDIMONIUM HECTORITE, SODIUM HYALURONATE, TOCOPHERYL ACETATE, ARGANIA SPINOSA KERNEL OIL, ALARIA ESCULENTA EXTRACT, PUNICA GRANATUM FRUIT EXTRACT, CAPRYLIC/CAPRIC TRIGLYCERIDE, ACRYLATES COPOLYMER, HYDROGEN DIMETHICONE, ALUMINUM HYDROXIDE, DISODIUM EDTA, SODIUM DEHYDROACETATE, PHENOXYETHANOL, TROPOLONE, PARFUM (FRAGRANCE). [+/- MAY CONTAIN: CI 77891 (TITANIUM DIOXIDE), CI 77491 (IRON OXIDES), CI 77492 (IRON OXIDES), CI 77499 (IRON OXIDES), CI 77742 (MANGANESE VIOLET), CI 77007 (ULTRAMARINES), CI 77510 (FERRIC AMMONIUM FERROCYANIDE), CI 42090 (BLUE1), CI19140 (YELLOW 5), CI15850 (RED 7), CI15850 (RED 6)].

Previously a trend worn only by the a-list elite, and fashion models on runways and photoshoots, the contouring technique has exploded into popular culture and is now a significant step in the make up routine of millions of women across the globe. Contouring is the art of shading and highlighting to enhance or disguise facial features. Contouring provides subtle definition to the face and should create a discreet sense of illusion.



CONTOUR PALETTE KIT INCLUDES:

- BRIGHTENER - Highlighter Powder

Brightener silky low-glow powders cast a gentle highlight wherever you sweep them on, playing up your favorite features and giving your whole face a radiant look.

This smooth, silky powder contains a sophisticated and ultra-fine luminescent pearls that give skin a luminous look. It also provides the color payoff of a loose powder, with the convenience of a pressed powder.

- BRONZING - Bronzer Pressed Powder

Bronzing sheer powder gives your skin a bronzed radiance whether you're in the sunlight or moonlight. It's easy to wear, easy to blend, and is versatile enough to wear as an all-over complexion enhancer or blush. It also provides the color payoff of a loose powder, with the convenience of a pressed powder.

- CONCEALER - Cream Concealer

A moisture-rich concealer designed for under and around the eye area. This cream to powder formula conceals discolorations and dark circles without settling into fine lines and wrinkles.

• **BRIGHTENER** - INGREDIENTS: TALC, MICA, ALUMINUM STARCH OCTENYLSUCCINATE, OCTYL DODECYL STEAROYL STEARATE, DIMETHICONE, ISOPROPYL MYRISTATE, ZINC STEARATE, BHA, DEHYDROACETIC ACID, PARFUM, BUTYLPARBEN. [+/- MAY CONTAIN: TITANIUM DIOXIDE (CI 77891), IRON OXIDES (CI 77492), IRON OXIDES (CI 77491), IRON OXIDES (CI 77499)]

• **BRONZING** - INGREDIENTS: TALC, MICA, ALUMINUM STARCH OCTENYLSUCCINATE, OCTYL DODECYL STEAROYL STEARATE, DIMETHICONE, ISOPROPYL MYRISTATE, ZINC STEARATE, BHA, DEHYDROACETIC ACID, PARFUM (FRAGRANCE), BUTYLPARBEN. [+/- MAY CONTAIN: IRON OXIDES (CI 77492), IRON OXIDES (CI 77499), IRON OXIDES (CI 77491)]

• **CONCEALER** - INGREDIENTS: ISOPROPYL MYRISTATE, ALUMINUM STARCH OCTENYLSUCCINATE, HYDROGENATED CASTOR OIL DIMER DILINOLEATE, EUPHORBIA CERIFERA (CANDELLILLA) WAX, CERA ALBA (BEESWAX), DIMETHICONE(AND)DIMETHICONE COPOLYMER, TALC, MICA, METHYLPARABEN/ETHYLPARABEN/PROPYLPARABEN/BUTYLPARABEN, PARFUM (FRAGRANCE), BHA, BHT. [+/- MAY CONTAIN: IRON OXIDES (CI 77491), TITANIUM DIOXIDE (CI 77891),

CONTOUR PALETTE



- LIGHT CONTOUR - Sculpt Cream to Powder Foundation

Cream to Powder Light Contour is a compact and long lasting foundation with medium to high coverage. It has a silky finish with excellent blendability, is easy to apply and comfortable to wear. It is suitable for all skin types, especially for people with oily skin or areas where humidity is quite high. It contains natural minerals, oils and nutritional agents. This luxurious cream formula allows for customizable and effortless application while creating a natural looking contour.

- DEEP CONTOUR - Sculpt Cream to Powder Foundation

Cream to Powder Deep Contour is a compact and long lasting foundation with medium to high coverage. It has a silky finish, it is easy to apply and comfortable to wear. Deep Contour is the perfect cream contouring shade - adding depth and dimension with a natural shadow effect and its buildable, blendable formula.

- BLUSHER - Cream Blush

Blusher gives you a lightweight creamy flush of color with a soft natural finish. A cream blush that sculpts and emphasises cheekbones. Its easy to blend and the result is an instant healthy glow effect. Non greasy.

PRODUCT GROUP NUMBER: 9926

IRON OXIDES (CI 77492), IRON OXIDES (CI 77499)]

• **LIGHT CONTOUR** - INGREDIENTS: ISOPROPYL MIRYSTATE, ALUMINUM STARCH OCTENYLSUCCINATE, HYDROGENATED CASTOR OIL DIMER DILINOLEATE, EUPHORBIA CERIFERA (CANDELILLA) WAX, CERA ALBA (BEESWAX), DIMETHICONE(AND)DIMETHICONE CROSSPOLYMER, TALC, MICA, METHYLPARABEN/ETHYLPARABEN/PROPYLPARABEN/BUTYLPARABEN, PARFUM (FRAGRANCE), BHA, BHT. [+/- MAY CONTAIN: TITANIUM DIOXIDE (CI 77891), IRON OXIDES (CI 77491), IRON OXIDES (CI 77492), IRON OXIDES (CI 77499)]

• **DEEP CONTOUR** - INGREDIENTS: ISOPROPYL MIRYSTATE, ALUMINUM STARCH OCTENYLSUCCINATE, HYDROGENATED CASTOR OIL DIMER DILINOLEATE, EUPHORBIA CERIFERA (CANDELILLA) WAX, CERA ALBA (BEESWAX), DIMETHICONE(AND)DIMETHICONE CROSSPOLYMER, TALC, MICA, METHYLPARABEN/ETHYLPARABEN/PROPYLPARABEN/BUTYLPARABEN, PARFUM (FRAGRANCE), BHA, BHT. [+/- MAY CONTAIN: TITANIUM DIOXIDE (CI 77891), IRON OXIDES (CI 77491), IRON OXIDES (CI 77492), IRON OXIDES (CI 77499)]

• **BLUSHER** - INGREDIENTS: ISOPROPYL MIRYSTATE, ALUMINUM STARCH OCTENYLSUCCINATE, HYDROGENATED CASTOR OIL DIMER DILINOLEATE, EUPHORBIA CERIFERA (CANDELILLA) WAX, CERA ALBA (BEESWAX), DIMETHICONE(AND)DIMETHICONE CROSSPOLYMER, TALC, MICA, METHYLPARABEN/ETHYLPARABEN/PROPYLPARABEN/BUTYLPARABEN, PARFUM (FRAGRANCE), BHA, BHT. [+/- MAY CONTAIN: TITANIUM DIOXIDE (CI 77891), IRON OXIDES (CI 77491), IRON OXIDES (CI 77492), RED 27 (CI 45410), YELLOW 6 (CI 15985), IRON OXIDES (CI 77499)]

FACE SHAPE GUIDE FOR CONTOURING

For highlighting and contouring, should always consider your face shape. Every face is different! Shading and highlighting is an ideal way to sculpt, and enhance features and face shape. Follow our step-by-step guide by identifying your face shape.



OVAL

Oval-shaped faces are generally balanced: the length is greater than the width.



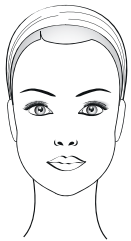
SQUARE

Square-shaped faces have a strong jawline that's wide at the chin, and cheeks appear flatter.



ROUND

Round faces are as wide as they are long, but with soft, rounded edges.



HEART

Heart-shaped faces have the most width at the cheek, eye, and forehead areas, with a narrow to pointy chin. Sometimes they will also have a higher forehead.

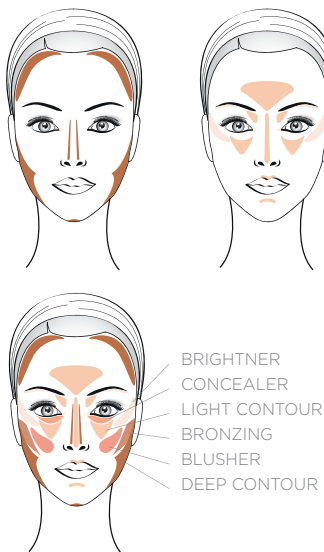


OBLONG

Oblong faces are as long as they are wide. Straight sides, a high forehead, and larger than average distance between the bottom of the lip and the tip of the chin are common attributes of the oblong face.

OVAL FACE SHAPE

If you have an oval face you don't really need to "correct" anything. But you can enhance your cheekbones, and give the appearance of slimmer features (e.g the nose).



Step 1: First apply CREAM FOUNDATION to uniform your skin colour, then use Deep contour #5 from the hollows of the cheeks to the jawlines, down the sides of your nose and along the hairline and temples. When shading outwards, do not go further than the outer edge of your brow.

Step 2: Apply LIGHT CONTOUR to the following areas: the centre of the forehead, the inner corner of the eyes under the brows, the centre of your chin and under your eyes to create an inverted triangle of light. Then apply CONCEALER to hide any dark circles.

Step 3: Apply BRIGHTENER from the browbones to the cheekbones in a C-shape, in the inner corner of the eyes and in your cupid's bow.

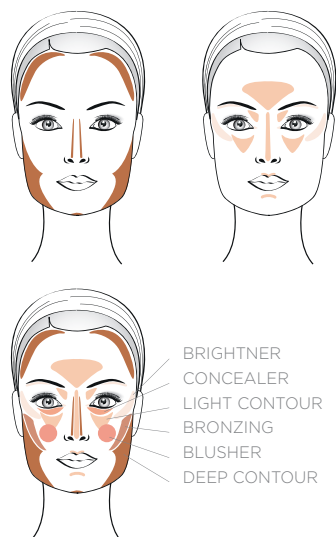
Step 4: Apply BRONZING under the cheekbones

Step 5: Apply Blusher #6 to the apples of your cheeks for a healthy, flushed look.

Step 6: Finish by blending all the stripes of highlighter and contouring product so there are no telltale lines.

SQUARE FACE SHAPE

When contouring on a square face shape, focus on softening and rounding the jawline. It helps to contour the forehead to give it more of an oval shape.



Step 1: After applying Cream foundation to uniform your skin colour, use DEEP CONTOUR to these areas: under your cheekbones and around your jawline (but skip shading your chin), the sides of your nose and the tip of your nose and the temples.

Step 2: Apply LIGHT CONTOUR to these areas: the bridge of your nose, just above your cheekbones, the center of the chin and forehead.

Step 3: CONCEALER to hide dark circles and around the eye area.

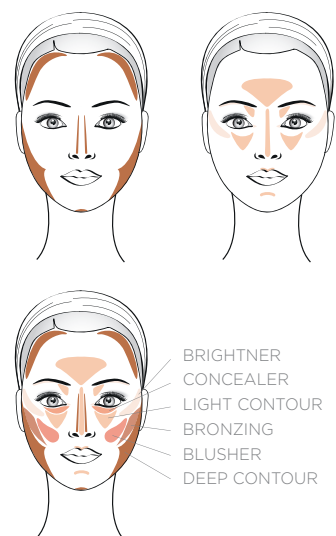
Step 4: Highlight above and below outer edge of the brows using BRIGHTENER.

Step 5: Then apply BRONZING from the hollows of the cheeks to the jawline.

Step 6: Apply BLUSHER on the apples, but only a light application. Too much will accentuate your jawline and the angles of your face.

ROUND FACE SHAPE

When contouring a round face, shade around the edges of the face to minimize the fullness, then highlight the centre to create balance.



Step 1: First apply CREAM FOUNDATION to uniform your skin colour, then apply DEEP CONTOUR to the following areas: draw a curved line from the centre of your ear to your jawline, on your temples, along the sides and tip of your nose.

Step 2: Apply LIGHT CONTOUR to these areas: the centre of your hairline to the centre of the forehead, the bridge of your nose, your cheekbones under the outer corner of the eyes, and the centre of your chin.

Step 3: Then use CONCEALER to hide dark circle and around the eye area.

Step 4: Blend all contouring and highlighting with a brush. When blending your cheekbones, blend both upwards and downwards for an even finish.

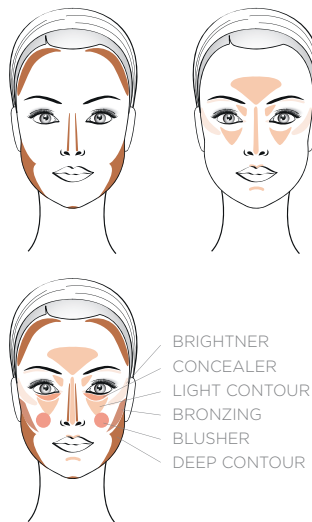
Step 5: Apply BRIGHTENER underneath your brow bone, on the bridge of your nose, in the inner corner of your eyes and your cupid's bow.

Step 6: Then apply BRONZING above your cheekbones.

Step 7: Finish with a touch of BLUSHER on the apples, but don't apply too close to the nose area.

HEART FACE SHAPE

Heart-shaped faces usually have prominent cheekbones and chins, so it's important not to over-contour, which will make your face look pointier.



Step 1: Start by using the CREAM FOUNDATION to uniform skin, then use DEEP CONTOUR under your cheekbones and on your temples. In order to decide where you need to contour beneath your cheekbones, just find the central part of your ear and blend downwards from that point, at an angle.

Step 2: Apply the DEEP CONTOUR shade along the sides of your nose, under the tip of your nose, in the crease of your eyelid and on the chin. Blend the darkest parts of your face first. Blend downwards from your ear towards your jawline, then blend downwards on your nose and temples.

Step 3: Apply LIGHT CONTOUR down the bridge of your nose, just above your cheekbones, your chin just below the lower lip and along your jawline.

Step 4: Then apply the CONCEALER under the eyes and on the top of the cheeks.

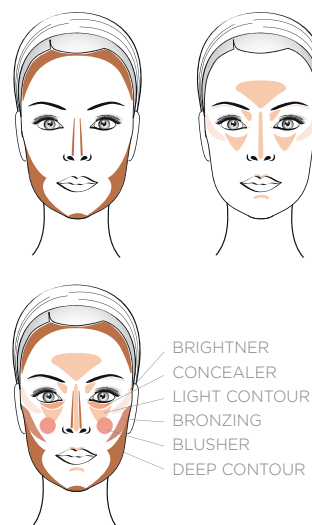
Step 5: Apply BRIGHTENER on your lids to lift your eyes and brows, and down the bridge of the nose.

Step 6: Apply BRONZING on the side of the cheeks.

Step 7: To finish, apply BLUSHER to the lower part of the apples.

OBLONG FACE SHAPE

The main thing to keep in mind with an oblong face is to shorten the length of the face by minimizing the chin and emphasizing the cheekbones.



Step 1: First apply CREAM FOUNDATION to uniform your skin colour, then apply DEEP CONTOUR to these areas: the bottom of the chin, around the edge of your entire face and along the hairline at the top of the forehead, blending it downward.

Step 2: Apply LIGHT CONTOUR to these areas: the eyelids, halfway down the bridge of your nose, the cheekbones, the centre of your forehead and brow bone. Blend all contouring and highlighting with a brush.

Step 3: Then use CONCEALER to hide dark circles.

Step 4: Apply BRIGHTENER to your eyelids and the bridge of your nose, but avoid your chin, since that will make your face look longer.

Step 5: Apply BRONZING just under the cheekbones in the hollow and blend up and out towards the hairline.

Step 6: Finish your look by applying BLUSHER to the apples to put the focus on your cheeks.

CHARACTERISTICS:

An invisible wonderful veil on your skin. GRAN FINALE is a translucent, lightweight, easy-to-apply, new multi action loose powder. It blends effortlessly to set makeup, it creates a soft-focus effect to subtly blur fine lines and reduces the look of pores. GRAN FINALE emphasizes the features of the face while unfirming the complexion with a matte and luminous finish for an all-day flawless skin. The truly-translucent shades work on all skin tones.



QUALITIES & BENEFITS:

- Silky and lightness feeling on the skin
- Perfect adhesion with blurring effect
- Oil absorbing properties
- Soft focus effect
- Reduce the look of pores

HOW TO USE:

- Using the Tapered Powder Brush #835 (sold separately), pick up a small amount of powder and tap off the excess.
- Apply powder all over or on desired areas of the face to set makeup.
- If using a puff, dip it into the powder then tap off the excess powder.

GOES WELL WITH:

All Lord & Berry products

CUSTOMERS SHOULD KNOW:

Paraben free
Mineral oil free
Fragrances free
Vegan
Cruelty Free

3 SHADES:

- **TRANSLUCENT:** it is a white-toned powder meant for just about every skin tone because it turns invisible when applied to the skin.
- **BANANA:** it is a yellow-toned powder which works its magic to offset any redness, illuminate the skin, neutralizes dark under eye circles and set make up – and the best part is that it works on any skin tone
- **JUST PEACH:** it is a peach-toned powder designed to give brightness to a dull complexion, to neutralise blue tones and set make up. It works on any skin tone.

PRODUCT GROUP NUMBER: 8300

INGREDIENTS:

ALUMINUM STARCH OCTENYLSUCCINATE, TALC, MAGNESIUM CARBONATE, LAUROYL LYSINE, OCTYLDODECYL STEAROYL STEARATE, SORBIC ACID, MICA, DIETHYLHEXYL SYRINGYLIDENEMALONATE, CAPRYLIC/CAPRIC TRIGLYCERIDE. [+/- MAY CONTAIN: ULTRAMARINES (CI 77007), TITANIUM DIOXIDE (CI 77891), IRON OXIDES (CI 77492), IRON OXIDES (CI 77491)].

CHARACTERISTICS:

An ultra-fine setting powder with bright-reflecting ingredients to diffuse light while reducing shine. The smooth, silky, velvety texture helps setting the make up, gives balance to the skin tone minimizing redness and other imperfections while providing an anti-age action.

This glowing powder has smoothing and soft-focus properties with spherical shape that allows for seamless correction, luminous complexion and customizable application. Touch Up is perfect for oily T-zone, complexion and a flawless retouch to your make up. It can be worn alone or over foundation.



QUALITIES & BENEFITS:

- Silky skin
- Velvety touch
- Invisible powder
- Oil absorbing properties
- Impeccable and Flawless Finish
- Wrinkle correction properties
- Excellent water-repellency and resistance properties
- Vitamin A + E complex with antioxidant action that helps to protect skin against the effects of free radicals
- Spherical powders allow comfort and blendability
- Suitable for all skin types, even sensitive ones

HOW TO USE:

- Using the Tapered Powder Brush #835 (sold separately), apply Touch Up around the nose, T-zone, and any other oily areas that need to be mattified.
- It can be used on its own, or on top of foundation and concealer to set them in place.
- For oily skin types looking for a truly flawless finish, apply Touch Up all over the face for more coverage, starting from the T-zone and working outwards and upwards.

GOES WELL WITH:

All Lord & Berry Foundations and Concealers

CUSTOMER SHOULD KNOW:

Talc free
Paraben Free
Fragrance Free
D3-D5 Free

PRODUCT GROUP NUMBER: 8120

INGREDIENTS:

MICA, ALUMINUM STARCH OCTENYLSUCCINATE, KAOLIN, MAGNESIUM MYRISTATE, OCTYLDODECYL STEAROYL STEARATE, ISOSTEARYL NEOPENTANOATE, SODIUM POTASSIUM ALUMINUM SILICATE, DIMETHICONE, 1,2-HEXANEDIOL, CAPRYLYL GLYCOL, ETHYL VANILLIN, SILICA, DIMETHICONOL, TRIETHOXYCAPRYLYLSILANE, TOCOPHERYL ACETATE, RETINYL PALMITATE, CAPRYLIC/CAPRIC TRIGLYCERIDE, RUBUS IDAEUS SEED OIL, TROPOLONE. [+/- MAY CONTAIN: TITANIUM DIOXIDE (CI 77891), IRON OXIDES (CI 77492), IRON OXIDES (CI 77491), IRON OXIDES (CI 77499)].

How to find foundation for your skin tone

WARM UNDERTONES

PEOPLE WHO FALL IN THIS CATEGORY ARE DOMINANTLY YELLOW, GOLDEN OR PEACH SKIN TONE.

COOL UNDERTONES

PEOPLE WHO FALL IN THIS CATEGORY HAS A PINK, RED OR BLUE SKIN TONE.

NEUTRAL UNDERTONES

PEOPLE WHO FALL IN THIS CATEGORY HAS A COMBINATION OF WARM AND COOL SKIN TONE (ANY DISTINGUISHABLE PINK OR YELLOW UNDERTONES).

LORD & BERRY

CREAM FOUNDATION FLUID FOUNDATION



#8617
FAIR IVORY

> For very light warm skin with yellow undertones



#8618
BEIGE NUDE

> For light neutral skin



#8619
ALMOND

> For light warm skin with yellow undertones



#8620
IVOR

> For light cool skin with pink undertones



#8621
HONEY

> For medium warm skin with yellow undertones



#8622
ESPRESSO

> For medium neutral skin



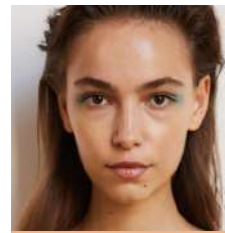
#8623
MACCHIATO

> For medium warm skin with dark yellow undertones



#8624
SAND

> For medium cool skin with pink undertones



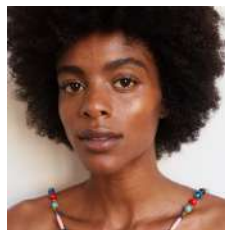
#8625
WARM SAND

> For light/medium warm skin with yellow undertones



#8629
GINGER

> For dark skin with yellow undertones



#8630
CARAMEL

> For dark skin with pink undertones



#8631
COCOA

> For dark skin with neutral undertones

LORD & BERRY

PERFECT SKIN FOUNDATION STICK



#8720
NATURAL IVORY

> For light warm skin with yellow undertones



#8721
NATURAL BEIGE

> For light neutral skin



#8722
NATURAL ROSE

> For light cool skin with pink undertones



#8723
HONEY

> For light/medium cool skin with pink undertones



#8724
GOLDEN

> For light/medium warm skin with yellow undertones



#8725
WARM CAPPUCCINO

> For medium neutral skin

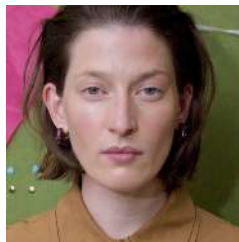
LORD & BERRY

ON STAGE FLUID FOUNDATION



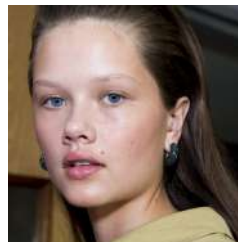
#8640
FAIR IVORY

> For very light warm skin with yellow undertones



#8641
IVORY

> For light cool skin with pink undertones



#8642
BEIGE NUDE

> For light neutral skin



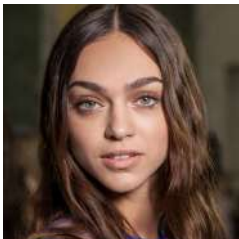
#8643
ALMOND

> For light warm skin with yellow undertones



#8644
WARM SAND

> For light/medium warm skin with yellow undertones



#8646
HONEY

> For medium warm skin with yellow undertones



Accessories

LORD & BERRY

GLAMOUR LASH COLLECTION

FALSE EYE LASHES

CHARACTERISTICS:

Our eye lash collection delivers extra flair and volume with a unique range of double-layered, cross-hair designs and a thin, dark band to intensify your look. Made from advanced silk fibres, each lash can be worn up to ten times. No Mascara necessary!



APPLICATION:

1. Check fit: align band with natural lash line to check fit. Trim excess if necessary.
2. Apply adhesive: apply a thin line of adhesive along band. Wait 30 seconds to set.
3. Apply lashes: secure lash band by pressing onto lash line.
4. Removal: gently peel off lash starting at outer corner. Remove used adhesive from band and place lashes back on tray for reuse.

CUSTOMERS SHOULD KNOW:

Caution: use only as directed. Keep out of reach of children, for external use only.

PRODUCT GROUP REFERENCE: EL



EL2



EL10



EL11



EL17



EL21

LORD & BERRY

LASH WARDROBE COLLECTION

FALSE EYE LASHES

CHARACTERISTICS:

Our eye lash collection delivers extra flair and volume with a unique range of double-layered, cross-hair designs and a thin, dark band to intensify your look. Made from 100% treated human hair, each lash can be worn up to ten times. No Mascara necessary!



APPLICATION:

1. Check fit: align band with natural lash line to check fit. Trim excess if necessary.
2. Apply adhesive: apply a thin line of adhesive along band. Wait 30 seconds to set.
3. Apply lashes: secure lash band by pressing onto lash line.
4. Removal: gently peel off lash starting at outer corner. Remove used adhesive from band and place lashes back on tray for reuse.

CUSTOMERS SHOULD KNOW:

Caution: use only as directed. Keep out of reach of children, for external use only.

PRODUCT GROUP REFERENCE: EL



EL1



EL13



EL15



EL20



EL22



EL24



EL27



- #835 TAPERED POWDER BRUSH - Powder brush, round pointed end, black goat hair
- #836 BLUSH & CONTOUR BRUSH - Blush brush, flat with domed end, black goat hair
- #837 STIPPLING BRUSH - Duo Fibers, round square edged, black goat hair and white synthetic fibers
- #838 FOUNDATION BRUSH - Grey with white tip polyester fiber brush, flat with domed end
- #839 FLAT CONCEALER BRUSH - Grey with white tip polyester fiber brush, flat with domed end
- #840 SPOOLY BRUSH - Eye brow brush, synthetic fiber
- #841 ANGLED BROW/LINER BRUSH - Eye brow and eye liner brush, flat slanted, pure Kolinsky sable hair
- #842 BLENDING SHADOW BRUSH - Blending brush, round pointed end, black goat hair
- #843 ROUND SHADOW BRUSH - Blue squirrel hair brush, round with domed end
- #844 CREASE BRUSH - Crease brush, round with short domed end, pure Kolinsky sable hair
- #845 EYE SHADER BRUSH - Shadow blending brush, short flat with domed end, white goat hair
- #846 PRECISION EYESHADOW BRUSH - Pencil and shadow brush, round with short domed end, white goat hair
- #847 POINTED EYELINER BRUSH - Eye liner brush, short round pointed end, pure Kolinsky sable hair
- #848 PERFECT LIP BRUSH - Lip brush, flat filbert shaped, synthetic fibers

LORD & BERRY

SHARPENERS & SPONGES



#6011

JUMBO SHARPENER
Sharpens all jumbo pencils



#6010

MONO SHARPENER
Sharpens all small pencils



#9107

LUXURY BELL SPONGE

Color Chart

2019

SILK KAJAL

KOHL EYE LINER



#1001
BLACK



#1002
NUDO



#1003
WHITE

COUTURE KOHL KAJAL

EYE PENCIL



#101
DEEP BLACK

LUXURY LINER

EYE LINER



#901
BLACK

POLISH

EYE PENCIL



#5071
MIRROR BLACK

PAILLETTES

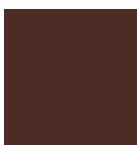
EYE PENCIL



#5072
SPARKLE BLACK
(WITH GLITTERS)

LINE/SHADE

EYE PENCIL



#219
COFFEE



#220
SOFT BLACK



#221
DARK BLACK



#223
MIDNIGHT



#224
WILD SAGE



#225
BRONZE



#226
SMOKE



#227
FLASH PURPLE

LINE/SHADE GLAM

EYE PENCIL



#230
DORE'



#231
ANTIQUÉ BRONZE



#232
ARGENTO

SMUDGEPROOF

WATERPROOF EYE PENCIL



#701
BLACK



#703
BLACK/BROWN

VELLUTO

EYE PENCIL AND SHADOW



#1801
VERO BLACK



#1808
SUPREME GREEN



#1809
SUPREME BLUE



#1810
SUPREME PURPLE

INKGLAM

EYE LINER



#1121
BLACK

SHODŌ

STYLOGRAPHIC EYE LINER



#1112
INTENSE BLACK

PERFECTO

GRAPHIC LINER



#1101
BLACK

MAGNIFICO

CREAM POT LINER



#1102
BLACK EBONY

KAJAL STICK

INTENSE BLACK KAJAL



#1151
ORIENTAL BLACK

LE PETIT LINER

MICRO PRECISION EYE LINER



#401
NOIR

MASCARE

TREATMENT & VOLUME MASCARA



#1351
BLACK

BACK IN BLACK

DEEP BLACK MASCARA



#1352
DEEP BLACK

PRODIGIOUS

FALSE LASH & SUPER VOLUME EFFECT



#1353
BLACK

BOOST

TREATMENT MasCare



#1355
BLACK

ALCHIMIA

HIGH DEFINITION MASCARA



#1370
BLACK

PERFECT BROW

PENCIL DEFINER



#1705
BLONDIE



#1706
BRUNETTE

DIVA

EYE BROW WET & DRY POWDER



#1750
GRACE



#1751
MARILYN



#1752
RITA



#1753
SOPHIA



#1754
JAQUELINE



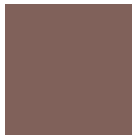
#1755
LIZ

MUST HAVE

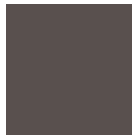
TINTED BROW MASCARA



#1711
BLONDE



#1712
TAUPE



#1713
MAROON

STRIP KIT

EYE BROW STYLING SET



#1756
MEDIUM BLONDE



#1757
MEDIUM BRUNETTE

GLACÉE

EYE BROW GEL FIXER



#1630
NATURAL

MUST HAVE

BROW FIXER GEL



#1710
CLEAR

STARDUST

EYE SHADOW LOOSE POWDER



4 7 1
DARK BLACK
MATTE



4 7 2
DARK VIOLET



4 7 3
GOLD



4 7 4
SILVER



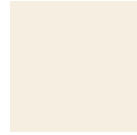
4 7 5
AQUA



4 7 6
LIGHT BRONZE



4 7 7
DARK BRONZE



4 7 8
WHITE MOON



4 7 9
GOLD GREEN



4 8 0
GOLD BLACK



4 8 1
GREY GREEN

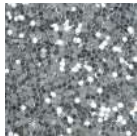


4 8 2
ROSE

GLITTER



5 0 1
HOLO SILVER



5 0 2
SILVER



5 0 3
BRIGHT PINK



5 0 4
BRIGHT COFFEE

#REGLAM

CRAYON EYE SHADOW



4 2 6 0
#BACKSTAGE



4 2 6 1
#MADFORIT



4 2 6 2
#INCOGNITO



4 2 6 3
#FLASHBACK



4 2 6 4
#EXCLUSIVE



4 2 6 5
#STUNNING



4 2 6 6
#GORGEOUS

SETA

EYE SHADOW PRESSED POWDER

BASIC LINE UP GENERAL TESTER DISPLAY



ULTIMATE

LIP LINER
PRO



3 0 3 3
PLUM

3 0 3 5
NUDE

3 0 3 6
ROSSO

3 0 3 7
TANNED NUDE

3 0 3 8
MANDARIN

3 0 3 9
TOASTY

3 0 4 1
VINTAGE ROSE

3 0 4 3
BARK



3 0 4 4
BARE

3 0 4 5
NATURAL

ULTIMATE

LIP LINER



3 0 3 4
BLUSH

3 0 4 0
ROMANTIC ROSE

3 0 4 2
RUSTY

3 0 4 6
WHISPER PINK

3 0 4 7
RASPBERRY

3 0 4 8
PLAISIR

3 0 4 9
PALE RUBY

TIMELESS

KISSPROOF® LIPSTICK



6 4 2 0
PERFECT NUDE

6 4 2 1
BLOSSOM

6 4 2 2
BAZAAR

6 4 2 3
MUSE

6 4 2 4
ICONIC

6 4 2 5
BOLD RED

6 4 2 6
POP PINK

6 4 2 7
FIRST LADY



6 4 2 8
BRAVE RED

6 4 2 9
TRUE NAKED

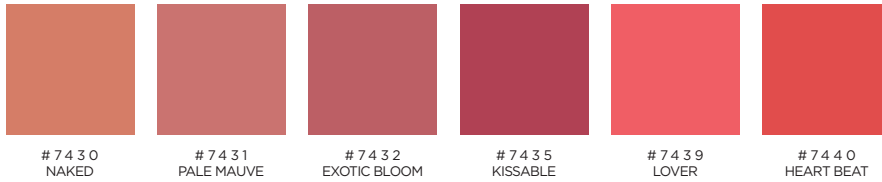
6 4 3 0
BLOOM

6 4 3 1
NOBLESSE

6 4 3 2
KNOCKOUT

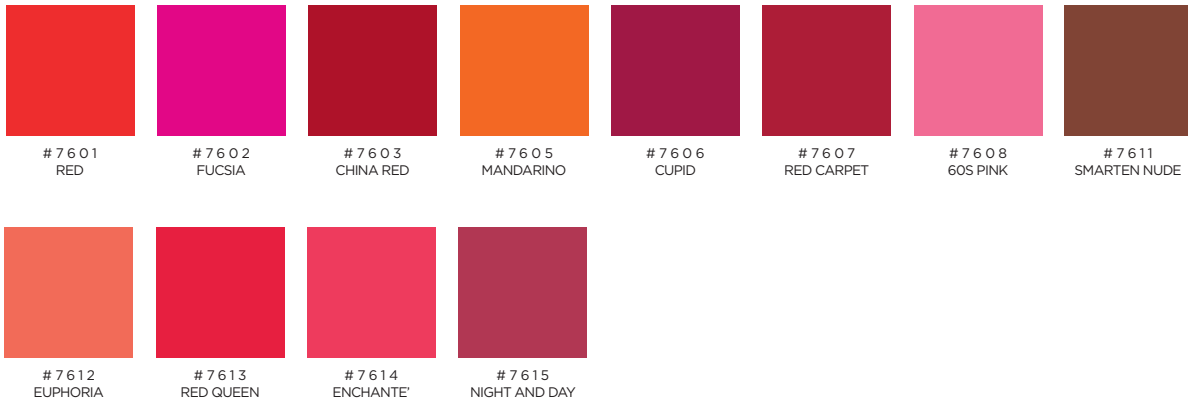
ABSOLUTE

BRIGHT SATIN LIPSTICK



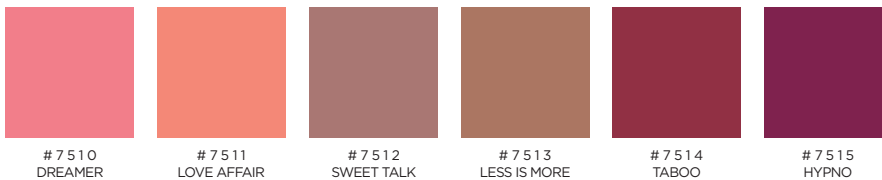
VOGUE

MATTE LIPSTICK



JAMAIS!

SHEER LIPSTICK



20100

CRAYON LIPSTICK

SHINING



#7263 SCARLETT #7264 FIRE #7267 INTIMACY #7268 VINTAGE PINK #7270 CHERRY #7271 LUST #7272 FUCSIA #7274 ORANGE



#7275 NATURELLE #7277 BLUSH #7279 TULIP RED #7284 DIVA #7286 CONFESS #7287 FANCY PINK #7288 VELVET ROSE #7289 PEONY



#7290 MODERN PINK #7291 CAYENNE #7292 PINKISH ORANGE #7293 RED HOT CHILI PEPPER #7294 ORCHID #7295 FLUSH #7296 ANTIQUE PINK #7297 DANGEROUS RED



#7298 LA FIESTA

MATTE



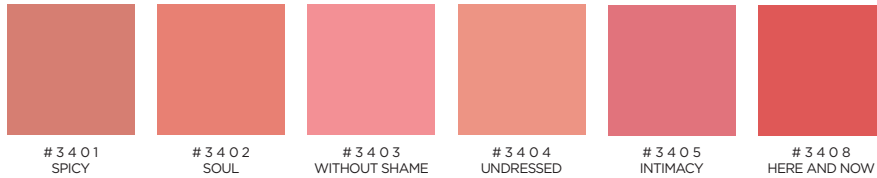
#7801 ALLURE #7802 BOUQUET #7803 PRELUDE #7804 ADORABLE #7806 CHARME #7807 SENSUEL #7808 AUDACE #7809 DYNAMIC RED (SCARLET)



#7810 INSOLENT #7811 CHIC #7812 BELLE EPOQUE #7813 MAGNIFIQUE #7814 DIVINE #7815 ENIGME #7897 BLACKOUT

20100

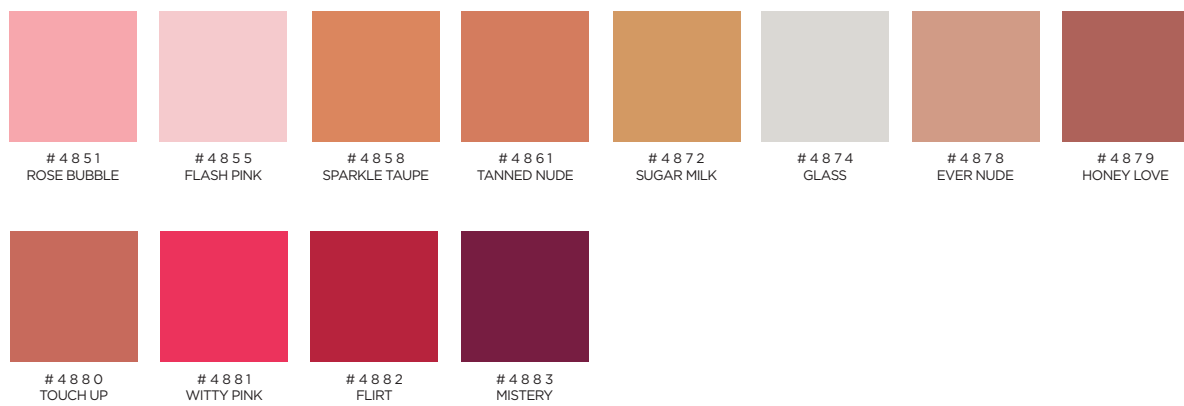
MAXIMATTE CRAYON LIPSTICK



SKIN

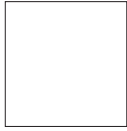
LIP GLOSS

BASIC LINE UP GENERAL TESTER DISPLAY



SILHOUETTE

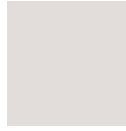
LIP LINER AND LIP TREATMENT



#6501
INVISIBLE

ACTIVE SPA

LIP BALM AND PRIMER



#1610
NEUTRAL

LIP OIL POTION

ADVANCED FLUID LIP TREATMENT



#1612

COLOR FIX EYE PRIMER

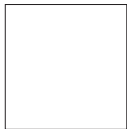
SMUDGEPROOF EYE SHADOW BASE



#1602

ONLY•ONE

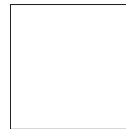
MIXING BASE



#1613

CREAM

GENTLE CREAM CLEANSER



#807

1 FLUID DELICATE

MICELLAR WATER



#814

2 PHASES

WATERPROOF MAKE UP REMOVER



#811

Colorless

1 FLUID DELICATE

MICELLAR WATER



#814

2 PHASES

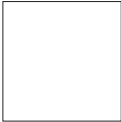
WATERPROOF MAKE UP REMOVER



#811

3 SUBLIME

MOROCCAN ARGAN OIL 100% PURE AND ORGANIC



#1605

4 NIGHT AND DAY

LASH & BROW GROWTH SERUM



#1603

SKIN CONTROL

MATTIFYING/BLURRING PRIMER



#1604
UNIVERSELLE

LUMINIZER
HIGHLIGHTER STICK



#1152
MOON

STROBING
HIGHLIGHTER PENCIL

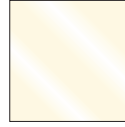


#1153
PINK

GLOW ON THE GO
HIGHLIGHTER PALETTE #1154



MIDNIGHT MOON



ETHEREAL



CASHMERE



DESIRE

ALL OVER
HIGHLIGHTING LOOSE POWDER



#8310
MOONBEAM



#8311
SUNBEAM

SOFT TOUCH
FLUID CONCEALER



#1205
IVORY SAND



#1206
NATURE BUFF



#1207
HONEY BEIGE

FLAWLESS
CREAMY CONCEALER



#1506
PORCELAIN



#1507
NUDE



#1508
COOL SAND



#1509
WARM NATURAL



#1510
AMBER



#1511
NATURAL TAN

CONCEAL-IT
STICK CONCEALER



#8801
IVORY



#8802
SAND



#8803
BEIGE



#8804
NATURAL



#8805
GINGER



#8806
CARAMEL

Face

CREAM FOUNDATION

FLUID FOUNDATION



#8617
FAIR IVORY

#8618
BEIGE NUDE

#8619
ALMOND

#8620
IVORY

#8621
HONEY

#8622
ESPRESSO

#8623
MACCHIATO

#8624
SAND



#8625
WARM SAND

#8629
GINGER

#8630
CARAMEL

#8631
COCOA

PERFECT SKIN

FOUNDATION STICK



#8720
NATURAL IVORY

#8721
NATURAL BEIGE

#8722
NATURAL ROSE

#8723
HONEY

#8724
GOLDEN

#8725
WARM CAPPUCCINO

LORD & BERRY

Face

LOOSE POWDER

FINISHING TOUCH

MATTE

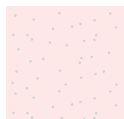


#8305
LINO

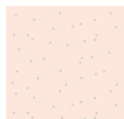


#8306
IVORY

STARDUST



#8307
WARM CREAM
(WITH PEARLS)



#8308
CAPPUCCINO
(WITH PEARLS)

PRESSED POWDER



#8105
NUTMEG



#8106
BUFF



#8107
BEIGE



#8108
IVORY



#8110
CREAM



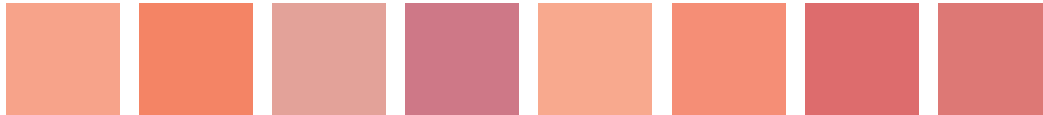
#8111
VANILLA



#8112
ALMOND

BLUSH

POWDER BLUSH



#8205
PEONY

#8206
PEACH

#8207
ROSE

#8208
PLUM

#8211
HONEY

#8212
SUNKISSED

#8213
CAMELIA

#8214
LOTUS



#8216
CINNAMON

BLUSHER

CREAM BLUSH



#8230
HONEY

#8231
CORAL

#8232
FUSION

#8233
SWEET PINK

#8234
DUSTY ROSE

#8235
ORCHID

SCULPT & CONTOUR

CREAM BRONZER



#8930
SUN KISS

#8931
SUN TAN

#8932
BISCUIT

#8933
AMBER MEDIUM

#8934
TAWNY

#8935
TANNED

BRONZER

POWDER BRONZER



#8901
SIENNA

#8902
BRICK

#8903
BISCOTTO

#8904
TOFFEE

#8905
SUNNY

#8906
GOLDEN

LORD & BERRY

ON STAGE

FLUID FOUNDATION



#8640
FAIR IVORY

#8641
IVORY

#8642
BEIGE NUDE

#8643
ALMOND

#8644
WARM SAND

#8646
HONEY

GRAN FINALE

SETTING LOOSE POWDER



#8301
TRANSLUCENT

#8302
BANANA

#8303
JUST PEACH

TOUCH UP

BLOTTING POWDER



#8120
TRANSLUCENT

#8121
BANANA

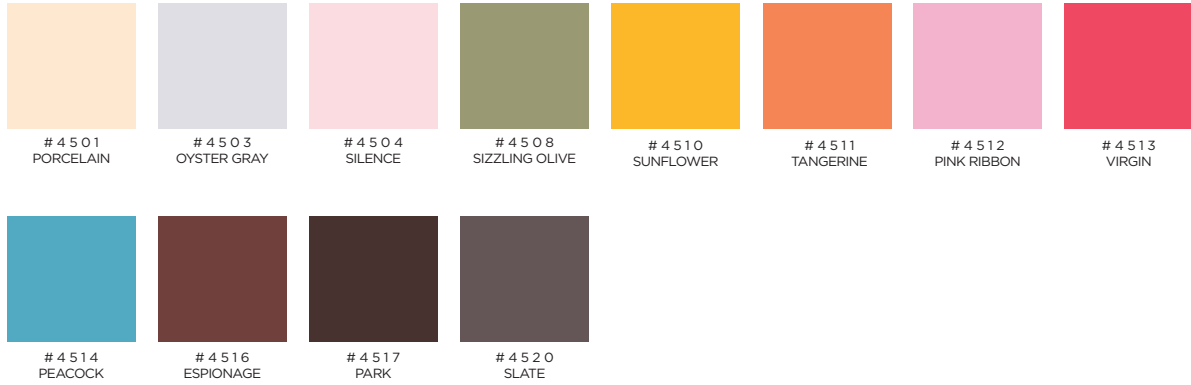
#8122
JUST PEACH

**LORD & BERRY ONLINE STORE
AND MAKE TO ORDER**

SETA

EYE SHADOW PRESSED POWDER

MATTE



SHIMMER



LORD & BERRY

Eyes

WET & DRY



4 5 7 5
DIAMOND ARE
FOREVER

4 5 7 6
DUSTY ROSE

4 5 7 7
PEONY

4 5 7 8
VOYAGE

4 5 7 9
HONEY HONEY

4 5 8 0
BRONZE PASSION

4 5 8 1
FLIRT

4 5 8 2
BURNT



4 5 8 3
COPPER

4 5 8 4
THUNDER

4 5 8 5
FRESH MINT

4 5 8 6
LUXURIOUS LIME

4 5 8 7
GREEN FAIRY

4 5 8 9
CHARACTER

4 5 9 1
DEEP OCEAN

4 5 9 2
STORM

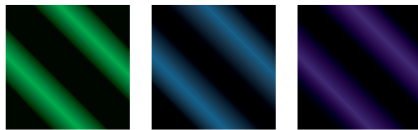


4 5 9 3
MATRIX

4 5 9 4
CHARCOAL

SUPREME

EYE PENCIL



1 1 0
SMART GREEN
(BLACK TURNING
GREEN)

1 1 1
SMART BLUE
(BLACK TURNING
BLUE)

1 1 2
SMART PURPLE
(BLACK TURNING
PURPLE)

SKIN

LIP GLOSS



#4850
STAR MAUVE



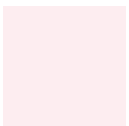
#4852
STARLIGHT



#4853
SWEET FLORIDA



#4854
ALLURE



#4856
COTTON CANDY



#4857
FLAMINGO



#4859
ENCHANTMENT



#4860
AMPERE



#4862
ROSSO VENEZIANO



#4863
MARASCHINO



#4864
CORAL



#4865
FUCSIA FROST



#4866
RICH EARTH



#4867
SACHER TORTE



#4868
ICE BRONZE



#4869
TANGERINE



#4870
BARE



#4871
COPPER RED



#4873
SKIN



#4875
ROMANTIC DREAM



#4876
COOKIE



#4877
TOFFEE



www.bluevisionfragranze.com
info@bluevisionfragranze.com